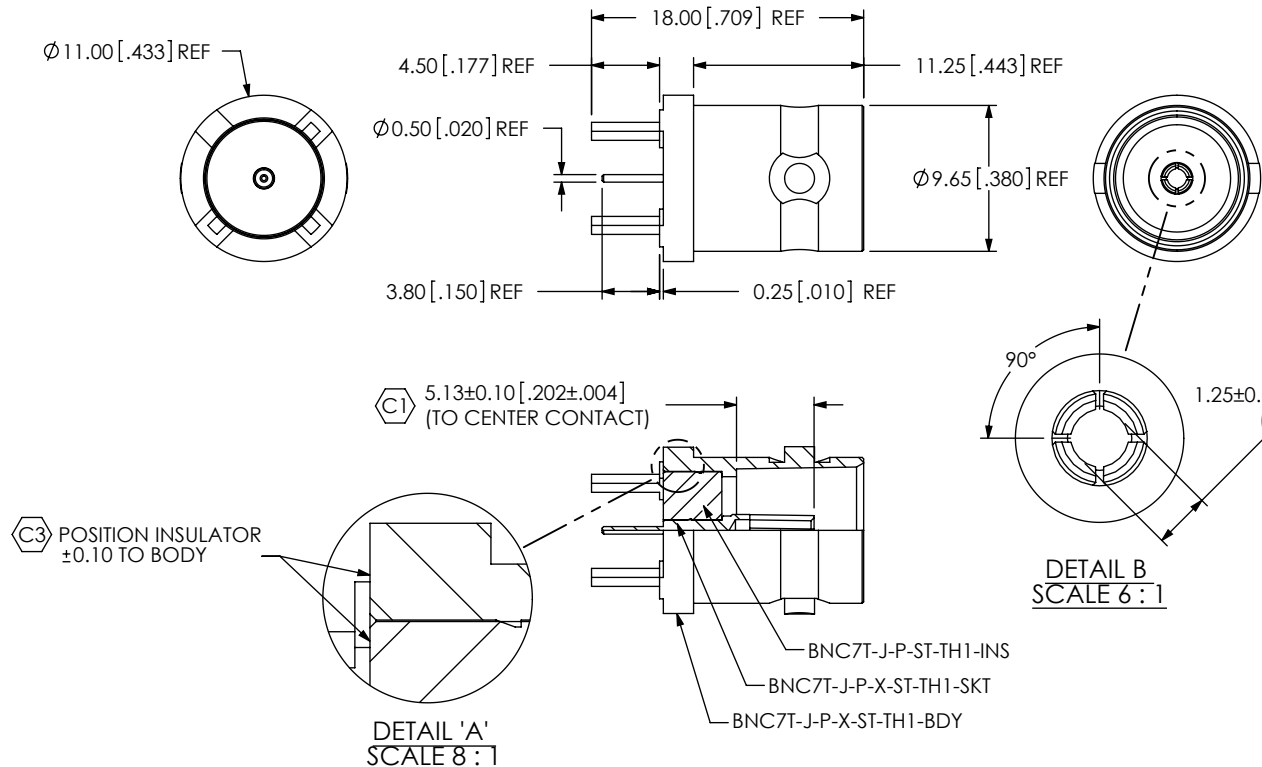


DESIGNED & DIMENSIONED
IN MILLIMETERS [INCHES]

BNC7T-J-P-XX-ST-TH1

GENDER
-J: JACK
TYPE
-P: PCB
TERMINATION
-TH1: THROUGH HOLE
ORIENTATION
-ST: STRAIGHT
PLATING SPECIFICATION
-HN: HEAVY GOLD/NICKEL (SEE NOTES 7 & 8)
(BNC7T-J-P-N-ST-TH1-BDY)
(BNC7T-J-P-ST-TH1-INS)
(BNC7T-J-P-H-ST-TH1-SKT)

DO NOT
SCALE FROM
THIS PRINT



- [E] -GN: GOLD/NICKEL (SEE NOTES 7 & 8)
(BNC7T-J-P-N-ST-TH1-BDY)
(BNC7T-J-P-ST-TH1-INS)
(BNC7T-J-P-G-ST-TH1-SKT)
- [E] -MN: GOLD/NICKEL (SEE NOTES 7, 8 & 9)
(BNC7T-J-P-N-ST-TH1-BDY)
(BNC7T-J-P-ST-TH1-INS)
(BNC7T-J-P-G-ST-TH1-SKT)

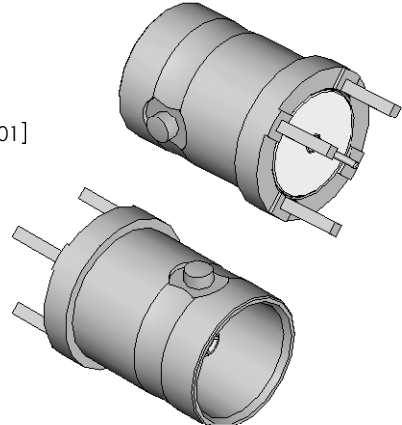
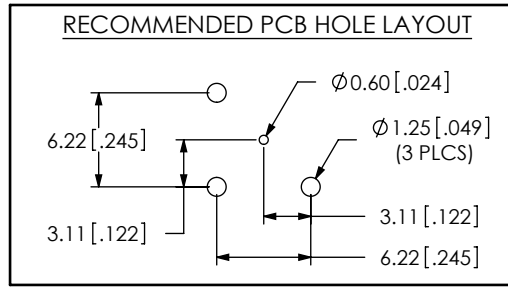


FIG.1
BNC7T-J-P-HN-ST-TH1 SHOWN



- NOTES:
1. [C] REPRESENTS A CRITICAL DIMENSION.
 2. PUSHOUT FORCE FOR CENTER CONTACT: 26.69 N [6.0 LB] MIN.
 3. NOTE DELETED.
 4. SEE CO-HD-WI-3040-M RF PACKAGING FOR PACKAGING INSTRUCTIONS.
 5. RoHS COMPLIANT.
 6. SEE PLATING STANDARD CO-PL-FRM-7001-M.
 7. COMPONENT PLATING DESIGNATIONS:
-H: 0.000030" MIN. GOLD OVER 0.000050" MIN. NICKEL.
-G: 0.000010" MIN. GOLD OVER 0.000050" MIN. NICKEL.
-N: 0.000100" MIN. NICKEL.
 8. ASSEMBLY PLATING DESIGNATIONS:
-HN: (CENTER CONTACT)-H
(OUTER CONTACT) -N
(REMAINING METAL PARTS) -N
-GN, -MN: (CENTER CONTACT)-G
(OUTER CONTACT) -N
(REMAINING METAL PARTS) -N
 9. FOR EXISTING CUSTOMERS ONLY.

**THIS PRODUCT MANUFACTURED
WITH LEAD-FREE PROCESSING**

F:\DWG\MISC\MKTG\BNC7T-J-P-XX-ST-TH1-MKT.SLDRW

UNLESS OTHERWISE SPECIFIED DIMENSIONS ARE IN MILLIMETERS [INCHES] TOLERANCES ARE: DECIMALS ANGLES .X: ±0.3 [.01] 2° .XX: ±0.13 [.005] .XXX: ±0.051 [.0020]	PROPRIETARY NOTE THIS DOCUMENT CONTAINS INFORMATION CONFIDENTIAL AND PROPRIETARY TO SAMTEC, INC. AND SHALL NOT BE REPRODUCED OR TRANSFERRED TO OTHER DOCUMENTS OR DISCLOSED TO OTHERS OR USED FOR ANY PURPOSE OTHER THAN THAT WHICH IT WAS OBTAINED WITHOUT THE EXPRESSED WRITTEN CONSENT OF SAMTEC, INC.	<p>520 PARK EAST BLVD, NEW ALBANY, IN 47150 PHONE: 812-944-6733 FAX: 812-948-5047 e-Mail: info@SAMTEC.com code: 55322</p>
MATERIAL: DO NOT SCALE DRAWING SHEET SCALE: 2:1 BODY: BRASS CONTACT: COPPER ALLOY DIELECTRIC: PTFE	DESCRIPTION: TRUE 75 OHM BNC STRAIGHT JACK FOR PCB DWG. NO. BNC7T-J-P-XX-ST-TH1 BY: G. HERMAN 04/21/2008 SHEET 1 OF 1	