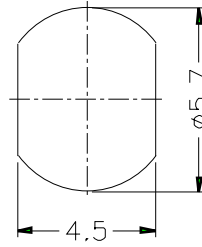


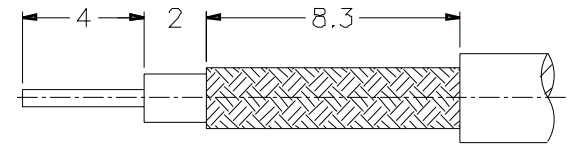
1 2 3 4 5 6 7 8

REVISIONS		
ISS	ZONE	DESCRIPTION\PER REQUEST\DATE

- CABLES: - NORTELL
 RA 750-304541
 - L910/39
 - TR-SP.125
 - L910/34
 - BT 3002
 - TR-SP.127
 - PT-R 0229/70
 - TZC 750 25



RECOMMENDED MOUNTING HOLE



RECOMMENDED CABLE STRIPPING DIM'S

F

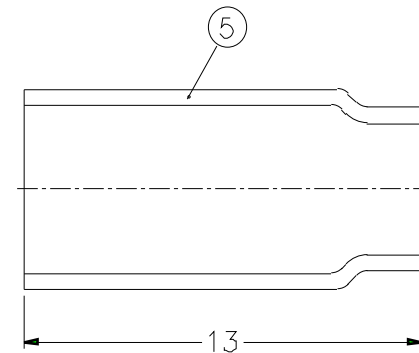
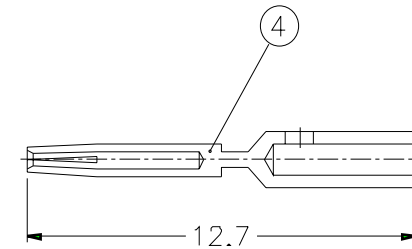
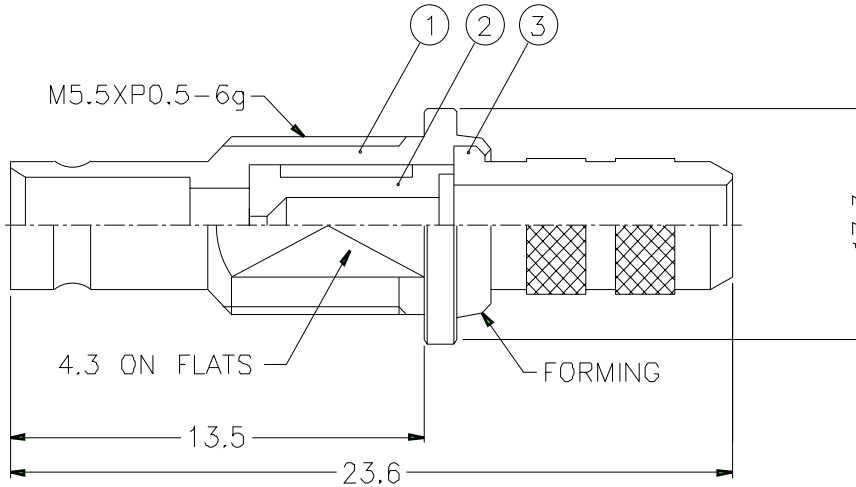
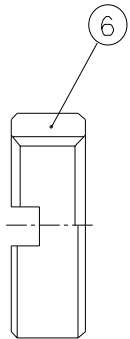
E

D

C

B

A



- FERRULE CRIMPING TOOLS P/N
 227-944 (M22520/5-01)
 227-1221-19B (M22520/5-19B) HEX: 5.41 L= 10.16
- INNER CONTACT CRIMPING TOOL P/N
 615717 (M22520/2-01) OR AFM8 ADJUST TO 5
 (CABLE BT3002: ADJUST TO 3)

DIMENSIONS ARE IN MILLIMETERS						PART NO. 1236421A1-E16A		Amphenol RF	
NO.	DESCRIPTION	MATERIAL	FINISH	Q'TY	DRAWING NO.	UNLESS OTHERWISE SPECIFIED TOLERANCES	APPROVED		
6	NUT	BRASS	NICKEL	1	123-JACK-SN	0.5-6 = ±0.2		04-10-02'	1.0/2.3 CRIMP JACK
5	FERRULE	COPPER	NICKEL	1	2A-167-34	6-30 = ±0.4			
4	CONTACT PIN	BEUC	GOLD	1	1236421D7-4-175/095	30-120 = ±0.6	CHECKED	04-10-02'	
3	BARREL	BRASS	NICKEL	1	BR00ABN04A	120-315 = ±1			
2	INSULATOR	PTFE	NATURAL	1	NSDDAHQD2A	315-1000 = ±1.6	DRAWN	04-10-02'	DRAWING NO. 106421ERA32MN7F
1	BODY	BRASS	GOLD	1	1236421D7-1	1000-2000 = ±2.4	JOYCE		ITEM NO. 106421ERA32MN7F
NO. DESCRIPTION MATERIAL FINISH Q'TY DRAWING NO.						SCALE 4/1	ISSUE A1	FILE NO. F:\ND\10\6421\ERA\32\7F\MN-A1	

1 2 3 4 5 6 7 8