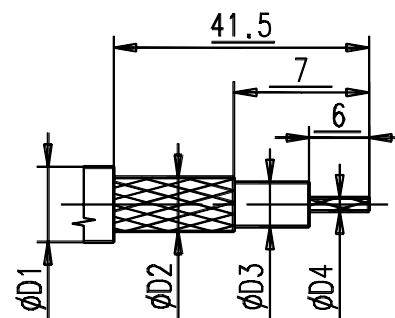


Innenleiter gegen Gehaeuse verdrehgesichert  $M > 15$  Ncm /  
hold torque between centerconductor and housing  $M > 15$  Ncm.

Einzelteil / Part	Werkstoff / Material	Oberflaeche / Surface
Gehaeuse / Housing	CuZn39 Pb3	Cu Ag 3-5 $\mu$ m
Innenleiter / Centre Contact	BO5	Cu Ag 5-8 $\mu$ m
Isolierteil / Insulator	PTFE	

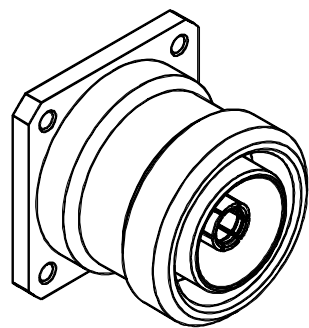
⑨ IM sensitive surface according to level 1 according to PA-3245

Kabelzuschnitt  
Stripping dimension



Fuer Kabel /  
For cable

Gr.	Type	$\phi D1$ max.	$\phi D2$ max.	$\phi D3$ max.	$\phi D4$ max.	$\phi D5$	$\phi D6$	Aussen Kontakt / Outer contact	Innen Kontakt / Inner contact
8	Habia Flexiform 401	7,20	6,40	5,30	1,60	6,45	8,50	solder	solder



M/scale1:1

Verpackung / packaging: 1010120  
Verpackungseinlage / packing insert: 1010086  
Stückzahl / quantity: 20

IMS CONNECTOR SYSTEMS		general tolerance ISO 2768 mH	scale: 2:1
		Assembly instruction: M 141 Stripping dimension:	
320/04	h Revised	02.11.04	IS
700/01	g Text hinzu	19.11.01	David generate
637/01	f Material geändert	24.10.01	Pichl checked
364/01	e Change material contact socket: M141 add.	05.06.01	RSc Norm
Design	d Change material contact socket	22.05.01	RSc 30017
Design	c Change acco. simu.	21.02.01	RSc
Design	b Material Questra → PTFE	08.02.01	RSc
Design	a Text addition	30.11.00	RSc
nr.	rev.	alteration	date name

**Chassiskabelbuchse**  
**Bulkhead cable jack**

3113.08.2418.08'

Rev. h