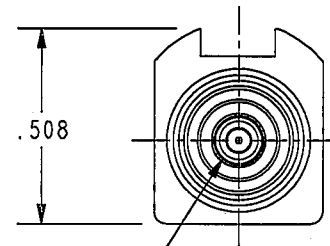
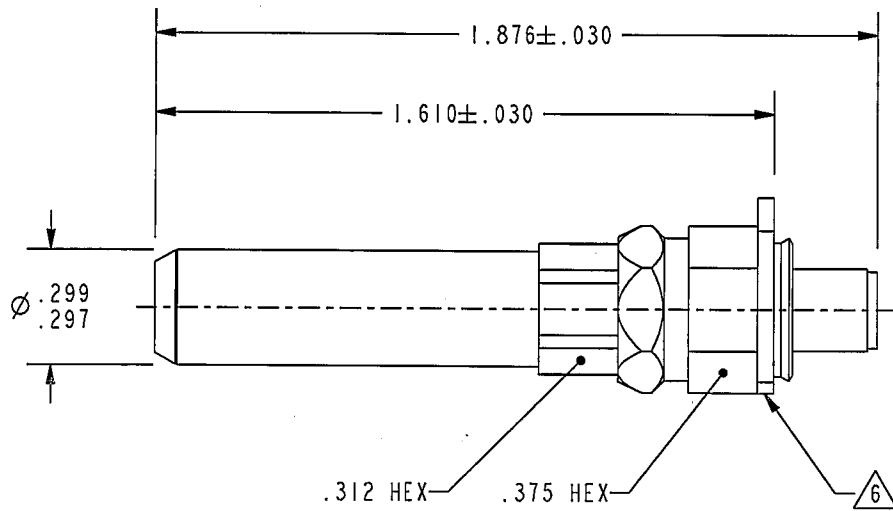


DASH NO	CABLE ACCOMMODATED <span style="border: 1px solid black; padding: 2px;">3</span>	A HEX
-1	LUCENT KSI9224L2	.178
-2	LUCENT 735A	
-3	MINI COAX WITH DOUBLE BRAID SHIELD AND JUMPER	
-4	TCC-75-3S TCC-75-3D	.213
-5	LUCENT 734A	.255
-6	COMM/SCOPE 0222	.178

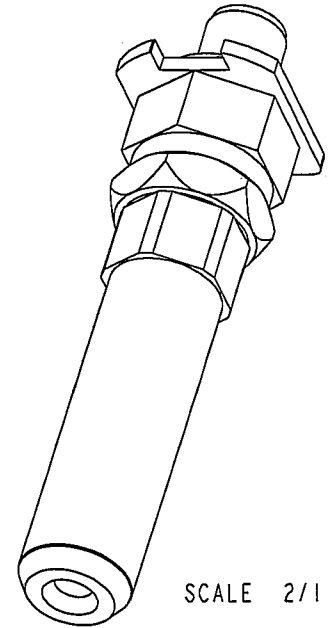
DATA CONTAINED IN THIS DOCUMENT IS PROPRIETARY TO TROMPETER ELECTRONICS INC. AND SHALL NOT BE DISCLOSED, COPIED OR USED FOR PROCUREMENT OR MANUFACTURE WITHOUT EXPRESS WRITTEN PERMISSION.

REVISIONS			
REV	DESCRIPTIONS	DATE	APPROVED
G	REVISED PER ECO 15496	6/17/04	WJ

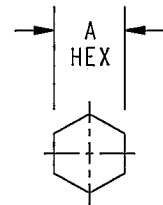
**RED INDICATES ORIGINAL**



CABLE ENTRY



SCALE 2/1



RECOMMENDED  
HEX CRIMP

-1 SHOWN

4. MATES WITH NUMBER 558A, 560A, AND 562A JACKS

3 SEE TABLE FOR CABLES ACCOMODATED

2. 75 OHM COAXIAL (AT&T 440D TYPE) MINIATURE TOOL CRIMP PATCH PLUG, IN STANDARD CRIMP DESIGN, GOLD FLASH PALLADIUM-NICKEL WITH ENTRY BUSHING

1. FINISH: TFS-1Z (GOLD FLASH PALLADIUM-NICKEL)

6 PLATE TO ROTATE FREELY AFTER WITHSTANDING AN AXIAL FORCE OF 25 POUNDS IN THE DIRECTION OF THE CABLE ENTRY

5. ASSEMBLE IAW TAI-200 EXCEPT INSTALL NUT ASSEMBLY OVER CABLE PRIOR TO TERMINATING CONNECTOR

INTERPRET DRAWING PER MIL-STD-100. DIMENSIONS ARE IN INCHES AND INCLUDE FINISH THICKNESS UNLESS OTHERWISE SPECIFIED.

TOL: UNLESS SPECIFIED.  
.XX ± .02  
.XXX ± .010  
ANGLE ± 1°

**TROMPETER**  
ELECTRONICS, INC.

DRN	L. M.	6-8-04	MATERIAL:	
CHK	T. A. A.	6-16-04	FINISH:	
QUAL. LIA.	WJ	6/14/04		
MANUF.	WJ	6/14/04		
APPROVED	WJ	6/14/04		

TITLE: PLIISC SPECIAL (LUCENT 440D EQUIV)			
SIZE	CAGE CODE	DRAWING NO.	REV.
A	14949	105-1649	G

NOTES: UNLESS OTHERWISE SPECIFIED.

105-1617	PROVE FILE NO. 105-1649	DO NOT SCALE DWG	SCALE	DATE	SHEET
NEXT ASSY			2/1	7-14-95	1C