

# **SLC-PN1 Series**

## **LC CONNECTOR PLUG**

( for LC-APC,  $\varnothing$  0.9 mm )

### **TECHNICAL SPECIFICATIONS**

**Seiko Instruments Inc.**

Network Components Business

8, Nakase 1-Chome

Mihama-ku, Chiba-shi, Chiba-ken

261-8507 JAPAN

Telephone: +81-43-211-1211

Facsimile: +81-43-211-8039

SLC-PN1 Series LC CONNECTOR PLUG ( for LC-APC,  $\varnothing$  0.9 mm )  
TECHNICAL SPECIFICATIONS

Document Number [ACD-25B6-01](#)

[ACD-25B6-01](#)      June 2002

Copyright 2002 by **Seiko Instruments Inc.**  
All right reserved.

The information contained herein shall not be reproduced or disclosed to any third party without the express written consent of **SII**.

The Specifications contained herein are subject to change without notice.

**SII** is a trademark of Seiko Instruments Inc.

Please address any questions, comments, and suggestions to:

**Seiko Instruments USA Inc.**

Electronics Components Division  
2990 West Lomita Boulevard  
Torrance, CA 90505, U.S.A.  
Phone:           +1-310-517-7780  
Facsimile:      +1-310-517-7792

**Seiko Instruments (H.K.) Ltd.**

Sales Department  
4th & 5th Floor, Wyler Center 2  
200 Tai Lin Pai Road, Kwai Chung  
N.T., Kowloon, Hong Kong  
Phone:           +852-2421-8611  
Facsimile:      +852-2480-5479

**Seiko Instruments Singapore pte. Ltd.**

Component Sales Department  
2, Marsiling Lane,  
Singapore, 739144, Singapore  
Phone:           +65-269-1370  
Facsimile:      +65-269-9729

**Seiko Instruments GmbH**

OFC Division  
Siemensstraße 9b  
D-63263 Neu-Isenburg, Germany  
Phone:           +49-6102-297-0  
Facsimile:      +49-6102-297-211

**Seiko Instruments Taiwan Inc.**

Sales Department  
4F, No.40, Sec. 2, Min Chuan E. Rd.,  
Taipei 104, Taiwan, R.O.C.  
Phone:           +886-2-2563-5001  
Facsimile:      +886-2-2521-9519

## TABLE OF CONTENTS

Section	Page
1 PROVISION	1
1.1 Application limit	1
2 PARTS NUMBER	1
3 GENERAL SPECIFICATIONS	2
3.1 Parts and Materials	2
3.2 Physical Dimensions	2
3.3 General Tolerances	2
4 PACKING	2

### Table

Table 1	Parts Number	1
Table 2-1	Parts and Materials	2
Table 2-2	Parts and Materials of Main Body	2
Table 3	General Tolerance	2

### Figure

Figure 1	SLC-PN1 Connector Plug	3
Figure 2	Main Body	4
Figure 3 to 4	Parts Dimensions	5





### 3 GENERAL SPECIFICATIONS

#### 3.1 Parts and Materials

Parts and the materials are shown in Table 2-1 and 2-2.

Table 2-1 Parts and Materials

No.	Part Name	Qty	Material	Notes
①	Main body	1	See Table 2-2	Sub-assembled
②	Hood	1	TPE	Green, UL94V-0
⑨	Cap	1	PP	White, UL94V-0

Table 2-2 Parts and Materials of Main Body

No.	Part Name	Qty	Material	Notes
③	Ferrule	1	Zirconia ceramics	-
④	Flange	1	Brass	Nickel plating
⑤	Tube	1	TPFE	Clear
⑥	Plug frame	1	PEI	Green, UL94V-0
⑦	Spring	1	Stainless steel	-
⑧	Stopper	1	PBT GF	Green, UL94V-0

#### 3.2 Physical Dimensions

Figure 1 shows the assembled state of SLC-PN1.

Figure 2 shows the Main body dimensions.

Figure 3 and 4 show the parts dimensions.

#### 3.3 General Tolerances

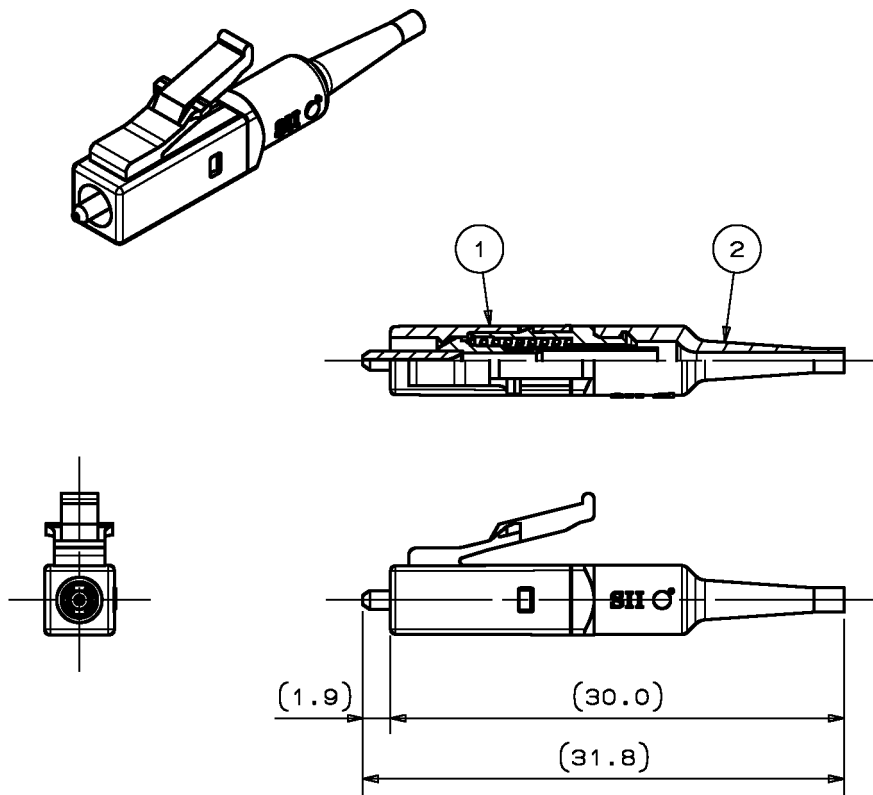
Permissible deviation in dimensions without tolerance indication is in accordance with JIS B 0405 class m, as shown in Table 3.

Table 3 General tolerance (JIS B 0405 class m)

Basic size step [mm]		Permissible deviation [mm]
Over	Under	
0.5	3	±0.1
3	6	±0.1
6	30	±0.2
30	120	±0.3

### 4 PACKING

The product is packed to prevent damage during shipment.

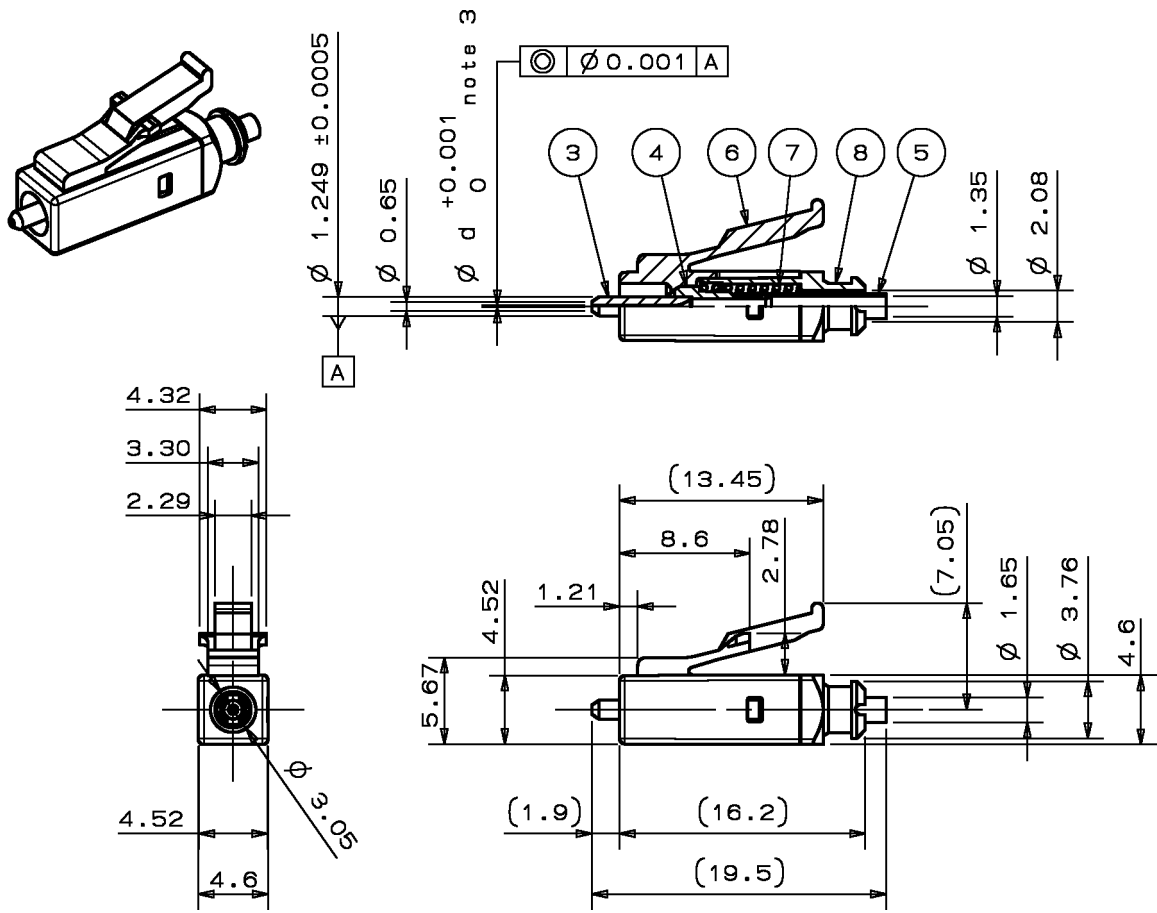


note 1: This drawing shows the tentatively assembled condition. In practice, the connector plug is not assembled like this.

note 2: This drawing does not include the cap.

Unit: mm

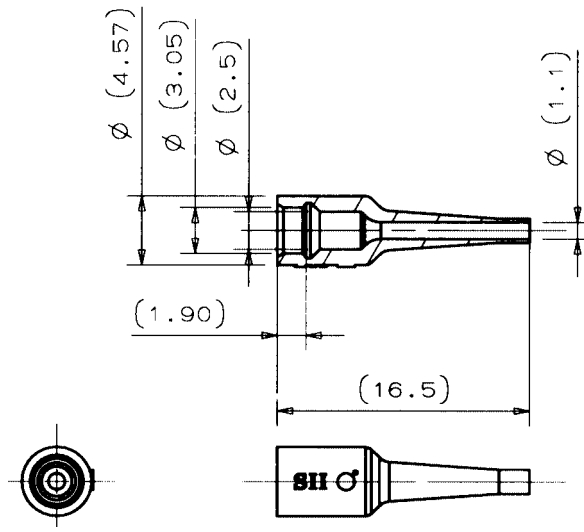
Figure 1 SLC-PN1 Connector Plug



note 3: Ferrule hole inner diameter (d) shown in Table 1.

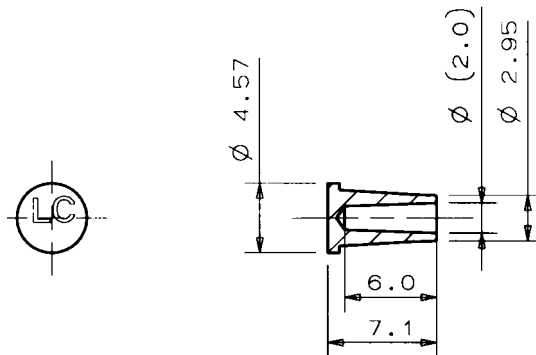
Unit: mm

Figure 2 ① Main Body



Unit: mm

Figure 3 ② Hood



Unit: mm

Figure 4 ⑨ Cap