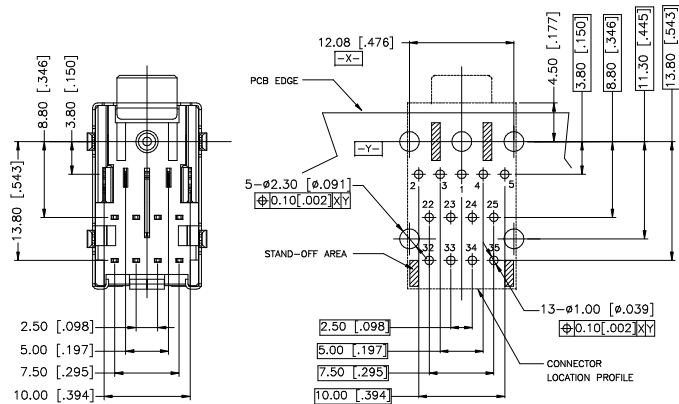


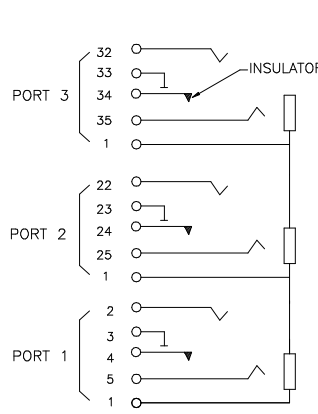
THE RECOMMENDED MATING PLUG(SCALE 2:1)
COMPLY WITH JIS C 6560, JC-35-P-3



RECOMMENDED PCB LAYOUT(COMPONENT SIDE VIEW)

DEFAULT TOLERANCE $\pm 0.05[\pm .002]$

RECOMMENDED PCB'S THICKNESS : $1.57\pm 0.05[.062\pm .002]$



CIRCUIT SCHEMATIC

SPECIFICATION:

1.ELECTRICAL CHARACTERISTICS:

- 1-1.CURRENT RATING: 1 AMPERE PER CONTACT.
- 1-2.DIELECTRIC WITHSTANDING VOLTAGE: 500VAC.
- 1-3.INSULATION RESISTANCE: 100MEG OHMS MIN.
- 1-4.CONTACT RESISTANCE: 50 MILLIOHMS MAX(INITIAL). 100 MILLIOHMS MAX.(AFTER LIFE TEST)

2.MECHANICAL CHARACTERISTICS:

- 2-1.MATING AND UNMATING FORCE: 0.4~3.0Kgf (INITIAL) 0.3~3.0Kgf (AFTER LIFE TEST).
- 2-2.DURABILITY: 1500 CYCLES.

3. ENVIRONMENTAL CHARACTERISTICS:

TEMPERATURE RANGE: -25°C~+85°C.

4. COLOR OF THE PORT SEE TABLE 1.

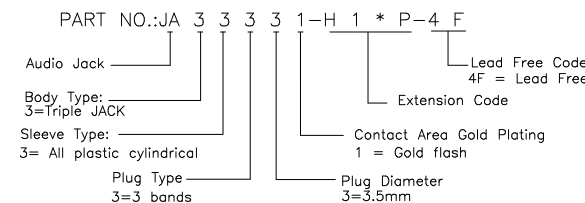
5. RoHS COMPLIANT

6. RECOMMEND SOLDER PROCESS: SEE PAGE 2/2

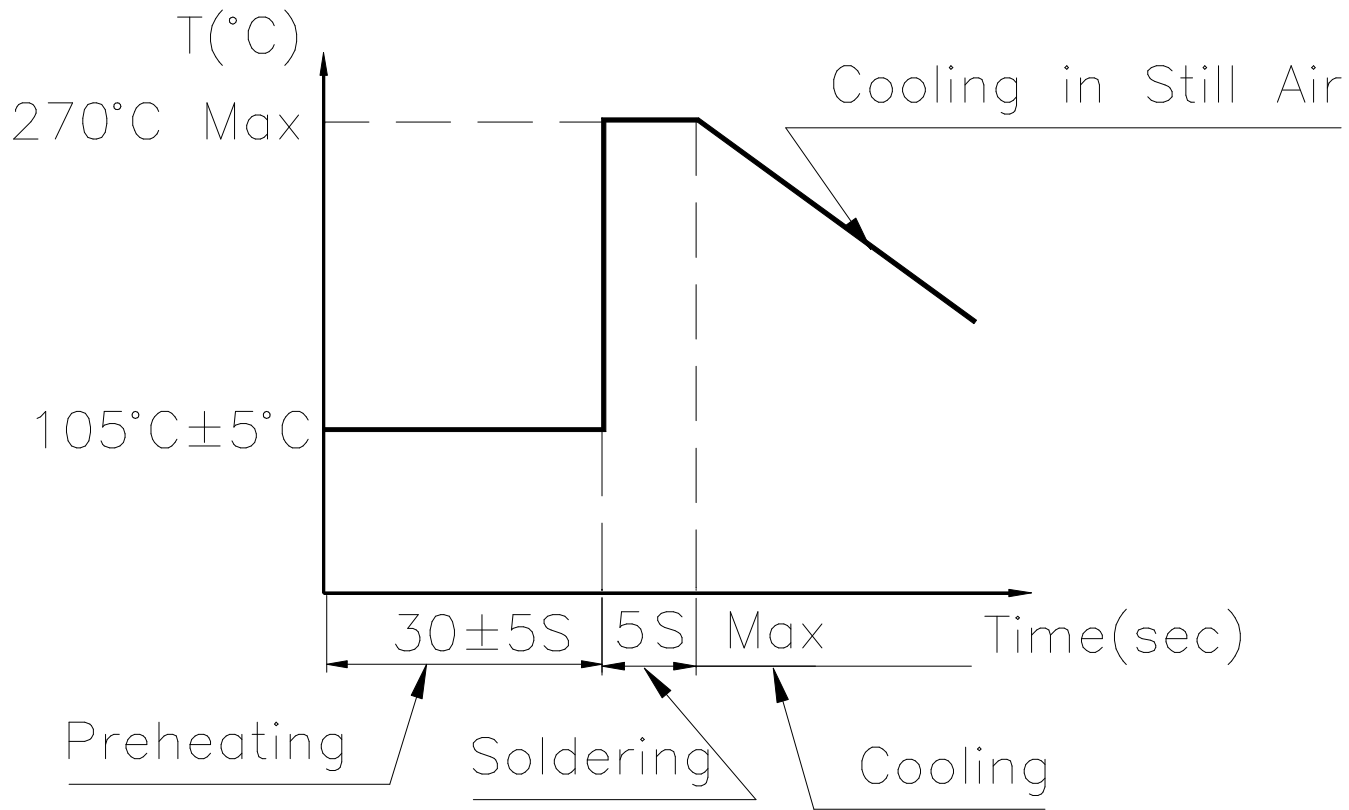
TABLE 1

P/N	PORT 1	PORT 2	PORT 3
JA33331-H11P-4F	PINK	LIME	LIGHT BLUE
JA33331-H14P-4F	GRAY	BLACK	ORANGE
JA33331-H15P-4F	ORANGE	BLACK	GRAY
JA33331-H13P-4F	LIME	LIGHT BLUE	PINK

REMARK:



ITEM	DESCRIPTION	Q'TY	MATERIAL	FINISH	REMARK
22	TAIL2#	1	COPPER ALLOY	NICKEL UNDERPLATING	
21	TAIL1#	1	COPPER ALLOY	TIN PLATING AT TAIL	
20	CONTACT #34	1	COPPER ALLOY	NICKEL UNDERPLATING	
19	CONTACT #24	1	(INSERT MOLDING PART THERMOPLASTIC UL 94V-0 BLACK)	GOLD PLATING SEE REMARK AT CONTACT AREA AND GOLD FLASH AT TAIL FOR CONTACT#4	
18	CONTACT #4	1			
17	CONTACT #35	1			
16	CONTACT #33	1			
15	CONTACT #32	1			
14	CONTACT #25	1			
13	CONTACT #23	1			
12	CONTACT #22	1			
11	CONTACT #5	1	COPPER ALLOY	NICKEL UNDERPLATING GOLD PLATING SEE REMARK AT CONTACT AREA AND TIN PLATING AT TAIL FOR CONTACT #1, GOLD FLASH AT TAIL FOR CONTACT #2,#3,#5	
10	CONTACT #3	1			
9	CONTACT #2	1			
8	CONTACT #1	1			
7	METAL SHIELD	1	STEEL ALLOY	NICKEL UNDERPLATING TIN PLATING OVERALL	
6	INSERT	2		MOLDED COLOR: BLACK	
5	RING	1		MOLDED COLOR: SEE TABLE 1	
4	RING	1	THERMOPLASTIC UL 94V-0	MOLDED COLOR: SEE TABLE 1	
3	RING	1		MOLDED COLOR: SEE TABLE 1	
2	HOUSING	1		MOLDED COLOR: BLACK	
1	SPACER	1	HIGH TEMPERATURE THERMOPLASTIC UL 94V-0	MOLDED COLOR: BLACK	
ITEM DESCRIPTION		Q'TY	MATERIAL	FINISH	REMARK
X.±	X°.±		UNITS mm[inch]	NAME(INTENDED USE)	FOXCONN HON HAI PRECISION IND. CO.,LTD. TAIPEI, TAIWAN, R.O.C.
.X± 0.3[.012]	.X°.±		MAT'L	CUSTOMER	
.XX± 0.25[.010]	.XX°.±		N/A	PART NO.(INTENDED USE)	TITLE: ø3.50 TRIPLE HD AUDIO JACK
.XXX±	.XXX°.±		FINISH	JA33331-H1*P-4F	APPD: Corel Zhu 2/5'09
THESE DRAWINGS AND SPECIFICATIONS ARE THE PROPERTY OF HON HAI PRECISION IND. CO., LTD. AND SHALL NOT BE REPRODUCED, COPIED OR USED IN ANY MANNER WITHOUT THE PRIOR WRITTEN CONSENT OF HON HAI PRECISION IND. CO., LTD.			Q'TY	N/A	CHKD: Sean Han 2/5'09
					DR: Helen Xue 2/5'09
					DWG NO.: 305-0000-1570
					SCALE SHEET REV. 1:1 1/2 D



WAVE SOLDERING THERMAL PROFILE

X.±	X°.±	UNITS	NAME(INTENDED USE)	FOXCONN HON HAI PRECISION IND. CO.,LTD. TAIPEI, TAIWAN, R.O.C.						
.X±	.X°.±	MAT'L	CUSTOMER							
.XX±	.XX°.±	N/A	PART NO.(INTENDED USE)	TITLE: ø3.50 TRIPLE HD AUDIO JACK						
.XXX±	.XXX°.±	FINISH	JA33331-H1*P-4F	DWG NO.: 305-0000-1570						
<small>THESE DRAWINGS AND SPECIFICATIONS ARE THE PROPERTY OF HON HAI PRECISION IND. CO., LTD. AND SHALL NOT BE REPRODUCED, COPIED OR USED IN ANY MANNER WITHOUT THE PRIOR WRITTEN CONSENT OF HON HAI PRECISION IND. CO., LTD.</small>		N/A	APPD: Corel Zhu 2/5'09	<table border="1"> <tr> <td>SCALE</td> <td>SHEET</td> <td>REV.</td> </tr> <tr> <td>1:1</td> <td>2/2</td> <td>D</td> </tr> </table>	SCALE	SHEET	REV.	1:1	2/2	D
		SCALE	SHEET		REV.					
		1:1	2/2		D					
Q'TY	CHKD: Sean Han 2/5'09									
N/A	DR: Helen Xue 2/5'09									