

# Customer Information Sheet

DRAWING No.: H05-730XX91

SHEET 2 OF 2 IF IN DOUBT - ASK

©

NOT TO SCALE

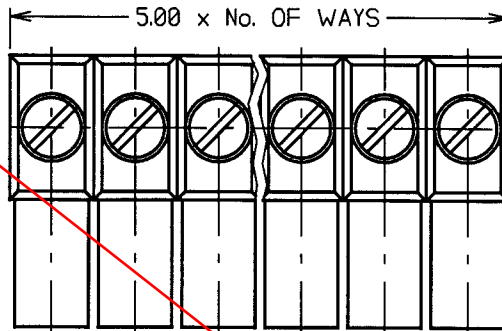
THIRD ANGLE PROJECTION

ALL DIMENSIONS IN mm

**NOTES:**

1. TO BE USED MATED VERTICALLY OR HORIZONTALLY WITH MALE PCB BLOCK H05-731XX91 (SEE DIAGRAM).
2. SUITABLE FOR WIRE UP TO 4mm<sup>2</sup> AREA - RECOMMENDED FOR 14 TO 18 AWG.
3. CAN BE CUT TO LENGTH LENGTH REQUIRED.

**OBSOLETE**



**SPECIFICATIONS:**

**MATERIALS:**

- MOULDING = FLAME RETARDANT POLYCARBONATE UL94V-0
- TERMINAL = BRASS
- RISING CLAMP = STEEL
- CAPTIVE SCREW = STEEL

**FINISH:**

- TERMINALS = 5µ TIN OVER NICKEL
- RISING CLAMP = ZINC
- CAPTIVE SCREW = 7µ ZINC, COLOUR PASSIVATE

**ELECTRICAL:**

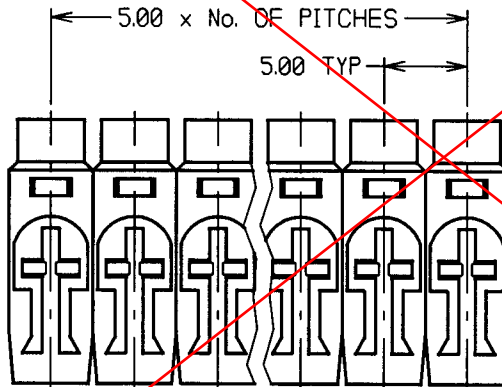
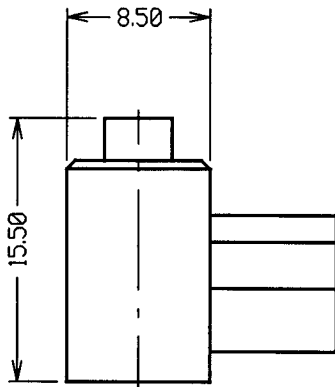
- CURRENT RATING = 16A
- VOLTAGE RATING = 380V
- DIELECTRIC STRENGTH = 5KV MIN
- INSULATION RESISTANCE = 40 MEGOHM MIN

**MECHANICAL:**

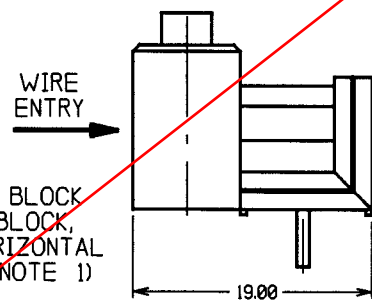
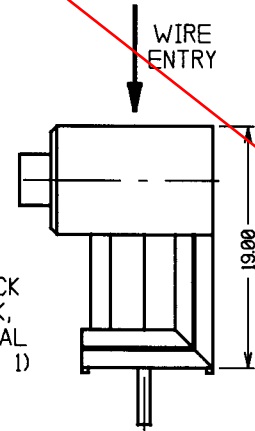
- TORQUE OF SCREW = 4Nm

**ENVIRONMENTAL:**

- TEMPERATURE RANGE = -20°C TO +125°C
- SHORT TERM TEMPERATURE = 160°C



ORDER CODE:  
**H05-730XX91**  
No. OF WAYS   
01 - 36



FEMALE TERMINAL BLOCK WITH MALE PCB BLOCK, MATED TO GIVE VERTICAL ORIENTATION (SEE NOTE 1)

FEMALE TERMINAL BLOCK WITH MALE PCB BLOCK, MATED TO GIVE HORIZONTAL ORIENTATION (SEE NOTE 1)

|               |                    |      |
|---------------|--------------------|------|
| 2             | 15.12.98           | 4683 |
| ISS.          | DATE               | C/N  |
| APPROVED:     | <i>[Signature]</i> |      |
| CHECKED:      | <i>[Signature]</i> |      |
| DRAWN:        | W. J. BOURNE       |      |
| CUSTOMER REF. |                    |      |
| ASSEMBLY DRG: |                    |      |

**HARWIN**

**TOLERANCES**

- X. - ±1mm
- X.X - ±0.25mm
- X.XX - ±0.10mm
- X.XXX - ±0.01mm
- ANGLES - ±1°
- UNLESS STATED

**MATERIAL:**

SEE ABOVE

**FINISH:**

SEE ABOVE

**S/AREA:**

mm<sup>2</sup>

**TITLE:** 5mm PITCH FEMALE RISING CLAMP TERMINAL BLOCK (MODULAR)

**DRAWING NUMBER:**

**H05-730XX91**

SHT 2 OF 2

HARWIN INC  
U.S.A.

TEL: (812) 285 0055  
FAX: (812) 285 0056

HARWIN PLC  
U.K.

TEL: 01705 370451  
FAX: 01705 314590

HARWIN PTE  
SINGAPORE

TEL: 65 7794909  
FAX: 65 7793868