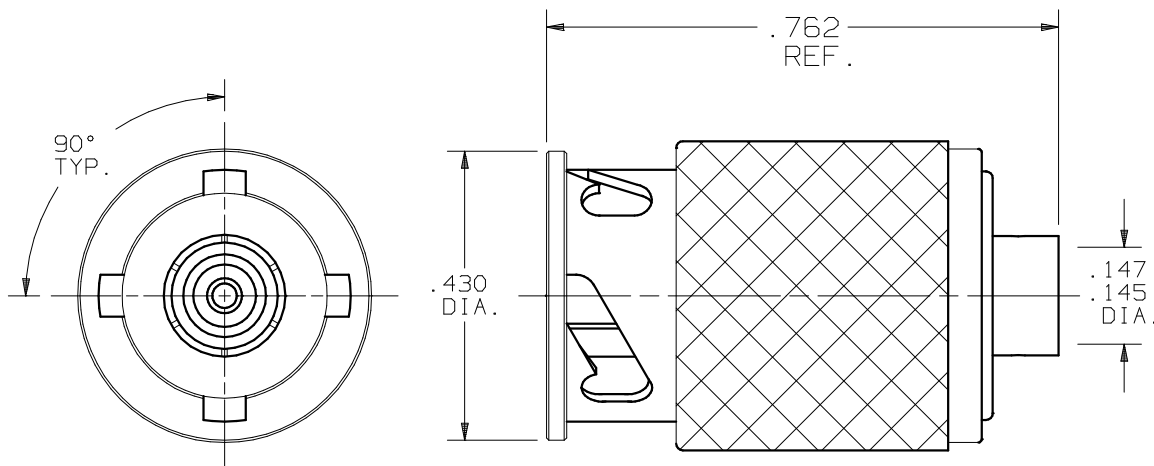


# PRODUCT DATA DRAWING

CAD  
GENERATED  
DRAWING

DCN  
CONTROLLED  
DOCUMENT

DWG. NO.  
SF8704-6001



**MATERIALS:**

BODY,  
COUPLING NUT &  
WASHERS: STAINLESS STEEL PER AMS-5640,  
UNS S30300 (TYPE 1), COND. A

INSULATOR: TEFLON PER ASTM-D-1457

CONTACTS &  
LOCK RING: BERYLLIUM COPPER PER ASTM-B196  
COND. TD04, ALLOY UNS-C17300

GASKETS: SILICONE RUBBER PER ZZ-R-765,  
CLASS IIB, GRADE 50/60

SPRING: STAINLESS STEEL 17-7 PH.

**FINISHES:**

COUPLING NUT,  
WASHERS &  
SPRING: PASSIVATE PER QQ-P-35C, TYPE II

BODY &  
CONTACTS: GOLD PER MIL-G-45204, TYPE I,  
GRADE C, CLASS 0 OVER NICKEL  
PER QQ-N-290, CLASS 2

**ELECTRICAL:**

IMPEDANCE: 50 OHMS  
FREQ. RANGE: DC TO 12.4 GHz  
D.W.V.: 1000 VRMS MIN.  
INSUL. RES.: 5,000 MEGOHMS

SYM.	DESCRIPTION	DATE	APPR.	UNLESS OTHERWISE SPECIFIED:	DIMENSIONS ARE IN INCHES			<i>SV Microwave, Inc.</i> 2400 Centrepark West Drive, Suite 100 West Palm Beach, FL 33409
				1) ALL DIMENSIONS ARE AFTER PLATING.	TOLERANCES:			
-	REL. NRN 26135	05/00	STW	2) BREAK CORNERS & EDGES .005 R. MAX.	DECIMALS	FRACTIONAL	ANGULAR	TITLE: ZMA PLUG (90° TYP.) FOR .141 S.R. CABLE
A	REV. DCN 27039	05/01	STW	3) CHAM. 1st & LAST THDS.	.X ±.030		X° ±1°0'	
B	REV. DCN 28701	08/02	STW	4) SURFACE ROUGHNESS 63 J MIL-STD-10.	.XX ±.015	±1/64	X°X' ±15'	DWG. NO. SF8704-6001
				5) DIAS. ON COMMON CENTERS TO BE CONCENTRIC WITHIN .005 T.I.R.	MATERIAL: PER BOM			
				6) REMOVE ALL BURRS.	FINISH: PER BOM			
				DRAWN: VMJ 5/22/00	AREA: N/A			
				CHECKED: STW 5/24/00	SIZE	CAGE NO.	SCALE	
				APPROVED: STW 5/24/00	A	95077	3.5X	