
2SC2512

Silicon NPN Triple Diffused

HITACHI

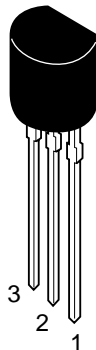
ADE-208-1066 (Z)
1st. Edition
Mar. 2001

Application

- VHF Amplifier
- VHF TV Tuner, Mixer

Outline

TO-92 (2)



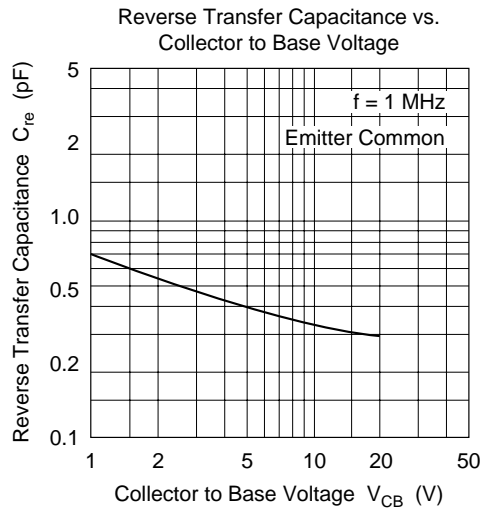
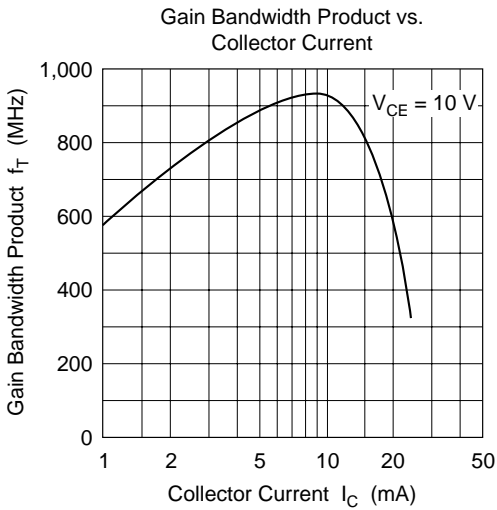
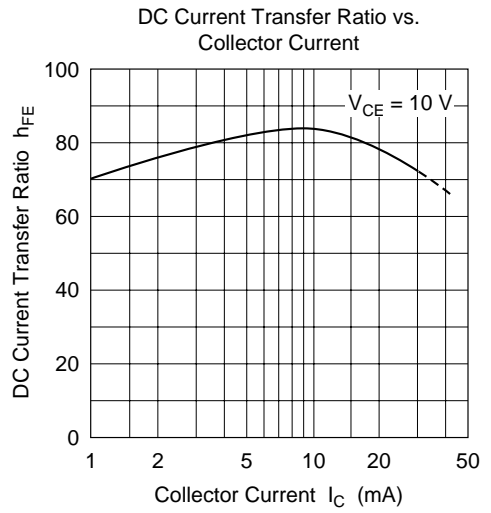
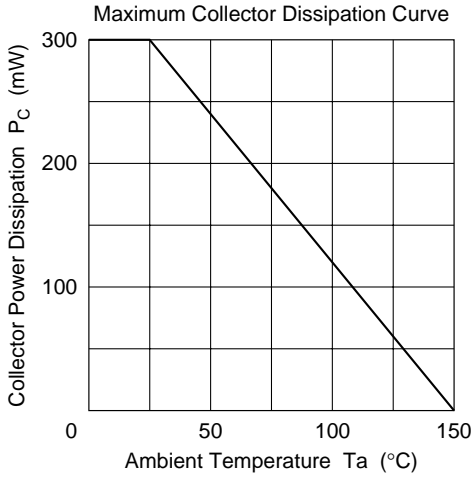
1. Base
2. Emitter
3. Collector

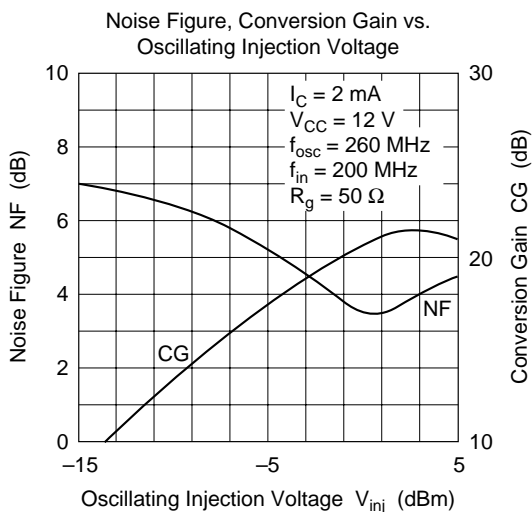
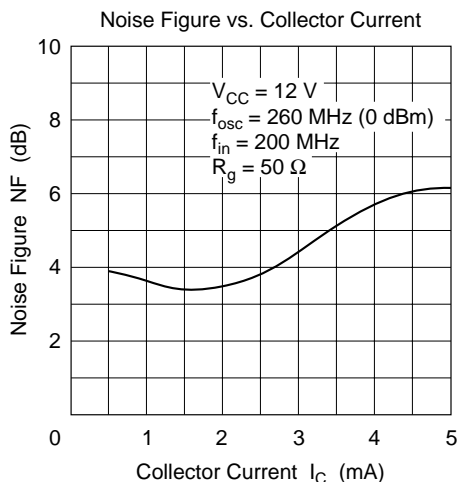
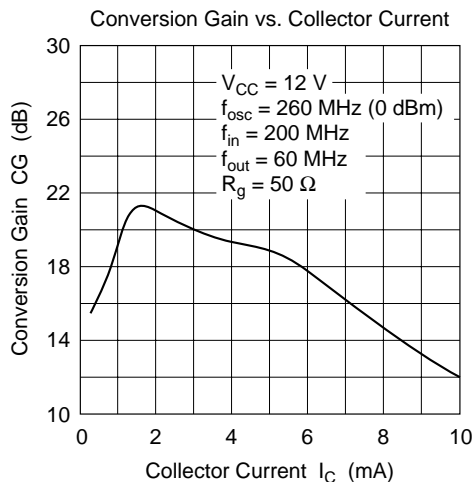
Absolute Maximum Ratings (Ta = 25°C)

Item	Symbol	Ratings	Unit
Collector to base voltage	V_{CBO}	30	V
Collector to emitter voltage	V_{CEO}	20	V
Emitter to base voltage	V_{EBO}	3	V
Collector current	I_C	50	mA
Collector power dissipation	P_C	300	mW
Junction temperature	T_j	150	°C
Storage temperature	T_{stg}	-55 to +150	°C

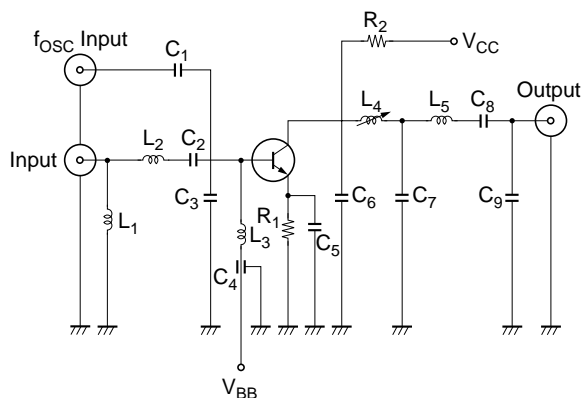
Electrical Characteristics (Ta = 25°C)

Item	Symbol	Min	Typ	Max	Unit	Test conditions
Collector to base breakdown voltage	$V_{(BR)CBO}$	30	—	—	V	$I_C = 10 \mu A, I_E = 0$
Collector to emitter breakdown voltage	$V_{(BR)CEO}$	20	—	—	V	$I_C = 1 \text{ mA}, R_{BE} = \infty$
Emitter to base breakdown voltage	$V_{(BR)EBO}$	3	—	—	V	$I_E = 10 \mu A, I_C = 0$
Collector cutoff current	I_{CBO}	—	—	0.5	μA	$V_{CB} = 10 \text{ V}, I_E = 0$
Collector to emitter saturation voltage	$V_{CE(sat)}$	—	—	1	V	$I_C = 20 \text{ mA}, I_B = 4 \text{ mA}$
DC current transfer ratio	h_{FE}	30	—	—		$V_{CE} = 10 \text{ V}, I_C = 10 \text{ mA}$
Reverse transfer capacitance	C_{re}	—	0.35	0.45	pF	$V_{CB} = 10 \text{ V}$, Emitter common, $f = 1 \text{ MHz}$
Gain bandwidth product	f_T	600	900	—	MHz	$V_{CE} = 10 \text{ V}, I_C = 10 \text{ mA}$
Base time constant	$r_{bb} \cdot C_C$	—	—	20	ps	$V_{CB} = 10 \text{ V}, I_C = 5 \text{ mA}, f = 31.8 \text{ MHz}$
Conversion gain	CG	16	20	—	dB	$V_{CC} = 12 \text{ V}, I_C = 2 \text{ mA}, f_{in} = 200 \text{ MHz}, f_{OSC} = 260 \text{ MHz}, f_{out} = 60 \text{ MHz}$
Noise figure	NF	—	3.8	5.5	dB	$V_{CC} = 12 \text{ V}, I_C = 2 \text{ mA}, f_{OSC} = 260 \text{ MHz}, R_g = 50 \Omega, f_{in} = 200 \text{ MHz}$





Conversion Gain, Noise Figure Test Circuit



- R_1 : 330 Ω (1/4 W)
 R_2 : 560 Ω (1/4 W)
 L_1 : ϕ 0.8 mm Copper wire with Enamel 8 Turns
 inside dia ϕ 3 mm
 L_2 : ϕ 0.8 mm Copper wire with Enamel 5 Turns
 inside dia ϕ 3 mm
 L_3 : ϕ 0.5 mm Copper wire with Enamel 3.5 Turns
 inside dia ϕ 3 mm
 L_4 : Outside dia ϕ 5 mm used Ferrite Core, ϕ 0.2 mm
 Copper wire with Enamel 6.5 Turns
 L_5 : ϕ 0.2 mm Copper wire with Enamel 13 Turns
 inside dia ϕ 5 mm

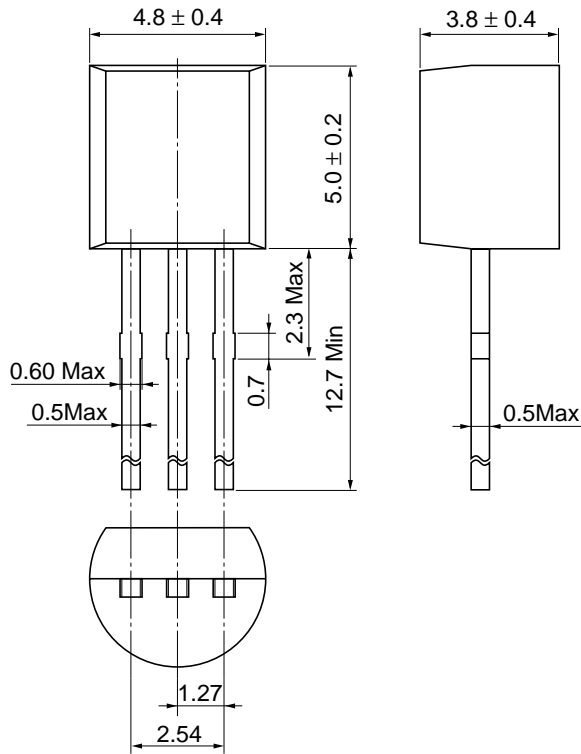
Parts Specification

- C_1 : 1.5 pF
 C_2 : 57 pF
 C_3 : 17 pF
 C_4 : 1000 pF
 C_5 : 2200 pF
 C_6 : 22 pF
 C_7 : 80 pF
 C_8 : 18 pF
 C_9 : 20 pF

Package Dimensions

As of January, 2001

Unit: mm



Hitachi Code	TO-92 (2)
JEDEC	Conforms
EIAJ	Conforms
Mass (reference value)	0.25 g

Cautions

1. Hitachi neither warrants nor grants licenses of any rights of Hitachi's or any third party's patent, copyright, trademark, or other intellectual property rights for information contained in this document. Hitachi bears no responsibility for problems that may arise with third party's rights, including intellectual property rights, in connection with use of the information contained in this document.
2. Products and product specifications may be subject to change without notice. Confirm that you have received the latest product standards or specifications before final design, purchase or use.
3. Hitachi makes every attempt to ensure that its products are of high quality and reliability. However, contact Hitachi's sales office before using the product in an application that demands especially high quality and reliability or where its failure or malfunction may directly threaten human life or cause risk of bodily injury, such as aerospace, aeronautics, nuclear power, combustion control, transportation, traffic, safety equipment or medical equipment for life support.
4. Design your application so that the product is used within the ranges guaranteed by Hitachi particularly for maximum rating, operating supply voltage range, heat radiation characteristics, installation conditions and other characteristics. Hitachi bears no responsibility for failure or damage when used beyond the guaranteed ranges. Even within the guaranteed ranges, consider normally foreseeable failure rates or failure modes in semiconductor devices and employ systemic measures such as fail-safes, so that the equipment incorporating Hitachi product does not cause bodily injury, fire or other consequential damage due to operation of the Hitachi product.
5. This product is not designed to be radiation resistant.
6. No one is permitted to reproduce or duplicate, in any form, the whole or part of this document without written approval from Hitachi.
7. Contact Hitachi's sales office for any questions regarding this document or Hitachi semiconductor products.

HITACHI

Hitachi, Ltd.

Semiconductor & Integrated Circuits.
Nippon Bldg., 2-6-2, Ohte-machi, Chiyoda-ku, Tokyo 100-0004, Japan
Tel: Tokyo (03) 3270-2111 Fax: (03) 3270-5109

URL	NorthAmerica	: http://semiconductor.hitachi.com/
	Europe	: http://www.hitachi-eu.com/hel/ecg
	Asia	: http://sicapac.hitachi-asia.com
	Japan	: http://www.hitachi.co.jp/Sicd/indx.htm

For further information write to:

Hitachi Semiconductor
(America) Inc.
179 East Tasman Drive,
San Jose, CA 95134
Tel: <1> (408) 433-1990
Fax: <1> (408) 433-0223

Hitachi Europe GmbH
Electronic Components Group
Dornacher Straße 3
D-85622 Feldkirchen, Munich
Germany
Tel: <49> (89) 9 9180-0
Fax: <49> (89) 9 29 30 00

Hitachi Europe Ltd.
Electronic Components Group.
Whitebrook Park
Lower Cookham Road
Maidenhead
Berkshire SL6 8YA, United Kingdom
Tel: <44> (1628) 585000
Fax: <44> (1628) 585160

Hitachi Asia Ltd.
Hitachi Tower
16 Collyer Quay #20-00,
Singapore 049318
Tel: <65>-538-6533/538-8577
Fax: <65>-538-6933/538-3877
URL: <http://www.hitachi.com.sg>

Hitachi Asia Ltd.
(Taipei Branch Office)
4/F, No. 167, Tun Hwa North Road,
Hung-Kuo Building,
Taipei (105), Taiwan
Tel: <886>-(2)-2718-3666
Fax: <886>-(2)-2718-8180
Telex: 23222 HAS-TP
URL: <http://www.hitachi.com.tw>

Hitachi Asia (Hong Kong) Ltd.
Group III (Electronic Components)
7/F., North Tower,
World Finance Centre,
Harbour City, Canton Road
Tsim Sha Tsui, Kowloon,
Hong Kong
Tel: <852>-(2)-735-9218
Fax: <852>-(2)-730-0281
URL: <http://www.hitachi.com.hk>

Copyright © Hitachi, Ltd., 2000. All rights reserved. Printed in Japan.
Colophon 2.0