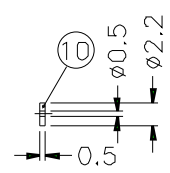
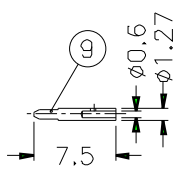
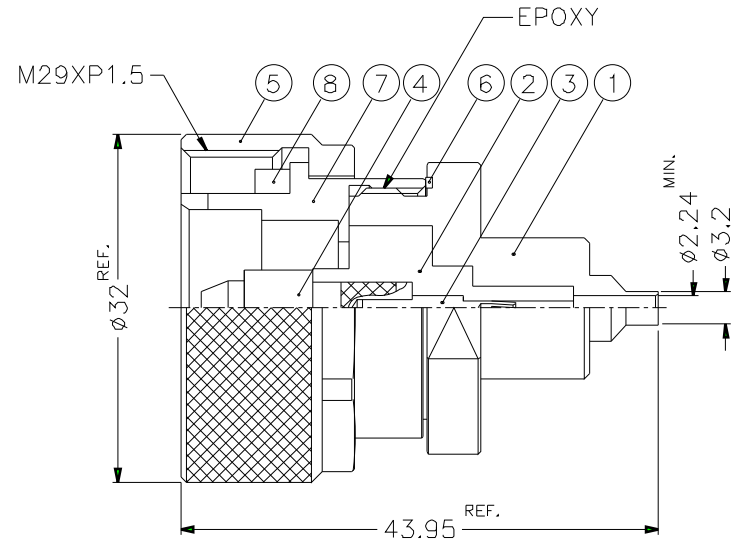


		1		2		3		4		5		6		7		8	
REVISIONS																	
ISS	ZONE	DESCRIPTION\PER REQUEST\DATE															



10	INSULATOR	NOTE 5	NATURAL	1	SMA1181A2-5T-50
9	CONTACT PIN	NOTE 1	NOTE 4	1	SMA5081-6-127 /06
8	GASKET	SILICONE	RED	1	GS-25/205X35
7	CONTACT BODY	NOTE 1	NOTE 2	1	7161141A1-5
6	GASKET	SILICONE	RED	1	GS-24/22XD1
5	SHELL	NOTE 1	NOTE 2	1	7161141A1-7
4	CONTACT PIN	NOTE 1	NOTE 4	1	7161181B1-4
3	CONTACT PIN	NOTE 3	NOTE 4	1	7166481A1-5 -.141
2	INSULATOR	NOTE 5	NATURAL	1	7166481B1-2T -.085
1	BARREL	NOTE 1	NOTE 2	1	7161181B1-1- 32/224
NO.	DESCRIPTION	MATERIAL	FINISH	Q'TY	DRAWING NO.

NOTES: FINISH (PLATING THICKNESS IN MICRO-INCHES)
 1. BRASS PER QQ-B-626
 2. SILVER PL. 120 MIN. THICK OVER COPPER STRIKE
 3. BERYLLIUM COPPER PER QQ-C-530
 4. SILVER PL. 200 MIN. THICK OVER COPPER STRIKE
 5. TEFLON MIL-P-1946B

DIMENSIONS ARE IN MILLIMETERS
 UNLESS OTHERWISE SPECIFIED TOLERANCES
 0.5-6 = ±0.2
 6-30 = ±0.4
 30-120 = ±0.6
 120-315 = ±1
 315-1000 = ±1.6
 1000-2000 = ±2.4

PART NO.	7161181A1-120STS-11-50	
APPROVED	DATE	10-11-01'
CHECKED	DATE	10-11-01'
DRAWN	DATE	10-11-01'
FILE NO.		

Amphenol	
TITLE	7/16 SEMI-RIGID PLUG (FOR .085")
DRAWING NO.	KJ-7161181B1-120STS-.085-50
ITEM NO.	

1. CONTACT PIN TO SOLDER

		1		2		3		4		5		6		7		8	
--	--	---	--	---	--	---	--	---	--	---	--	---	--	---	--	---	--