

SO-1049-8772/8774

ENGINEERING DATA SHEET

RELAY SOCKET
10 AMP



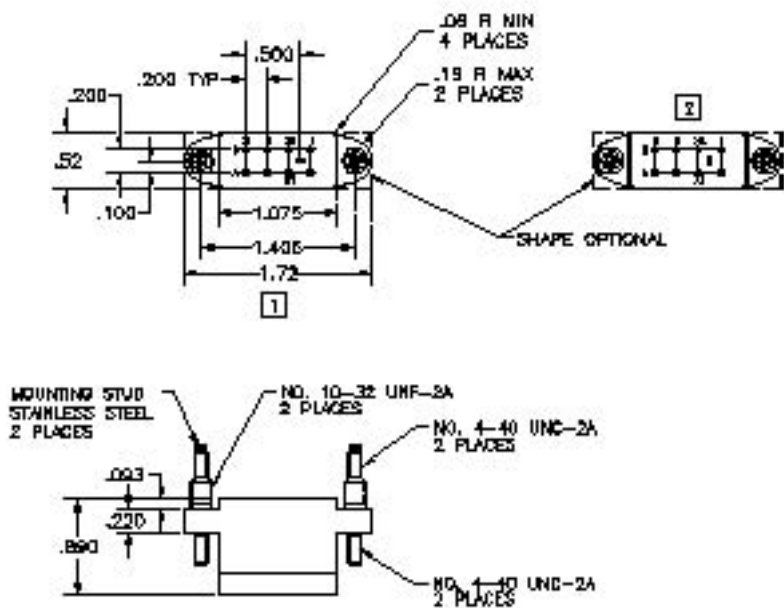
BASIC SOCKET SERIES DESIGNATION FOR:

Series JA

MEETS THE REQUIREMENTS OF:

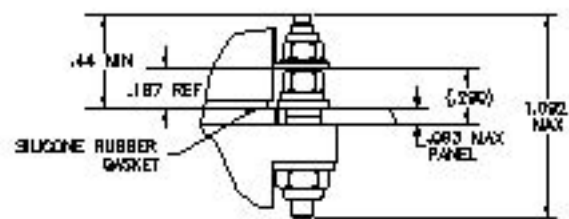
MIL-DTL-12883

SOCKET DRAWING

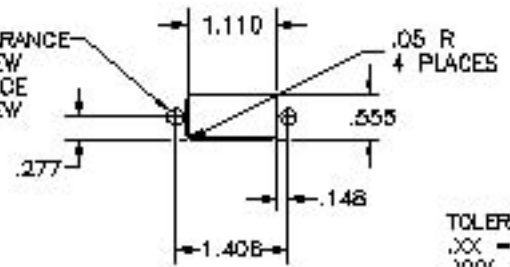


HARDWARE MOUNTING

MOUNTING DETAIL



BOTTOM MOUNT—CLEARANCE
HOLE FOR .192 SCREW
TOP MOUNT—CLEARANCE
HOLE FOR .112 SCREW



TOLERANCE:
.XX = .03
.XXX = .010

MOUNTING DIMENSIONS

GENERAL CHARACTERISTICS

[1] Supplied with mounting hardware and No. 16 contacts, No. 16 crimp for coil 115 Vac, rear release (SO-1049-8772)

[2] Supplied with mounting hardware and No. 16 contacts, No. 16 crimp for coil 28 Vac, rear release (SO-1049-8774)

3. Standard tolerances .xx ±.01; xxx ±.005

4. Weight .073 lb. max

[5] Temperature range -70° C to +125° C



Featuring **LEACH**® power and control solutions
www.esterline.com

AMERICAS
6900 Orangethorpe Ave.
P.O. Box 5032
Buena Park, CA 90622

EUROPE
2 Rue Goethe
57430 Sarralbe
France

ASIA
Units 602-603 6/F Lakeside 1
No.8 Science Park West Avenue
Phase Two, Hong Kong Science Park
Pak Shek Kok, Tai Po, N.T.
Hong Kong

Tel: (01) 714-736-7599
Fax: (01) 714-670-1145

Tel: (33) 3 87 97 31 01
Fax: (33) 3 87 97 96 86

Tel: (852) 2 191 3830
Fax: (852) 2 389 5803

Data sheets are for initial product selection and comparison. Contact Esterline Power Systems prior to choosing a component.