

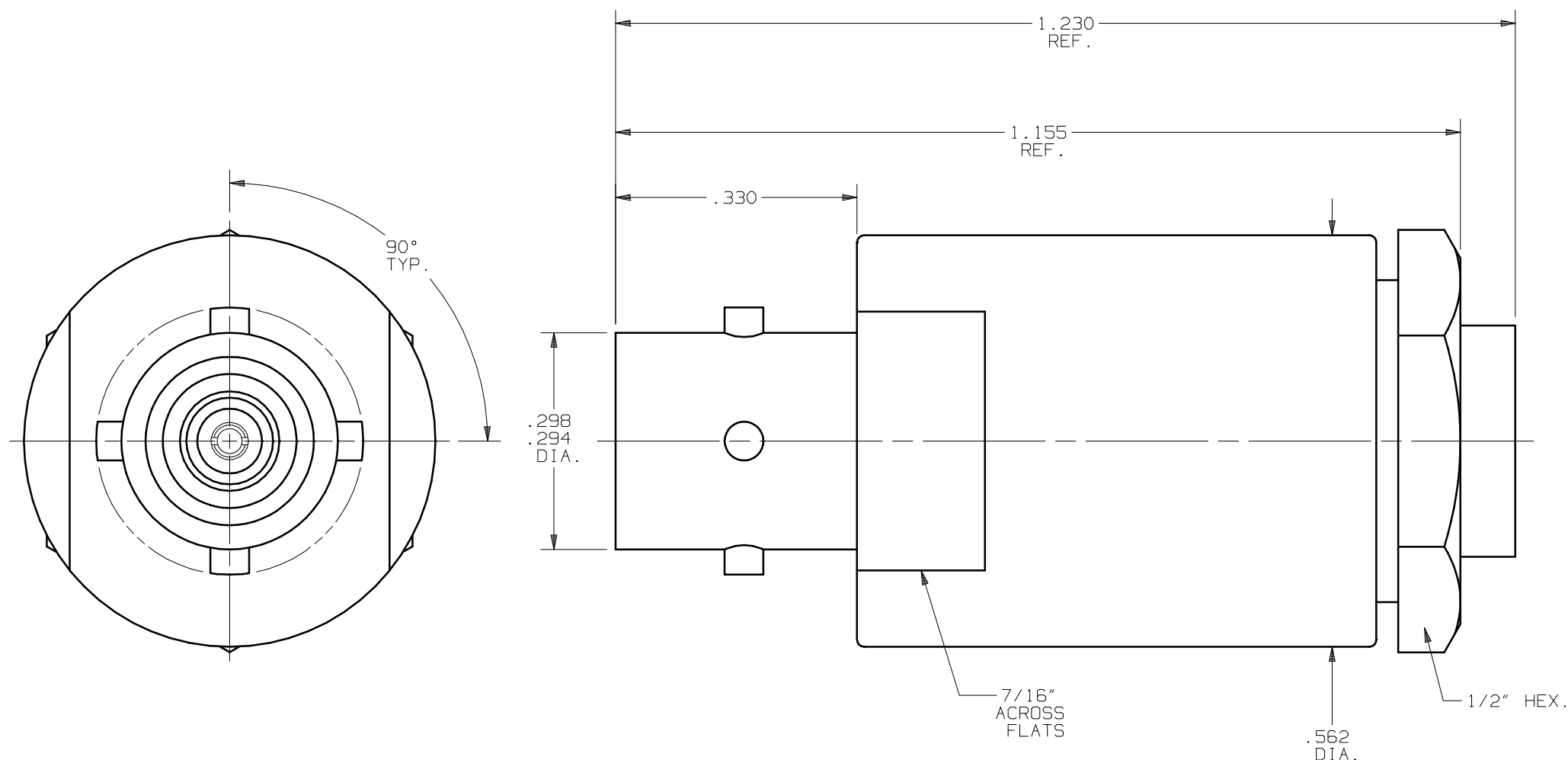
PRODUCT DATA DRAWING

CAD
GENERATED
DRAWING

DCN
CONTROLLED
DOCUMENT

DWG. NO.

SF8727-6102



MATERIALS:

BODY,
CLAMP NUT
& FERRULE: STAINLESS STEEL PER AMS-5640,
UNS S30300 (TYPE 1), COND. A

INSULATOR: TEFLON PER ASTM-D-1457

CONTACT: BERYLLIUM COPPER PER ASTM-B196
COND. TD04, ALLOY UNS-C17300

GASKET: SILICONE RUBBER PER ZZ-R-765,
CLASS II, GRADE 50-60

FINISHES:

BODY &
CLAMP NUT: PASSIVATE PER QQ-P-35C, TYPE II

CONTACT &
FERRULE: GOLD PER MIL-G-45204, TYPE I,
GRADE C, CLASS 1 OVER NICKEL
PER QQ-N-290, CLASS 1

ELECTRICAL

IMPEDANCE: 50 OHMS
FREQ. RANGE: .25 TO 2.0 GHz
D.W.V.: 1000 VRMS MIN.
INSUL. RES.: 5,000 MEGOHMS

SYM.	DESCRIPTION	DATE	APPR.	UNLESS OTHERWISE SPECIFIED: 1) ALL DIMENSIONS ARE AFTER PLATING. 2) BREAK CORNERS & EDGES .005 R. MAX. 3) CHAM. 1st & LAST THDS. 4) SURFACE ROUGHNESS 63 J MIL-STD-10. 5) DIAS. ON COMMON CENTERS TO BE CONCENTRIC WITHIN .005 T.I.R. 6) REMOVE ALL BURRS.	DIMENSIONS ARE IN INCHES			TITLE:
					DECIMALS	FRACTIONAL	ANGULAR	
-	REL. NRN 27557	10/01	STW		.X ±.030	±1/64	X° ±1°0'	ZMA JACK (90° TYP.) FOR LA-290S CABLE
					.XX ±.015		X°X' ±15'	
					.XXX ±.005			
				DRAWN: VMJ 10/20/01	FINISH: PER BOM	SIZE	CAGE NO.	SCALE
				CHECKED: STW 10/22/01		B	95077	5X
				APPROVED: STW 10/22/01				

SV Microwave, Inc.
3301 Electronics Way
West Palm Beach, FL 33407

SF8727-6102