



# RJ45 ETHERNET MIL-DTL-26482 Bayonet Coupler

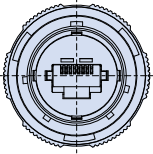


IPT303 receptacle with RJ45 jack to rear solder cup termination

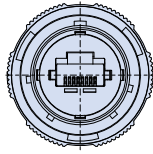


## RJ45 Orientation Options

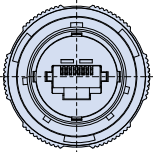
CODE 1



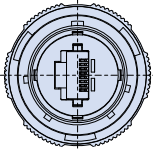
CODE 3



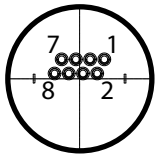
CODE 2



CODE 4

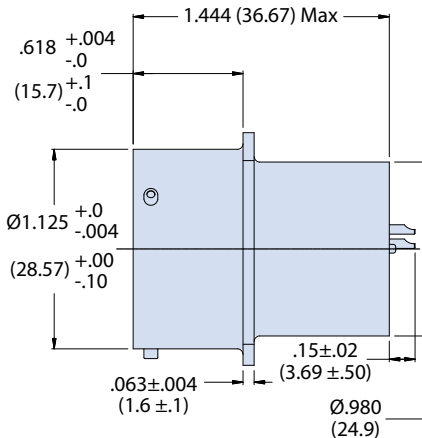
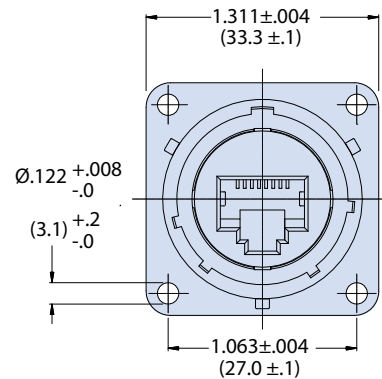


## Solder cup layout (Code 1 Orientation Shown)

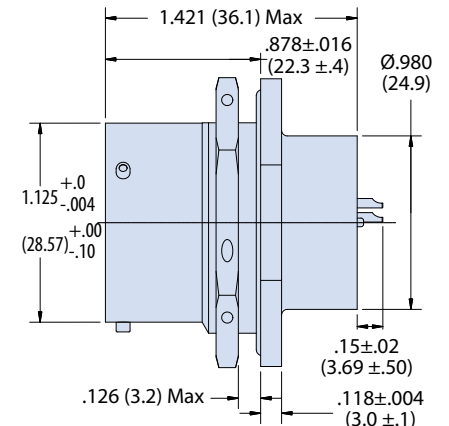
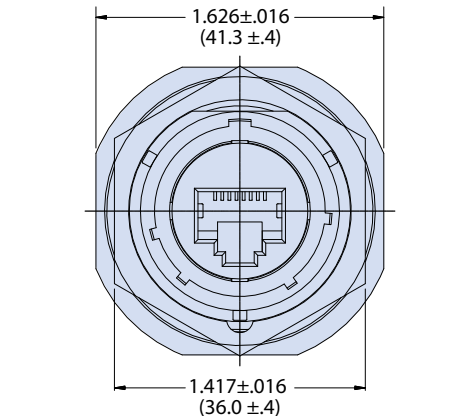


How to Order	
Sample Part Number	IPT303 00 G 18 6A 1 F6
Basic Number	IPT303
Connector Style <sup>1</sup>	02 = Front Panel Square Flange Mount Receptacle 07 = Rear Panel Mount Jam Nut Receptacle
Insert-to-Shell Grounding	G = Insert grounded to shell Omit for none (for use with shielded cable) (Use only with G3, F11 or F7 finish)
Shell Size	18
RJ45 Category <sup>2</sup>	5E = Cat5e 6A = Cat6a
RJ45 Orientation	1,2,3 or 4
Finish	Omit for Cadmium/Olive Drab F6 = Black Polymer Electrocoat F7 = Conductive Black Zinc Nickel F11 = Electroless Nickel G3 = Cadmium with Olive Drab Passivation

## 02 - FRONT PANEL MOUNT SQUARE FLANGE RECEPTACLE



## 07 - REAR PANEL MOUNTING JAM NUT RECEPTACLE



## NOTES

- See Section A for recommended panel cut out dimensions and solder cup layout