

### FEMALE RECEPTACLES

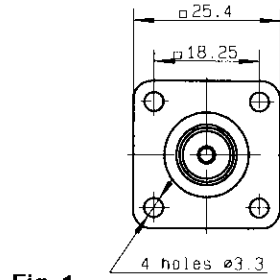


Fig. 1

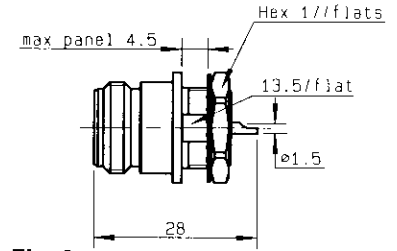
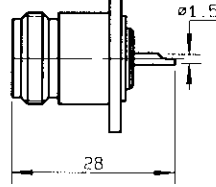


Fig. 2

part number	fig.	captured center contact	panel
R162 403 000	1	YES	P04
R162 570 000	2	YES	P02

### IN SERIES ADAPTERS

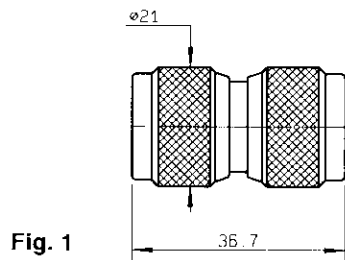
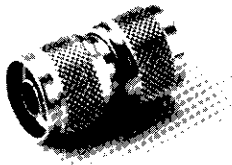


Fig. 1

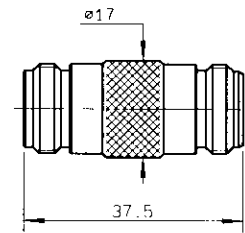


Fig. 2

part number	fig.	captured center contact
R162 703 000	1	YES
R162 705 000	2	YES

Note : standard packaging = 50 pieces. For unit packaging, add "W" after the P/N.