

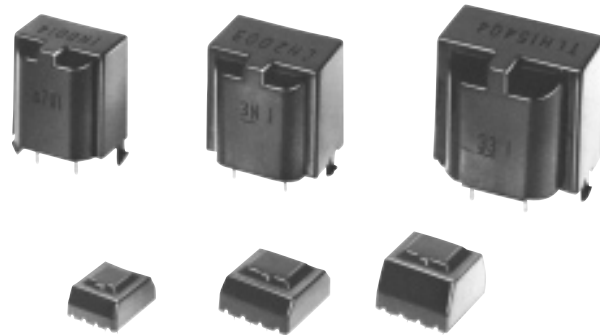
Input & Output Transformers

Series: **Y** (For General Use)

Series: **Z** (Comforms to Safety Standard)

Suitable as low-frequency transformers, audio output transformers, input, pulse, horizontal and line transformers.

Japan
Singapore
Indonesia
Brazil



Features

- Enclosed Housing
- Can be automatically inserted
- Thin design (Type E14C 9.0 mm)

Recommended Applications

- CTV, Displays
- Telephones

Explanation of Part Numbers

1	2	3	4	5	6	7	8	9	10	10
E	T	H	1	9	Y	1	2	0	A	Y
Product Code			Style	Classification		Design No.			Structure	

Packaging Methods

Size	E09K	E14C	E19D	E19C	E14A	E16B	E19B	E24B
Min. Quantity (pcs.)	100	200	100	100	100	100	100	50
Quantity/Shipping Box (pcs.)	1000	400	200	200	1000	500	500	200

Example of Applications

Size		Type					
		Input Transformer	Output Transformer	Pulse Transformer	Horizontal Driv. Trans.	Matching Transformer	Line Transformer
Thin type	E14C						
	E19D	○	○	○	—	○	○
	E19C						
Standard type	E09K	—	—	○	○	—	—
	E14A						
	E16B	○	○	○	○	○	○
	E19B						
	E24B						

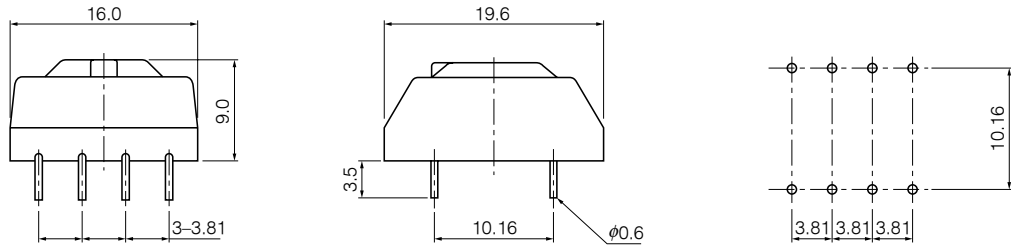
Y Series: does not conform to safety standards

Rev.02/04

Dimensions in mm (not to scale)

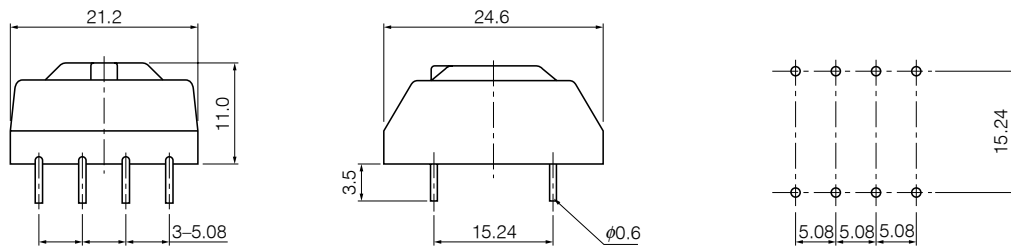
E14C (Series Y)

Recommended PWB Piercing Plan
(Top View)



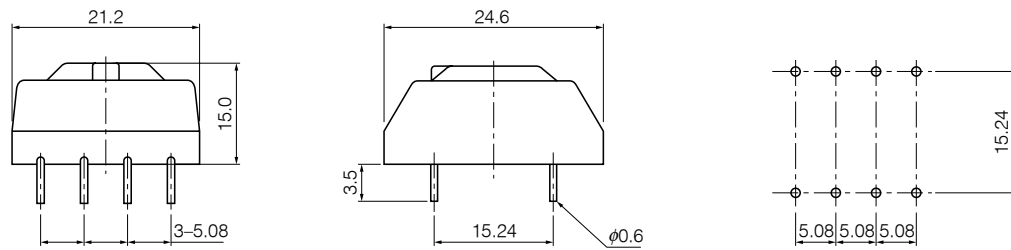
E19D (Series Y)

Recommended PWB Piercing Plan
(Top View)



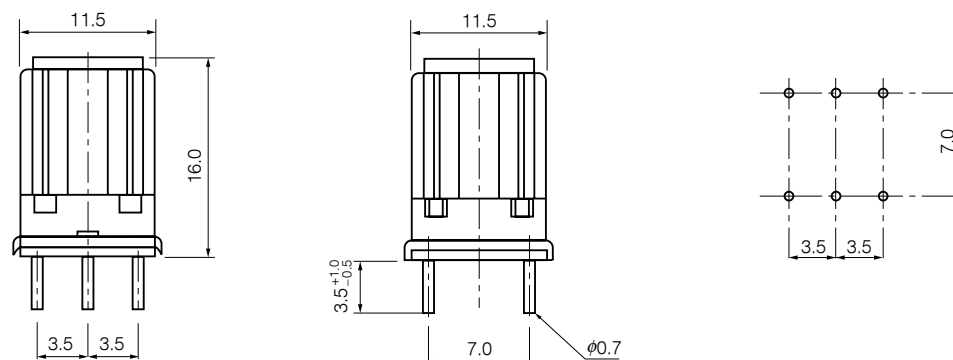
E19C (Series Y)

Recommended PWB Piercing Plan
(Top View)



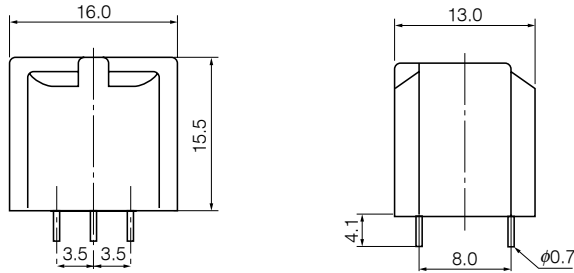
E09K (Series Y)

Recommended PWB Piercing Plan
(Top View)

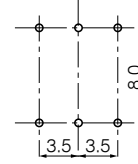


Dimensions in mm (not to scale)

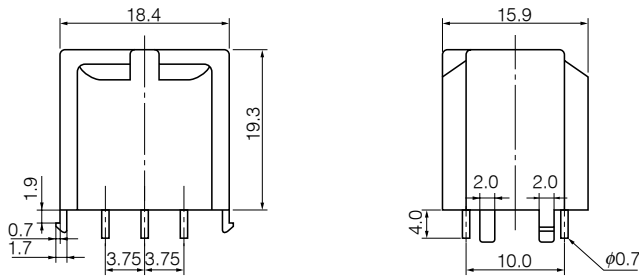
E14A (Series Y)



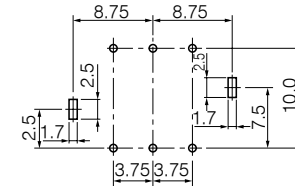
Recommended PWB Piercing Plan
(Top View)



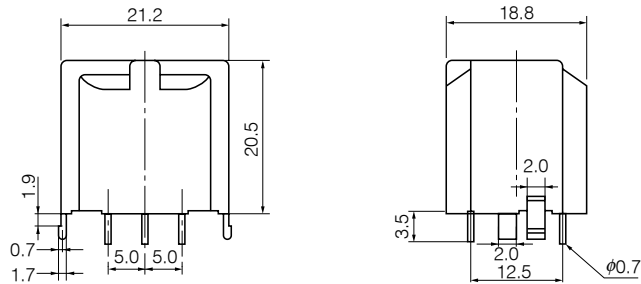
E16B (Series Y · Z)



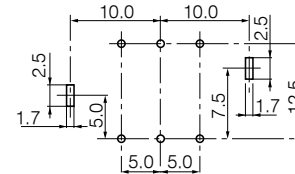
Recommended PWB Piercing Plan
(Top View)



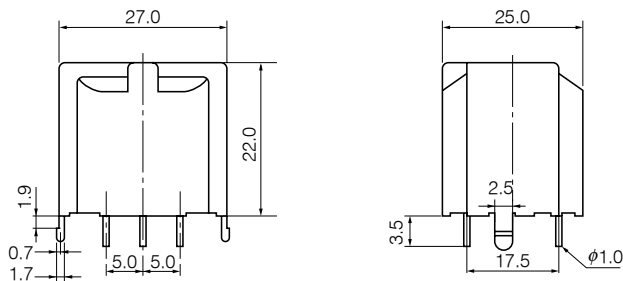
E19B (Series Y · Z)



Recommended PWB Piercing Plan
(Top View)



E24B (Series Y · Z)



Recommended PWB Piercing Plan
(Top View)

