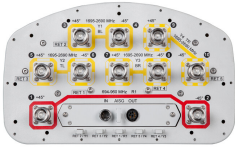


10P-2L8M-D5



10-port sector antenna, 2x 694–960 and 8x 1695–2690 MHz, 65° HPBW, 5x RET with tilt indicators

- 5 Independent Arrays (1 Low band and 4 high bands) in a single Radome housing. High band arrays are perfectly symmetrical inside the antenna ensuring pattern consistency across ports, important for carrier aggregation
- Optimized radome design leading to market leading wind load performance
- Antenna with retractable tilt scale indicators and integrated pluggable RET
- Uses the 4.3-10 connector which is 40 percent smaller than the 7-16 DIN connector

General Specifications

Antenna Type	Sector
Band	Multiband
Color	Light gray
Grounding Type	RF connector inner conductor and body grounded to reflector and mounting bracket
Performance Note	Outdoor usage
Radome Material	Fiberglass, UV resistant
RF Connector Interface	4.3-10 Female
RF Connector Location	Bottom
RF Connector Quantity, high band	8
RF Connector Quantity, low band	2
RF Connector Quantity, total	10

Remote Electrical Tilt (RET) Information

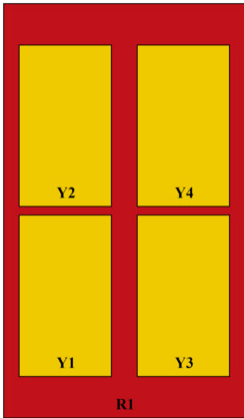
RET Hardware	CommRET v2
RET Interface, quantity	1 female 1 male
Input Voltage	10–30 Vdc
Internal RET	High band (4) Low band (1)
Power Consumption, active state, maximum	10 W
Power Consumption, idle state, maximum	2 W
Protocol	3GPP/AISG 2.0 (Single RET)

Dimensions

10P-2L8M-D5

Width	301 mm 11.85 in
Depth	181 mm 7.126 in
Length	2688 mm 105.827 in
Net Weight, without mounting kit	26.2 kg 57.761 lb

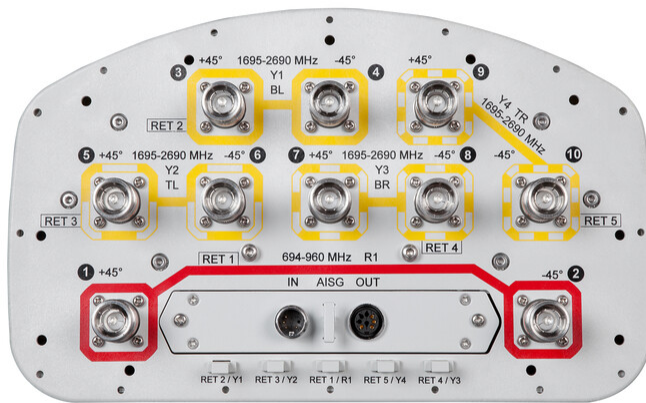
Array Layout



Array ID	Frequency (MHz)	RF Connector	RET (SRET)	AISG RET UID
R1	694-960	1 - 2	1	CPxxxxxxxxxxxxxxxxR1
Y1	1695-2690	3 - 4	2	CPxxxxxxxxxxxxxxxxY1
Y2	1695-2690	5 - 6	3	CPxxxxxxxxxxxxxxxxY2
Y3	1695-2690	7 - 8	4	CPxxxxxxxxxxxxxxxxY3
Y4	1695-2690	9 - 10	5	CPxxxxxxxxxxxxxxxxY4

(Sizes of colored boxes are not true depictions of array sizes)

Port Configuration



Electrical Specifications

10P-2L8M-D5

Impedance	50 ohm
Operating Frequency Band	1695 – 2690 MHz 694 – 960 MHz
Polarization	±45°
Total Input Power, maximum	1,000 W

Electrical Specifications

Frequency Band, MHz	694–790	790–890	890–960	1695–1920	1920–2200	2300–2500	2500–2690
Gain, dBi	16.4	16.7	16.9	17.3	17.8	17.8	18.1
Beamwidth, Horizontal, degrees	71	68	64	63	63	58	61
Beamwidth, Vertical, degrees	8.2	7.5	7	7	6.3	5.6	5.3
Beam Tilt, degrees	0–10	0–10	0–10	2–12	2–12	2–12	2–12
USLS (First Lobe), dB	15	15	21	16	18	18	19
Front-to-Back Ratio at 180°, dB	33	31	30	35	36	34	35
Front-to-Back Ratio, Copolarization 180° ± 30°, dB	28	29	27	30	30	29	29
Isolation, Cross Polarization, dB	28	28	28	28	28	28	28
Isolation, Inter-band, dB	28	28	28	28	28	28	28
VSWR Return loss, dB	1.5 14.0	1.5 14.0	1.5 14.0	1.5 14.0	1.5 14.0	1.5 14.0	1.5 14.0
PIM, 3rd Order, 2 x 20 W, dBc	-153	-153	-153	-153	-153	-153	-153
Input Power per Port, maximum, watts	300	300	300	250	250	250	250

Electrical Specifications, BASTA

Frequency Band, MHz	694–790	790–890	890–960	1695–1920	1920–2200	2300–2500	2500–2690
Gain by all Beam Tilts, average, dBi	16.2	16.4	16.7	16.8	17.3	17.4	17.7
Gain by all Beam Tilts Tolerance, dB	±0.3	±0.3	±0.3	±0.8	±0.4	±0.5	±0.5
Beamwidth, Horizontal Tolerance, degrees	±1.9	±1.7	±1.5	±4.3	±5.6	±6.5	±5.2
Beamwidth, Vertical Tolerance, degrees	±0.5	±0.5	±0.3	±0.9	±0.9	±0.7	±0.6
USLS, beampeak to 20° above beampeak, dB	14	14	17	14	16	15	16
Front-to-Back Total Power at 180° ± 30°, dB	24	24	24	26	27	26	27

10P-2L8M-D5

CPR at Boresight, dB	23	31	24	16	19	18	16
CPR at Sector, dB	13	12	12	10	8	7	6

Mechanical Specifications

Wind Loading @ Velocity, frontal	441.0 N @ 150 km/h (99.1 lbf @ 150 km/h)
Wind Loading @ Velocity, lateral	374.0 N @ 150 km/h (84.1 lbf @ 150 km/h)
Wind Loading @ Velocity, rear	448.0 N @ 150 km/h (100.7 lbf @ 150 km/h)
Wind Speed, maximum	241 km/h 149.75 mph

Packaging and Weights

Width, packed	441 mm 17.362 in
Depth, packed	337 mm 13.268 in
Length, packed	2833 mm 111.535 in
Weight, gross	40.2 kg 88.626 lb
Weight, net	26.2 kg 57.761 lb

Regulatory Compliance/Certifications

Agency	Classification
CHINA-ROHS	Above maximum concentration value
ISO 9001:2015	Designed, manufactured and/or distributed under this quality management system
ROHS	Compliant/Exempted



Included Products

BSAMNT-3	-	Wide Profile Antenna Downtilt Mounting Kit for 2.4 - 4.5 in (60 - 115 mm) OD round members. Kit contains one scissor top bracket set and one bottom bracket set.
----------	---	--

* Footnotes

Performance Note	Severe environmental conditions may degrade optimum performance
-------------------------	---