

# N Connectors

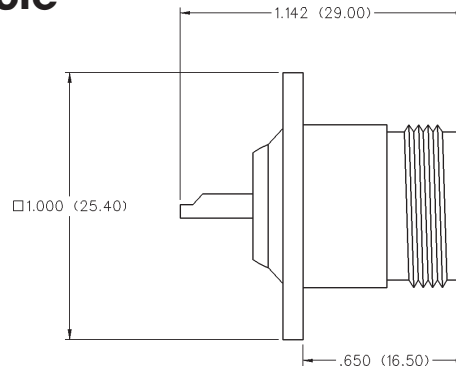
Panel Mount and In-Series Adapters

INCHES (MILLIMETERS) • CUSTOMER DRAWINGS AVAILABLE ON REQUEST



## Flange Mount Jack Receptacle

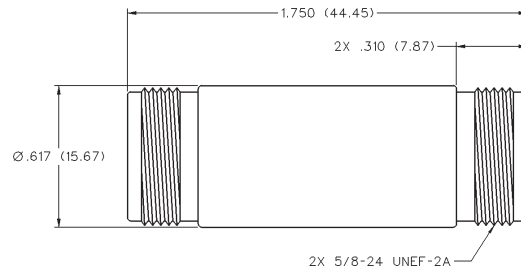
**PART NO.**  
CP-AD801



Mounting hole layout figure 34 page 204.

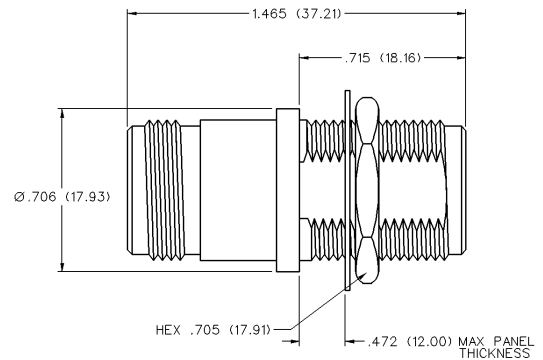
## Jack to Jack Adapter

**PART NO.**  
CP-AD850



## Jack to Bulkhead Jack Adapter

**PART NO.**  
CP-AD851



Mounting hole layout figure 33 page 204.

## Plug to Plug Adapter

**PART NO.**  
CP-AD800

