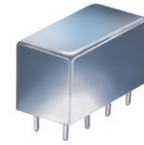


Plug-In

# Power Splitter/Combiner

## PSC-2-45

2 Way-0° 50Ω 700 to 900 MHz



CASE STYLE: A01  
PRICE: \$27.20 ea. QTY. (1-9)

### Maximum Ratings

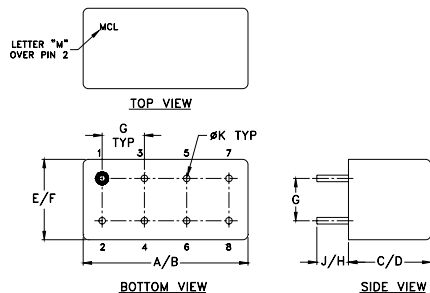
Operating Temperature	-55°C to 100°C
Storage Temperature	-55°C to 100°C
Power Input (as a splitter)	1W max.
Internal Dissipation	0.125W max.

Permanent damage may occur if any of these limits are exceeded.

### Pin Connections

SUM PORT	1
PORT 1	5
PORT 2	6
GROUND	2,3,4,7,8
CASE GROUND	2,3,4,7,8

### Outline Drawing



### Outline Dimensions (inch/mm)

A	B	C	D	E	F		
.770	.800	.385	.400	.370	.400		
19.56	20.32	9.78	10.16	9.40	10.16		
G	H	J	K			wt	
.200	.20	.14	.031			grams	
5.08	5.08	3.56	0.79				5.2

### Features

- low insertion loss, 0.2 dB typ.
- rugged welded construction

### Applications

- VHF
- defense & federal communication
- cellular

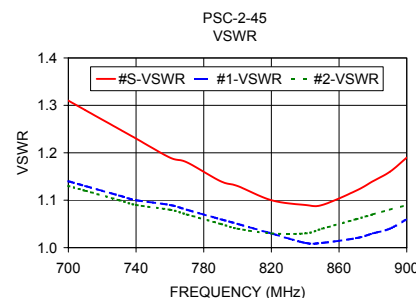
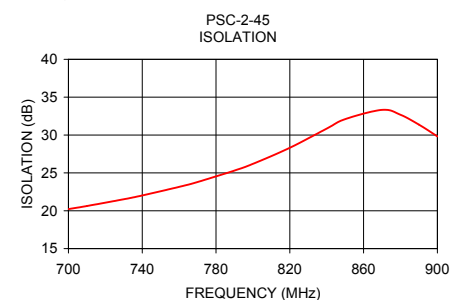
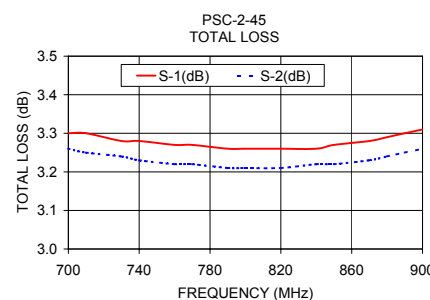
### Electrical Specifications

FREQ. RANGE (MHz)	ISOLATION (dB)		INSERTION LOSS (dB) ABOVE 3.0 dB		PHASE UNBALANCE (Degrees)	AMPLITUDE UNBALANCE (dB)
	Typ.	Min.	Typ.	Max.	Max.	Max.
$f_c - f_u$						
700-900	20	17	0.2	0.4	3.0	0.2

### Typical Performance Data

Frequency (MHz)	Total Loss <sup>1</sup> (dB)		Amplitude Unbalance (dB)	Isolation (dB)	Phase Unbalance (deg.)	VSWR S	VSWR 1	VSWR 2
	S-1	S-2						
700.00	3.30	3.26	0.05	20.22	0.47	1.31	1.14	1.13
710.00	3.30	3.25	0.04	20.63	0.49	1.29	1.13	1.12
730.00	3.28	3.24	0.05	21.52	0.51	1.25	1.11	1.10
740.00	3.28	3.23	0.05	22.02	0.52	1.23	1.10	1.09
760.00	3.27	3.22	0.05	23.15	0.53	1.19	1.09	1.08
770.00	3.27	3.22	0.05	23.80	0.54	1.18	1.08	1.07
790.00	3.26	3.21	0.05	25.31	0.56	1.14	1.06	1.05
800.00	3.26	3.21	0.05	26.20	0.56	1.13	1.05	1.04
820.00	3.26	3.21	0.05	28.32	0.58	1.10	1.03	1.03
840.00	3.26	3.22	0.05	30.85	0.61	1.09	1.01	1.03
850.00	3.27	3.22	0.05	32.10	0.62	1.09	1.01	1.04
870.00	3.28	3.23	0.05	33.32	0.65	1.12	1.02	1.06
880.00	3.29	3.24	0.05	32.67	0.65	1.14	1.03	1.07
890.00	3.30	3.25	0.05	31.37	0.66	1.16	1.04	1.08
900.00	3.31	3.26	0.05	29.82	0.68	1.19	1.06	1.09

1. Total Loss = Insertion Loss + 3dB splitter loss.



### electrical schematic



**Mini-Circuits®**  
ISO 9001 ISO 14001 AS 9100 CERTIFIED  
IFIRF MICROWAVE COMPONENTS

For detailed performance specs & shopping online see web site

P.O. Box 350166, Brooklyn, New York 11235-0003 (718) 934-4500 Fax (718) 332-4661 The Design Engineers Search Engine [minicircuits.com](http://www.minicircuits.com) Provides ACTUAL Data Instantly at [minicircuits.com](http://www.minicircuits.com)

Notes: 1. Performance and quality attributes and conditions not expressly stated in this specification sheet are intended to be excluded and do not form a part of this specification sheet. 2. Electrical specifications and performance data contained herein are based on Mini-Circuit's applicable established test performance criteria and measurement instructions. 3. The parts covered by this specification sheet are subject to Mini-Circuits standard limited warranty and terms and conditions (collectively, "Standard Terms"); Purchasers of this part are entitled to the rights and benefits contained therein. For a full statement of the Standard Terms and the exclusive rights and remedies thereunder, please visit Mini-Circuits' website at [www.minicircuits.com/MCLStore/terms.jsp](http://www.minicircuits.com/MCLStore/terms.jsp).

REV. A  
M127604  
PSC-2-45  
HY/TD/CP/AM  
100602