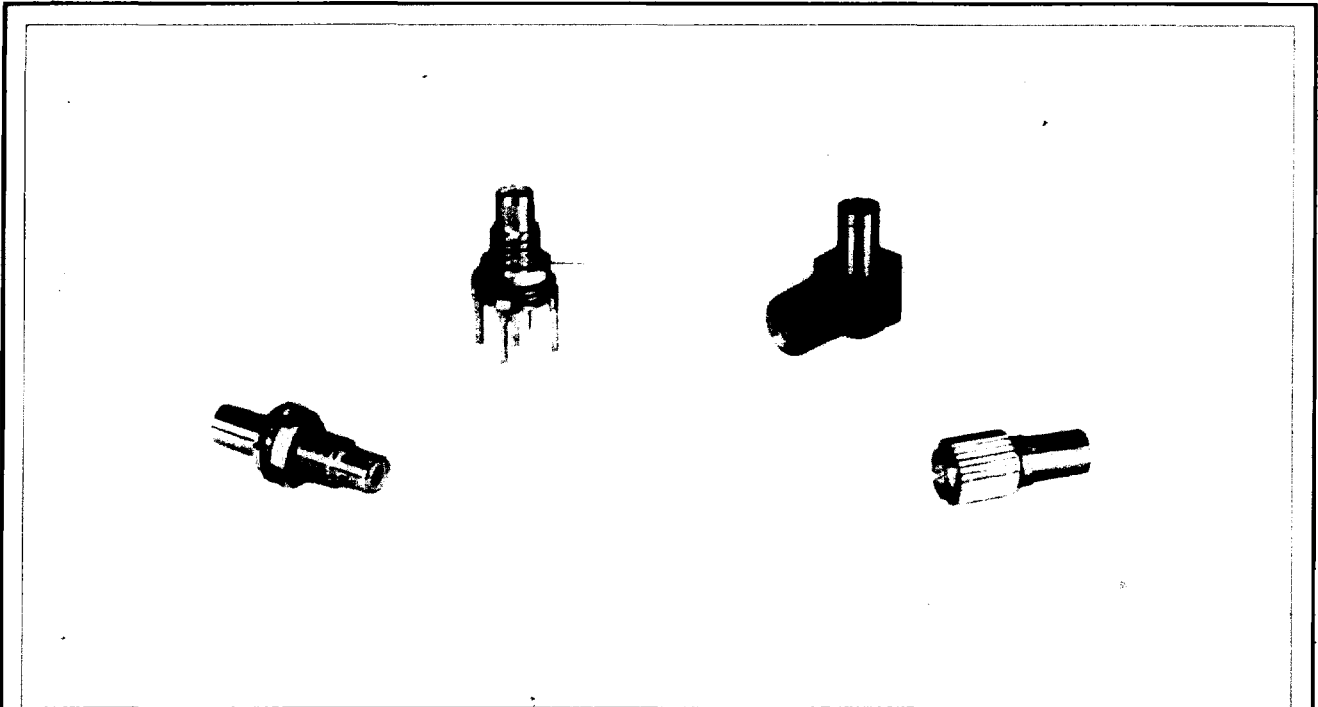


27DS Series



SMC Type Connectors



■ FEATURES

- 27DS series are connectors produced based on SMC type (Sub-miniature type C) specified in MIL-C-39012.
- 27DS is super small size coaxial cable connectors for 50 ohm group corresponding to minimization of communication equipment.
- Screw coupling method is applied to connection method and crimping method is applied to cable fixing.

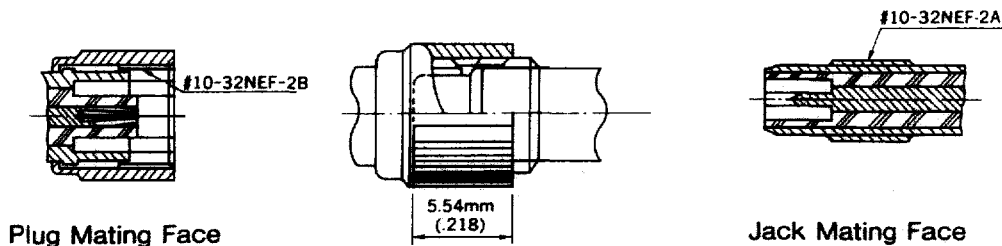
■ SPECIFICATION

Impedance.....50Ω
Dielectric withstanding ...AC1500V(r.m.s.)
voltage 1 minute
Insulation resistance1000MΩ min.
at 500V DC
Contact resistance6mΩ max.
at 1A DC
VSWR.....1.2max. 1GHz

■ MATERIAL/FINISH

Shell(Body)Brass/Nickel plate
Contact(male)Brass/Gold plate
Contact(female) ...Beryllium copper/Gold plate
InsulatorsTeflon

■ Mating Dimension

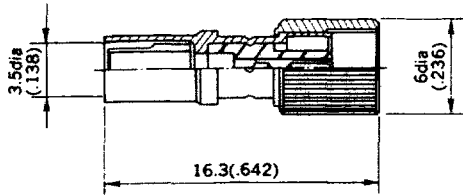


27DS Series



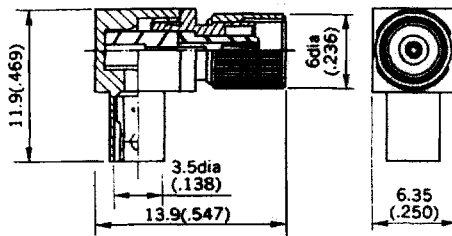
Unit:mm(inch)

■ Straight plugs



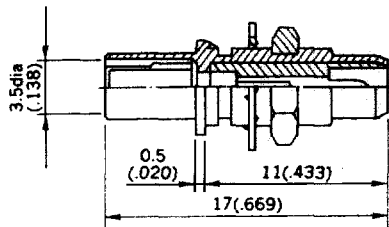
Name	Part no.	Applicable Cable	Hand crimp tool P/N
27DS-P-1.5	28302	1.5D-QEV 1.5D-2V	CR-H-1101
27DS-P-196U	28307	RG-196A/U	CR-H-1101

■ Angle plugs



Name	Part no.	Applicable Cable	Hand crimp tool P/N
27DS-LP-1.5	28304	1.5D-QEV 1.5D-2V	CR-H-1101
27DS-LP-196U	28309	RG-196A/U	CR-H-1101

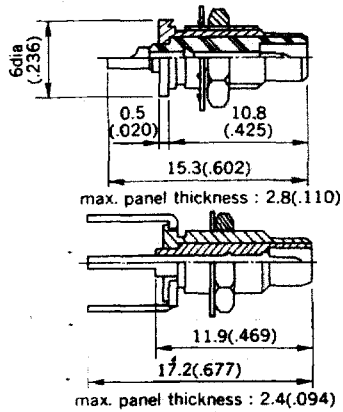
■ Bulkhead jack



Name	Part no.	Applicable Cable	Hand crimp tool P/N	Mounting hole
27DS-BJ-1.5	28306	1.5D-2V	CR-H-1101	Y

max. panel thickness: 3(.118)

■ Receptacles



Name	Part no.	Mounting hole
27DS-BR	28301	Y

Name	Part no.	Mounting hole
27DS-R-PC	28305	Z

■ Mounting hole

