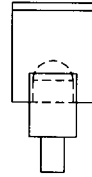
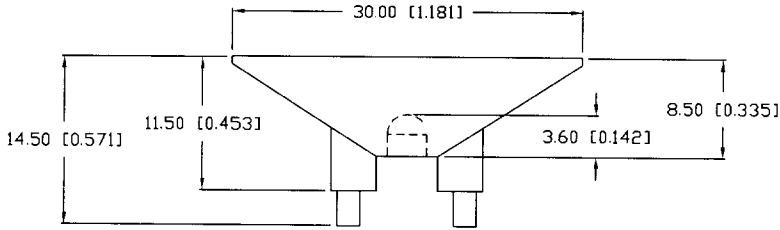


LLP-LXB010730D-12

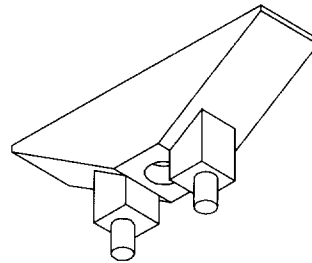
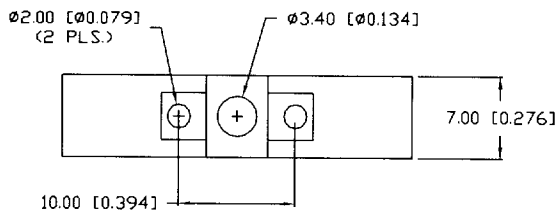
• Ready to Order

Recommended LED: SML-LX3064xx SERIES

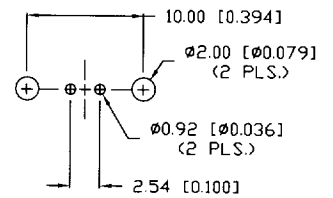


NOTES:

1. MATERIAL: MILKY WHITE POLYCARBONATE, UL94V-0.
2. TEMP. RANGE: -60°C TO +125°C.
3. RECOMMENDED LED: SSL-LX3064xx SERIES.



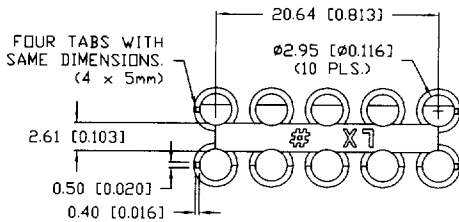
PCB LAYOUT



LLP-LXV30C1012-11

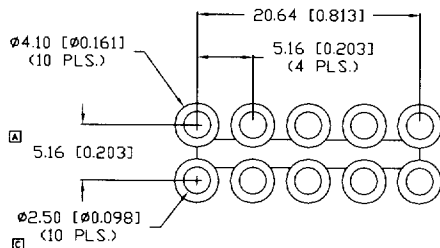
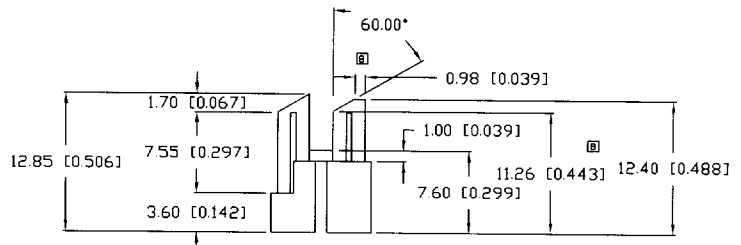
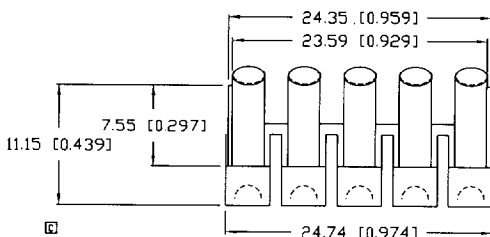
• Custom Order

Recommended LED: SML-LX3044xx SERIES



NOTES:

1. CAVITY MARK AND 'LX' MARK ON TOP SURFACE.
2. ALL LIGHT PIPE TOP SURFACES TO BE DIFFUSED.
3. ALL OTHER SURFACES TO HAVE SMOOTH, CLEAR FINISH.
4. MATERIAL: CLEAR POLYCARBONATE.
5. RECOMMENDED LED: SSL-LX3044xx SERIES.



- 10 CYLINDERS,
2.95 [0.116]
CUT AT 30° ANGLE
BACK ROW CHAMFERED.

