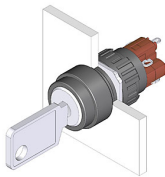


EAO – Your Expert Partner for Human Machine Interfaces

51-135.025D2 - Keylock switch 2 positions

51-135.025D2 - Keylock switch 2 positions



Attention: The preview is based on a sample product. This can differ from your current configuration.

Mounting

Mounting cut-out Ø 16 mm
Design raised

Front

Front dimension Ø 18 mm
Front shape round

Other Attributes

Weight 0,016 kg

Operating-/Indication part

Switching angle 90° right

IP-Rating

Front protection IP65

Connection Method

Terminal Solder

Actuator

Switching action Rest(a) - Maintain(a)

Switching element

Rotary positions 2
Switching system Snap-action switching element
Switching current 5 A
Contacts 1 NC + 1 NO
Contact material 250 V AC
Switching voltage

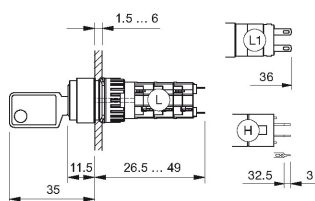
Function

Keylock switch

EAO – Your Expert Partner for Human Machine Interfaces

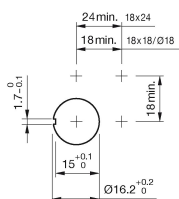
51-135.025D2 - Keylock switch 2 positions

Dimensions

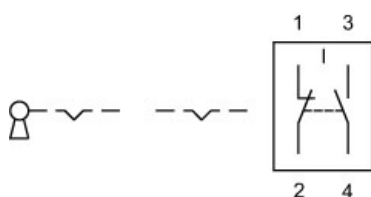


H = Universal terminal 2.0 x 0.5 mm

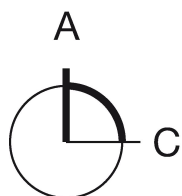
Mounting cut-outs



Wiring diagram



Switching positions



Additional information

Standard lock: DOM 311

Two keys are supplied with each key lock switch

Optional lock numbers on request

Legend

Contacts: NC = Normally closed, NO = Normally open

Switching action: A = Rest, C = Maintained