

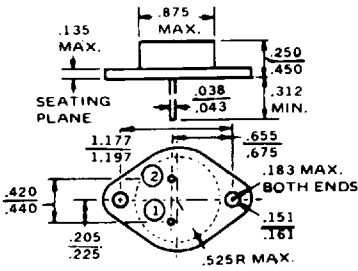
# SILICON TRANSISTORS

ADVANCED SEMICONDUCTOR

82 DE 0258354 0000055 5

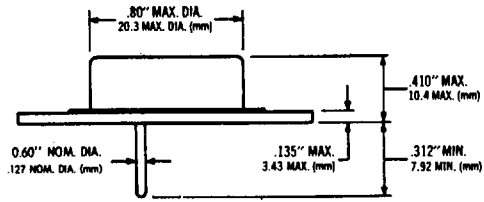
DEVICE TYPE NO.	POLARITY	MAXIMUM RATINGS					ELECTRICAL CHARACTERISTICS				CASE
		$P_D @ T_C=25^\circ C$ WATTS	$I_C$ AMPS	$BV_{CBO}$	$BV_{CE}$	$BV_{EBO}$	$h_{FE}$ MIN.	$I_C$ AMPS	$V_{CE}$	$f$ MHZ *KHZ	
MJ10005	NPN	175	20.0	500	400	8	40	10.0	5	10	TO3
MJ10006	NPN	150	10.0	450	350	8	30	5.00	5	10	TO3
MJ10007	NPN	150	10.0	500	400	8	30	5.00	5	10	TO3
MJ10008	NPN	175	20.0	650	450	8	30	10.0	5	8	TO3
MJ10009	NPN	175	20.0	700	500	8	30	10.0	5	8	TO3
MJ10012	NPN	175	10.0	600	400	8	100	6.00	6	8	TO3
MJ10013	NPN	175	10.0	650	550	8	10	10.0	5	10	TO3
MJ10014	NPN	175	10.0	700	600	8	10	10.0	5	10	TO3
MJ10015	NPN	250	50.0	600	400	8	10	40.0	5	10	TO3 MOD
MJ10016	NPN	250	50.0	700	500	8	10	40.0	5	10	TO3 MOD
MJ10022	NPN	250	40.0	450	350	8	8	40.0	5	10	TO3 MOD
MJ10023	NPN	250	40.0	600	400	8	8	40.0	5	10	TO3 MOD
MJ11011	PNP	200	30.0	60	60	5	200	30.0	5	4	TO3
MJ11012	NPN	200	30.0	60	60	5	200	30.0	5	4	TO3
MJ11013	PNP	200	30.0	90	90	5	200	30.0	5	4	TO3
MJ11014	NPN	200	30.0	90	90	5	200	30.0	5	4	TO3
MJ11015	PNP	200	30.0	120	120	5	200	30.0	5	4	TO3
MJ11016	NPN	200	30.0	120	120	5	200	30.0	5	4	TO3
MJ11028	NPN	300	50.0	60	60	5	400	50.0	5	2	TO3 MOD
MJ11029	PNP	300	50.0	60	60	5	400	50.0	5	2	TO3 MOD
MJ11030	NPN	300	50.0	90	90	5	400	50.0	5	2	TO3 MOD
MJ11031	PNP	300	50.0	90	90	5	400	50.0	5	2	TO3 MOD
MJ11032	NPN	300	50.0	120	120	5	400	50.0	5	2	TO3 MOD
MJ11033	PNP	300	50.0	120	120	5	400	50.0	5	2	TO3 MOD
MJ12002	NPN	75.0	2.50	1500	750	5	1.11	2.00	5	2	TO3
MJ12003	NPN	100	4.00	1500	750	5	2.5	3.00	5	2	TO3
MJ12004	NPN	100	5.00	1500	750	5	2.5	4.50	5	2	TO3
MJ12005	NPN	100	8.00	1500	750	5	5	5.00	5	2	TO3
MJ13100	NPN	175	210.0	650	400	6	8	15.0	3	6	TO3
MJ13101	NPN	175	20.0	750	450	6	8	15.0	3	6	TO3
MJ13330	NPN	175	20.0	400	200	6	8	10.0	5	5	TO3
MJ13331	NPN	175	20.0	450	250	6	8	10.0	5	5	TO3
MJ13332	NPN	175	20.0	650	35	6	10	5.00	5	2	TO3
MJ13333	NPN	175	20.0	700	400	6	10	5.00	5	2	TO3
MJ13334	NPN	175	20.0	750	450	6	10	5.00	5	2	TO3
MJ13335	NPN	175	20.0	800	500	6	10	5.00	5	2	TO3
MJ14000	NPN	300	60.0	60	60	5	15	50.0	3	1	TO3 MOD
MJ14001	PNP	300	60.0	60	60	5	15	50.0	3	1	TO3 MOD
MJ14002	NPN	300	60.0	80	80	5	15	50.0	3	1	TO3 MOD
MJ14003	PNP	300	60.0	80	80	5	15	50.0	3	1	TO3 MOD
MJ15001	NPN	200	15.0	140	140	5	25	4.00	2	2	TO3
MJ15002	PNP	200	15.0	140	140	5	25	4.00	2	2	TO3
MJ15003	NPN	250	20.0	140	140	5	25	5.00	2	2	TO3
MJ15004	PNP	250	20.0	140	140	5	25	5.00	2	2	TO3
MJE340	NPN	20	0.5	300	300	3	30	.05	10	10	TO126
MJE341	NPN	20	0.5	175	150	3	25	.05	10	15	TO126
MJE344	NPN	20	0.5	200	200	5	30	.05	10	15	TO126
MJE350	PNP	20	0.5	300	300	3	30	.05	10	10	TO126
MJE370	PNP	25	3	30	30	4	25	1.00	1	3	TO126
MJE371	PNP	40	4	40	40	4	40	1.00	1	2	TO126
MJE520	NPN	25	3	30	30	4	25	1.00	1	3	TO126
MJE521	NPN	40	4	40	40	40	40	1.00	1	2	TO126
MJE700	PNP	40	4	60	60	5	750	1.50	3	1	TO126
MJE701	PNP	40	4	60	60	5	750	2.00	3	1	TO126
MJE702	PNP	40	4	80	80	5	750	1.50	3	1	TO126
MJE703	PNP	40	4	80	80	5	750	2.00	3	1	TO126
MJE800	NPN	40	4	60	60	5	750	1.50	3	1	TO126
MJE801	NPN	40	4	60	60	5	750	2.00	3	1	TO126
MJE802	NPN	40	4	80	80	5	750	1.50	3	1	TO126
MJE803	NPN	40	4	80	80	5	750	2.00	3	1	TO126
MJE2501T	NPN	75	10	60	60	4	25	3.00	2	2	TO220
MJE2901T	PNP	75	10	60	60	4	25	3.00	2	2	TO220
MJE2955T	PNP	75	10	70	60	5	20	4.00	4	2	TO220
MJE3055T	NPN	75	10	70	60	5	20	4.00	4	2	TO220
MJE3439	NPN	15	0.3	450	350	5	50	.02	10	15	TO126
MJE3440	NPN	15	0.3	350	250	5	50	.02	10	15	TO126
MJE13004	NPN	75	4	600	300	9	8	2.00	5	4	TO220
MJE13005	NPN	75	4	700	400	9	8	2.00	5	4	TO220

### TO3

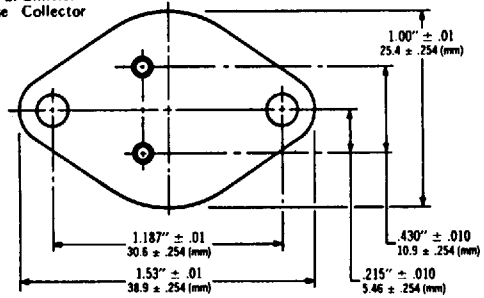


### TO3-MOD

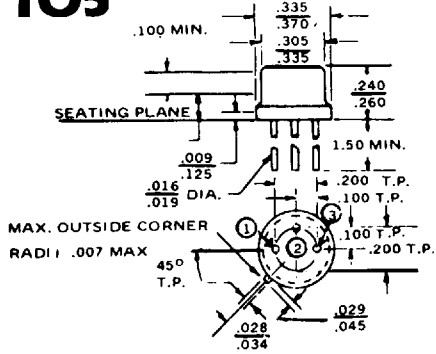
#### Case TO3 MODIFIED (.050" Pin Dia.)



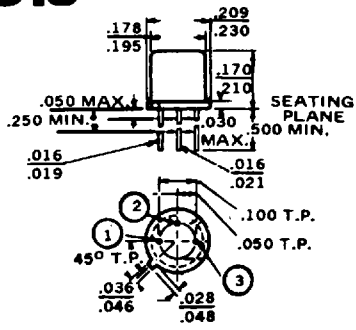
Pin 1. Base  
2. Emitter  
Case Collector



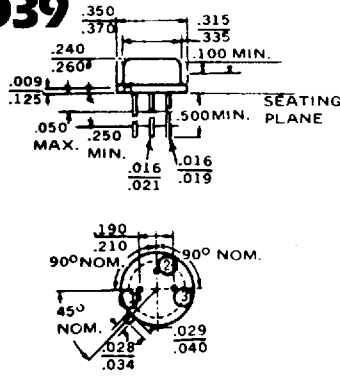
### TO5



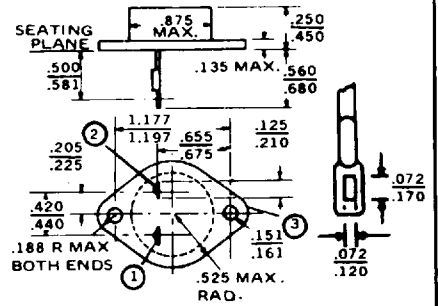
### TO18



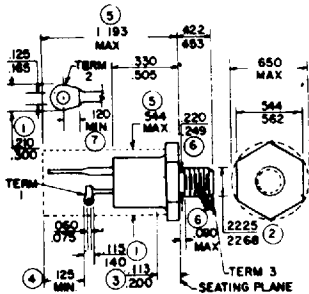
### TO39



### TO41



### TO48



### TO61

