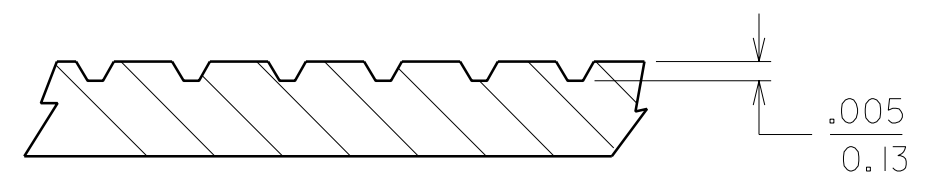
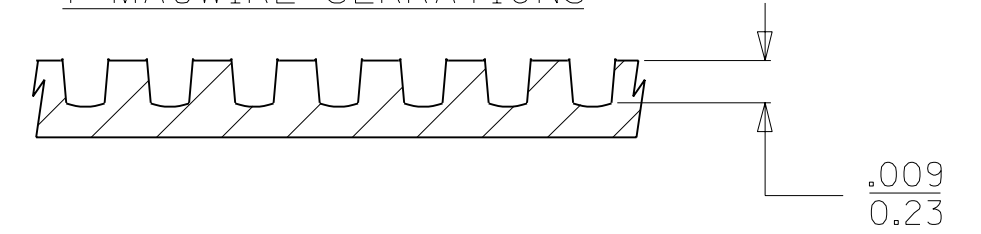


MATERIAL NUMBER	ENGINEERING NUMBER	MATERIAL	PLATING	SERRATIONS	NUMBER OF SERRATIONS	MATERIAL THICKNESS
193034010	MWS-1.5M-5M9	BRASS	TIN	MAGWIRE	9	.020/(0.51)
193034020	MWS-1.5M-5M9U	..	NONE	MAGWIRE	9	..
193034030	19303-4030	..	TIN	STANDARD	6	..
193034040	19303-4040	..	NONE	STANDARD	6	..
193034050	19303-4050	..	TIN	NONE	0	..
193034060	19303-4060	..	NONE	NONE	0	..
193034070	19303-4070	STEEL	TIN	STANDARD	6	..
193034080	19303-4080	..	TIN	NONE	0	..
193034090	MWS-1.5M-5M7	BRASS	TIN	MAGWIRE	7	..
103034091	MWS-1.5M-5M7U	..	NONE	MAGWIRE	7	..
193030007	19303-0007	STAINLESS	NONE	STANDARD	6	..
193030008	19303-0008	STEEL	NONE	NONE	0	..

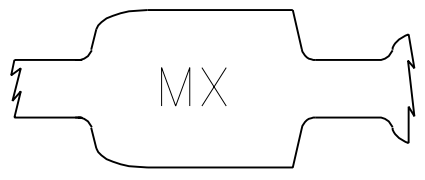
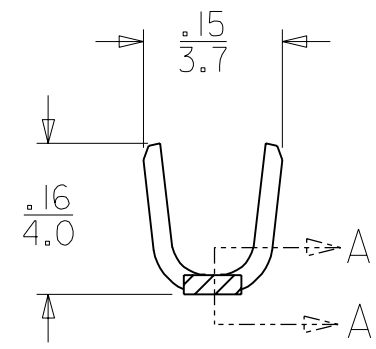
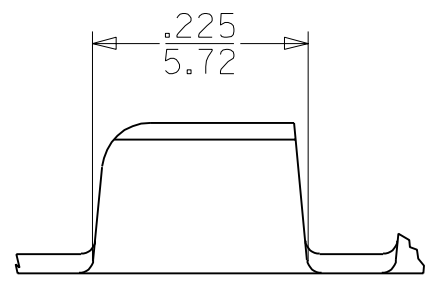
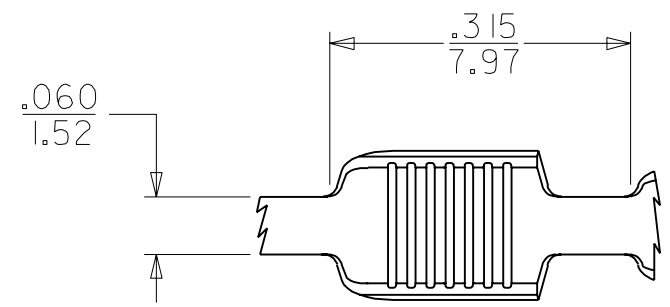
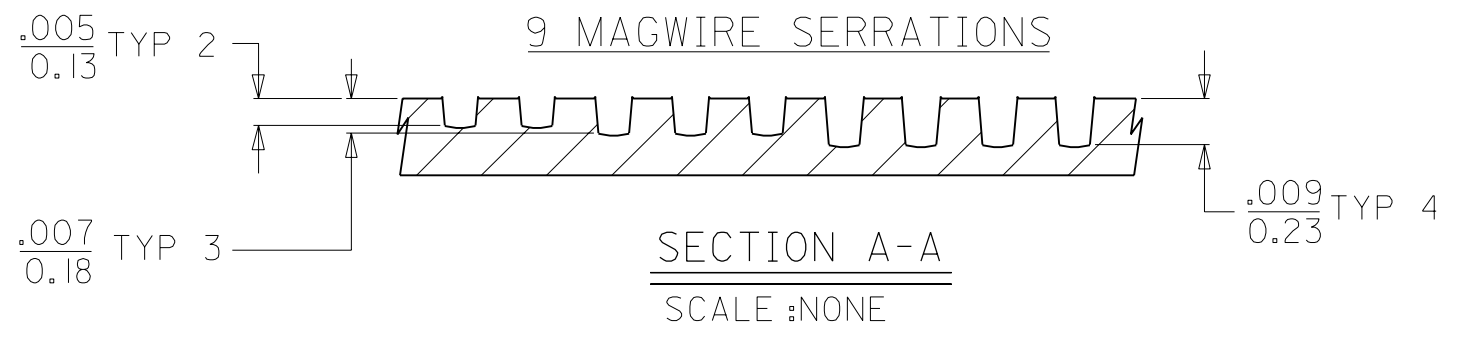
6 STANDARD SERRATIONS (B)



7 MAGWIRE SERRATIONS



9 MAGWIRE SERRATIONS



CUSTOMER DRAWING

VOIDS SD19303-40* EC NO. ETC2002-0155 DRWN:HEB 01/11/12 CHK:RWD 01/11/12 APPR:RWD 01/11/12	QUALITY SYMBOLS MAJOR $\nabla=0$ CRITICAL $\nabla C=0$	GENERAL TOLERANCES: (UNLESS SPECIFIED)		SCALE 5:1	DESIGN UNITS <input type="checkbox"/> mm <input checked="" type="checkbox"/> INCH	DIMENSIONS: <input type="checkbox"/> mm <input checked="" type="checkbox"/> INCH <input type="checkbox"/> mm ONLY	SHT REV		
		4 PLACES ± 0.0005 $\pm .0005$	3 PLACES ± 0.0005 $\pm .0005$	2 PLACES ± 0.0013 $\pm .001$	1 PLACE ± 0.0025 $\pm .0025$	DRAWN BY & DATE JH 97/08/29	TITLE: MINI MAGWIRE SPLICE 1500 TO 5000 CMA BRASS,STEEL,&STAINLESS		REVISE ON CAD ONLY
		ANGULAR: $\pm 1/2^\circ$		CHECKED BY & DATE RWD 97/08/29	APPROVED BY & DATE RWD 97/08/29	MOLEX INCORPORATED		SHEET NO. 1 OF 1	
		DRAFT WHERE APPLICABLE MUST REMAIN WITHIN DIMENSIONS		CAD FILENAME S19303400.DGN	MATERIAL NO. SEE CHART	DRAWING NO. SD-19303-400	SIZE B		