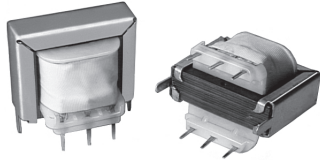


Low Power Transformers

Single Primary, Input 115 Volts

Dual Secondary: PL-11 thru -14, Single Secondary: PL-32 thru -34



FEATURES

- PC pin mounting
 - Provides isolation from power line
 - Mounting frames and bobbin standoff are available
 - Modification to these standard items are available as specialty products
 - Laminated construction for low-cost industrial applications, including power supplies, controls and instrumentation
 - **PL-11, PL-12, PL-13, PL-14:** Dual secondaries for **series connection** to obtain twice voltage with center tap or **parallel connection** for twice current rating
 - **PL-32, PL-33, PL-34:** Single secondary and lower cost construction.
- Recognized under the Component Program of Underwriters Laboratories, Inc., U.L. File E71961. For general purpose transformers (U.L. Standard 506).

ELECTRICAL SPECIFICATIONS

Input Voltage: 115V, 60Hz.

Output Power Rating:

- PL-11 = .75 VA.
- PL-12, PL-32 = 1.50VA.
- PL-13, PL-33 = 4.50VA.
- PL-14, PL-34 = 10.0VA.

Dielectric Strength: All models are 1500V, 60Hz from primary to secondary winding and all windings to core.

Temperature Class: Insulation Class A, + 105°C.

MECHANICAL SPECIFICATIONS

Terminals: Brass, solder coated.

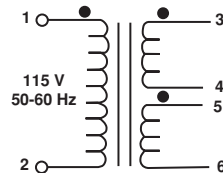
Weight: (reference)

- PL-11 = 35 grams.
- PL-12, PL-32 = 100 grams.
- PL-13, PL-33 = 160 grams.
- PL-14, PL-34 = 240 grams.

SCHEMATICS

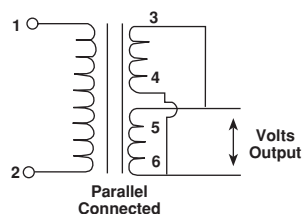
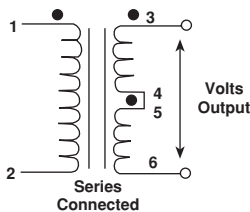
Basic Style

PL-11, PL-12, PL-13, PL-14

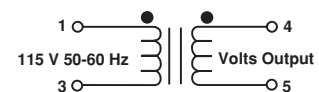


Options

PL-11, PL-12, PL-13, PL-14



PL-32, PL-33, PL-34

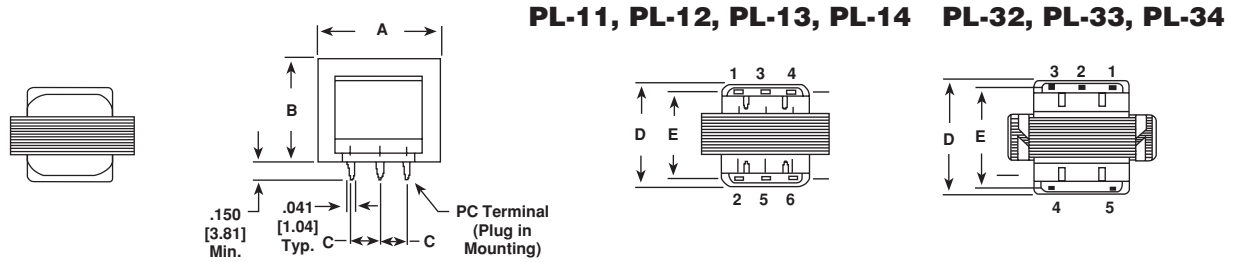




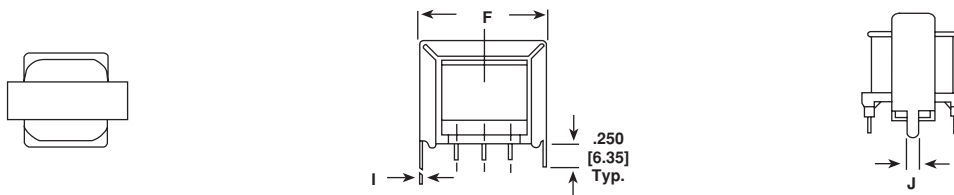
OUTPUT VOLTAGE TABLE							
MODEL	DUAL SECONDARY				SINGLE SECONDARY		
	OUTPUT VOLTAGE		OUTPUT CURRENT (mA)		MODEL	OUTPUT VOLTAGE	OUTPUT CURRENT (mA)
	SERIES	PARALLEL	SERIES	PARALLEL			
					PL-32-01 PL-33-01 PL-34-01	6.4 V	200 700 1300
PL-11-01 PL-12-01 PL-13-01 PL-14-01	8 VCT	4 V	94 188 562 940	188 376 1124 1880			
PL-11-02 PL-12-02 PL-13-02 PL-14-02	10 VCT	5 V	75 120 440 1000	150 240 880 2000	PL-32-02 PL-33-02 PL-34-02	10 V	120 450 800
PL-11-03 PL-12-03 PL-13-03 PL-14-03	12.6 VCT	6.3 V	60 100 350 800	120 200 700 1600	PL-32-03 PL-33-03 PL-34-03	12.6 V	100 350 650
PL-11-04 PL-12-04 PL-13-04 PL-14-04	15 VCT	7.5 V	50 100 300 500	100 200 600 1000	PL-32-04 PL-33-04 PL-34-04	15 V	80 300 550
PL-11-05 PL-12-05 PL-13-05 PL-14-05	16 VCT	8 V	47 75 260 640	94 150 520 1280			
PL-11-06 PL-12-06 PL-13-06 PL-14-06	20 VCT	10 V	38 60 220 500	76 120 440 1000	PL-32-05 PL-33-05 PL-34-05	20 V	60 225 400
PL-11-07 PL-12-07 PL-13-07 PL-14-07	24 VCT	12 V	31 50 180 450	62 100 360 900	PL-32-06 PL-33-06 PL-34-06	24 V	50 185 330
PL-11-08 PL-12-08 PL-13-08 PL-14-08	30 VCT	15 V	25 50 150 250	50 100 300 500	PL-32-07 PL-33-07 PL-34-07Z	30 V	40 150 270
PL-11-09 PL-12-09 PL-13-09 PL-14-09	34 VCT	17 V	22 35 125 300	44 70 250 600			
PL-11-10 PL-12-10 PL-13-10 PL-14-10	40 VCT	20 V	19 30 110 250	38 60 220 500			
PL-12-11 PL-13-11 PL-14-11	54 VCT	27 V	28 84 140	56 168 280	PL-32-08 PL-33-08 PL-34-08	54 V	22 80 150
PL-12-12 PL-13-12 PL-14-12	56 VCT	28 V	20 80 180	40 160 360			
PL-12-13 PL-13-13 PL-14-13	76 VCT	38 V	20 60 100	40 120 200	PL-32-09 PL-33-09 PL-34-09	76 V	16 60 110
PL-12-14 PL-13-14 PL-14-14	88 VCT	44 V	15 50 120	30 100 240	PL-32-10 PL-33-10 PL-34-10	88 V	14 50 90
					PL-32-11 PL-33-11 PL-34-11	115 V	10 40 70
PL-12-15 PL-13-15 PL-14-15	120 VCT	60 V	10 35 85	20 70 170			
PL-12-16 PL-13-16 PL-14-16	180 VCT	90 V	6 24 55	12 48 110	PL-32-12 PL-33-12 PL-34-12	180 V	7 25 45
PL-12-17 PL-13-17 PL-14-17	230 VCT	115 V	5 20 40	10 40 80	PL-32-13 PL-33-13 PL-34-13	230 V	5 20 35

DIMENSIONAL CONFIGURATIONS (Reference) [Numbers in brackets indicate millimeters]

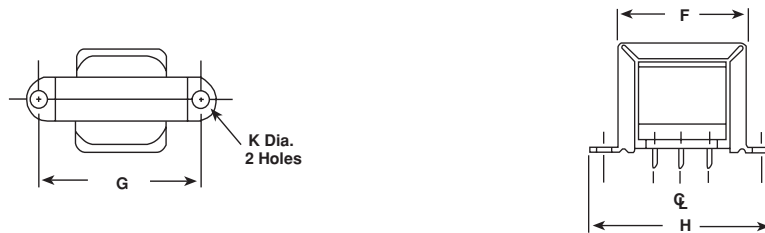
Basic Style



“A” Type of Mounting Frame



“B” Type of Mounting Frame

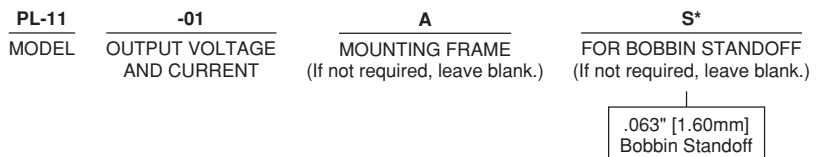


MODEL	A	B	C	D	E	F	G	H	I	J	K
PL-11	1.04 [26.42]	0.860 [21.84]	0.250 [6.35]	0.920 [23.37]	0.720 [18.29]	1.07 [27.18]	1.38 [35.05]	1.69 [42.93]	0.018 [0.457]	0.125 [3.18]	0.125 [3.18]
PL-12 PL-32	1.43 [36.32]	1.20 [30.48]	0.312 [7.92]	1.19 [30.23]	1.0 [25.40]	1.50 [38.10]	1.75 [44.45]	2.12 [53.85]	0.031 [0.787]	0.125 [3.18]	0.188 [4.78]
PL-13 PL-33	1.68 [42.67]	1.38 [35.05]	0.400 [10.16]	1.30 [33.02]	1.10 [27.94]	1.75 [44.45]	2.0 [50.80]	2.44 [61.98]	0.031 [0.787]	0.125 [3.18]	0.188 [4.78]
PL-14 PL-34	1.93 [49.02]	1.64 [41.66]	0.400 [10.16]	1.48 [37.59]	1.30 [33.02]	2.0 [50.80]	2.38 [60.45]	2.88 [73.15]	0.031 [0.787]	0.188 [4.78]	0.188 [4.78]

PART MARKING

- Dale
- Model
- Date code

ORDERING INFORMATION



*Standoff option not available on PL-11 size. **Note:** Special design not listed, available on request.



Notice

Specifications of the products displayed herein are subject to change without notice. Vishay Intertechnology, Inc., or anyone on its behalf, assumes no responsibility or liability for any errors or inaccuracies.

Information contained herein is intended to provide a product description only. No license, express or implied, by estoppel or otherwise, to any intellectual property rights is granted by this document. Except as provided in Vishay's terms and conditions of sale for such products, Vishay assumes no liability whatsoever, and disclaims any express or implied warranty, relating to sale and/or use of Vishay products including liability or warranties relating to fitness for a particular purpose, merchantability, or infringement of any patent, copyright, or other intellectual property right.

The products shown herein are not designed for use in medical, life-saving, or life-sustaining applications. Customers using or selling these products for use in such applications do so at their own risk and agree to fully indemnify Vishay for any damages resulting from such improper use or sale.