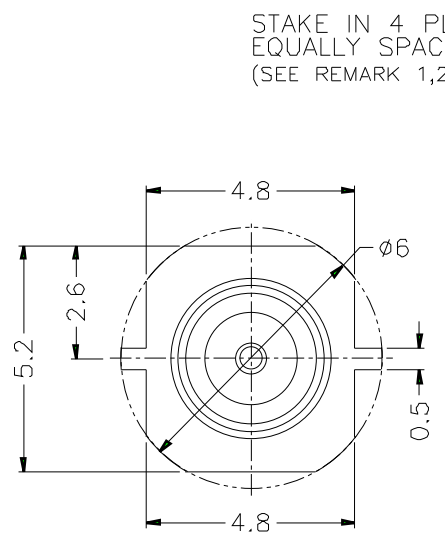
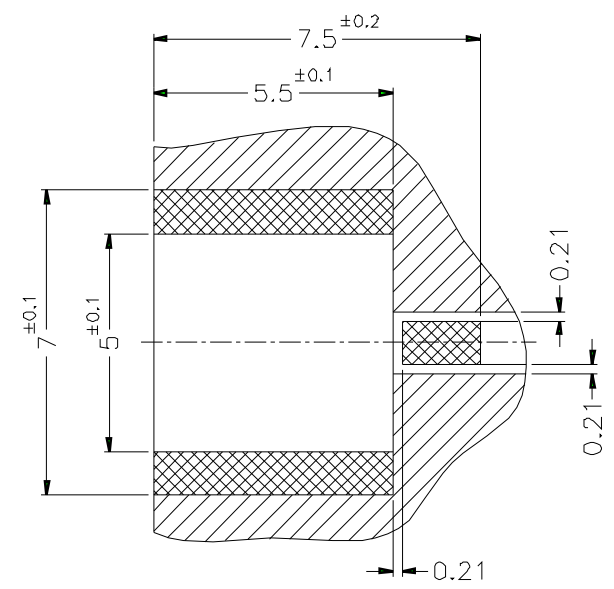
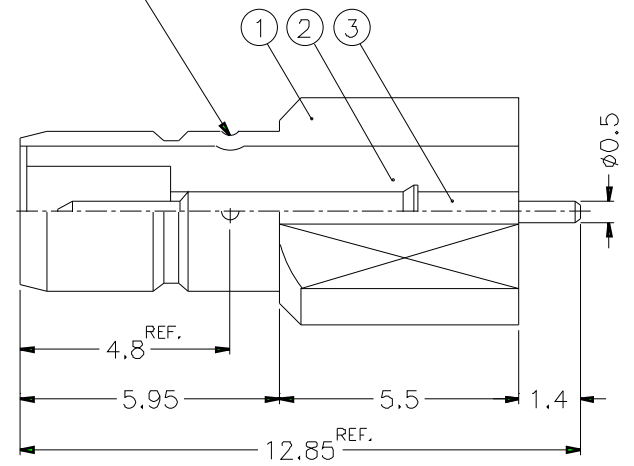


1			2			3			4			5			6			7			8		
REVISIONS																							
ISS	ZONE	DESCRIPTION\PER REQUEST\DATE																					



STAKE IN 4 PLACES
EQUALLY SPACED 90° APART
(SEE REMARK 1,2)



RECOMMENDED
MOUNTING HOLE

- REMARK:1. NO.2 MUST WITHSTAND A 4 lbs. MIN. PUSHOUT FORCE FROM NO.1 AFTER STAKING OPERATION
2. REMARK1 IS MAINTAINED BY STAMPING THE FOUR POINTS SHOWN ON THE DRAWING WITHOUT PUNCTURING NO.1

- NOTES: FINISH (PLATING THICKNESS IN MICRO-INCHES)
1. BRASS PER QQ-B-626
2. GOLD PL. 3 MIN. THICK OVER NICKEL PL. 100 MIN. THICK OVER COPPER STRIKE
3. GOLD PL. 30 MIN. THICK OVER NICKEL PL. 100 MIN. THICK OVER COPPER STRIKE
4. TEFLON MIL-P-19468

DIMENSIONS ARE IN MILLIMETERS				PART NO. SMB1251S1-3GT30G-50	
UNLESS OTHERWISE SPECIFIED TOLERANCES				APPROVED	DATE
0.5-6 = ±0.2					10-11-01'
6-30 = ±0.4				CHECKED	DATE
30-120 = ±0.6					10-11-01'
120-315 = ±1				DRAWN	DATE
315-1000 = ±1.6					10-11-01'
1000-2000 = ±2.4				FILE NO.	

<h1>Amphenol</h1>	
TITLE SMB SMT JACK FOR EDGE-CARD	
DRAWING NO.	
ITEM NO.	

3	CONTACT PIN	NOTE 1	NOTE 3	1	SMB1251S1-3
2	INSULATOR	NOTE 4	NATURAL	1	SMB1251S1-2T-50
1	BODY	NOTE 1	NOTE 2	1	SMB1251S1-1
NO.	DESCRIPTION	MATERIAL	FINISH	Q'TY	DRAWING NO.

SCALE	6/1	ISSUE	A	FILE NO.
-------	-----	-------	---	----------

1	2	3	4	5	6	7	8
---	---	---	---	---	---	---	---