

TC74HC4511P/F

T-67-21-57

TC74HC4511P/F BCD-TO-7 SEGMENT LATCH/DECODER/DRIVER

The TC74HC4511 is a high speed CMOS BCD-TO-7 SEGMENT LATCH/DECODER/DRIVER fabricated with silicon gate C²MOS technology. It enables high speed latch and decode operation with identical pin connection and function to standard CMOS 4511B.

The segment output driver, which is CMOS construction, has large I_{OH} capability which enables to drive cathode common LED directly.

When lamp test (\overline{LT}) is taken "L", all segment outputs will go to "H", and when blanking (\overline{BI}) is taken "L" and \overline{LT} is taken "H" all segment outputs will go to "L".

These functions are regardless of other inputs and used to test display.

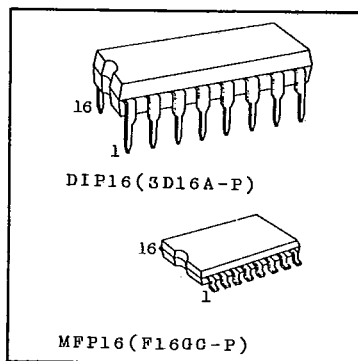
BI input is used to pulse-modulate the brightness of the display.

When error input code (over 10) is applied to BCD input, all segment outputs will go "L" (turn off).

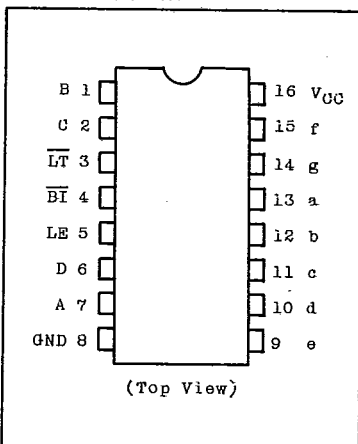
All inputs are equipped with protection circuits against static discharge or transient excess voltage.

FEATURES:

- . High Speed..... $t_w=15ns$ (Max.) at $V_{CC}=4.5V$
- . Low Power Dissipation..... $I_{CC}=4\mu A$ (Max.) at $T_a=25^\circ C$
- . High Noise Immunity..... $V_{NIH}=V_{NIL}=28\% V_{CC}$ (Min.)
- . Output Drive Capability.....10 LSTTL Loads
- . High Output Current..... $|I_{OH}|=20mA$
- . Wide Operating Voltage Range. $V_{CC(opr)}=2V \sim 6V$
- . Pin and Function Compatible with standard CMOS 4511B.



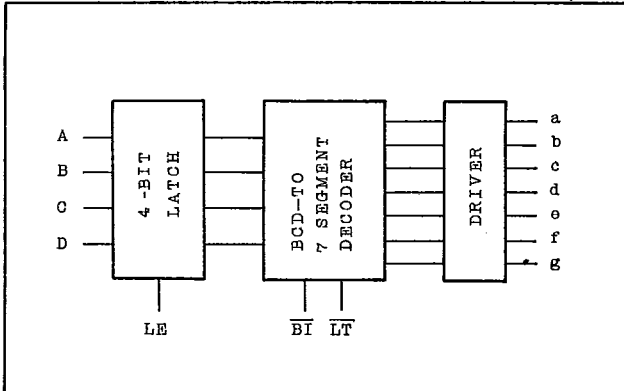
PIN ASSIGNMENT



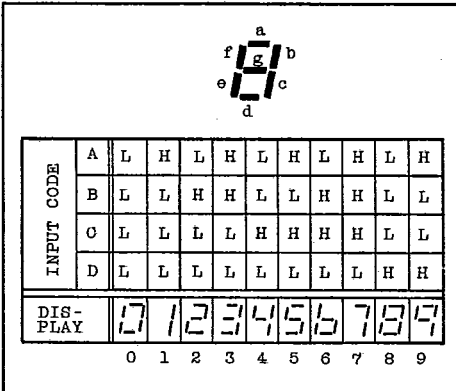
TC74HC4511P/F

T-67-21-57

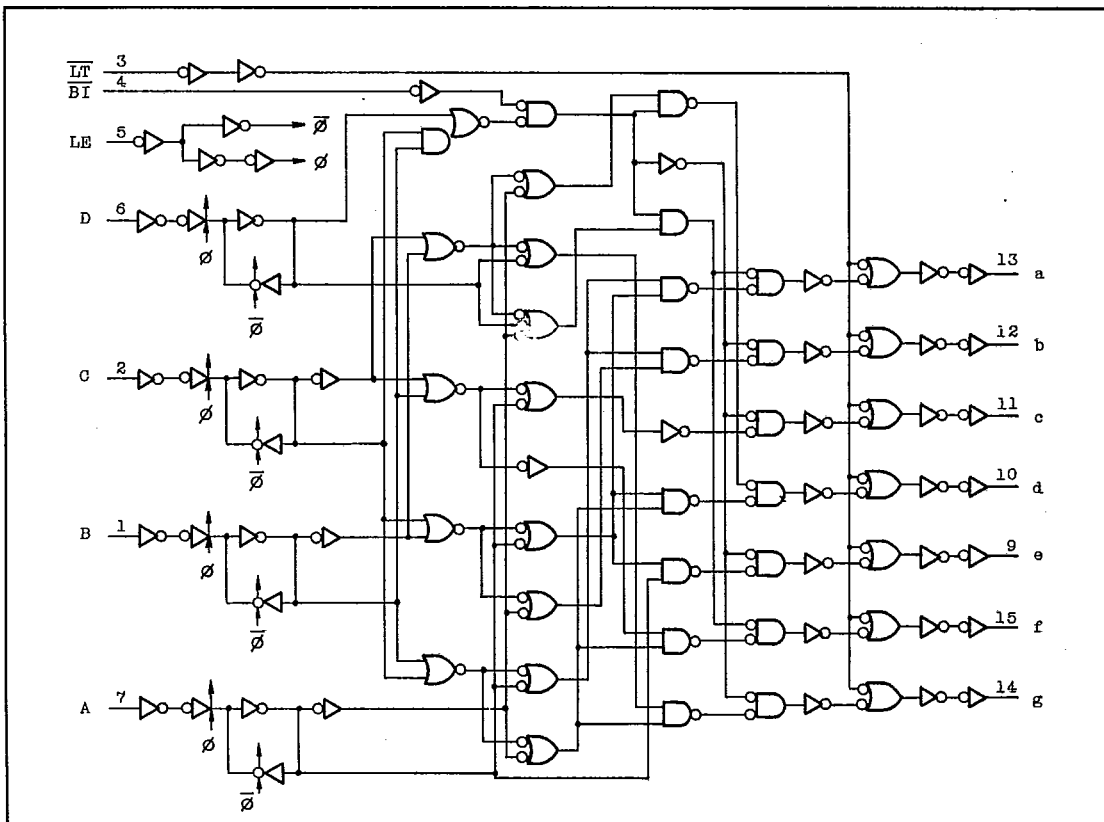
BLOCK DIAGRAM



DISPLAY MODE



LOGIC DIAGRAM



TC74HC4511P/F

T-67-21-57

TRUTH TABLE

INPUTS							OUTPUTS							DISPLAY MODE
LE	\overline{BI}	\overline{LT}	D	C	B	A	a	b	c	d	e	f	g	
X	X	L	X	X	X	X	H	H	H	H	H	H	H	8
X	L	H	X	X	X	X	L	L	L	L	L	L	L	BLANK
L	H	H	L	L	L	L	H	H	H	H	H	H	L	0
L	H	H	L	L	L	H	L	H	H	L	L	L	L	1
L	H	H	L	L	H	L	H	H	L	H	H	L	H	2
L	H	H	L	L	H	H	H	H	H	H	L	L	H	3
L	H	H	L	H	L	L	L	H	H	L	L	H	H	4
L	H	H	L	H	L	H	H	L	H	H	L	H	H	5
L	H	H	L	H	H	L	L	L	H	H	H	H	H	6
L	H	H	L	H	H	H	H	H	H	L	L	L	L	7
L	H	H	H	L	L	L	H	H	H	H	H	H	H	8
L	H	H	H	L	L	H	H	H	H	L	L	H	H	9
L	H	H	H	L	H	X	L	L	L	L	L	L	L	BLANK
L	H	H	H	H	X	X	L	L	L	L	L	L	L	BLANK
H	H	H	X	X	X	X	Hold the stage at the leading edge of LE							

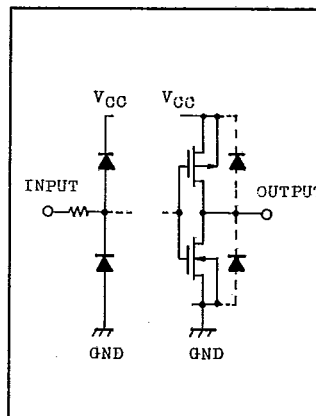
X: Don't care.

ABSOLUTE MAXIMUM RATINGS

PARAMETER	SYMBOL	VALUE	UNIT
Supply Voltage Range	V_{CC}	-0.5 ~ 7	V
DC Input Voltage	V_{IN}	-0.5 ~ $V_{CC}+0.5$	V
DC Output Voltage	V_{OUT}	-0.5 ~ $V_{CC}+0.5$	V
Input Diode Current	I_{IK}	± 20	mA
Output Diode Current	I_{OK}	± 20	mA
DC Output Current	I_{OUT}	+25/-35	mA
DC V_{CC} /Ground Current	I_{CC}	+150/-50	mA
Power Dissipation	P_D	500(DIP)*/180(MFP)	mW
Storage Temperature	T_{stg}	-65 ~ 150	°C
Lead Temperature 10sec	T_L	300	°C

* 500mW in the range of $T_a = -40^\circ\text{C} \sim 65^\circ\text{C}$.
and from $T_a = 65^\circ\text{C}$ up to 85°C derating factor of $-10\text{mW}/^\circ\text{C}$
shall be applied until 300mW.

INPUT and OUTPUT EQUIVALENT CIRCUIT



TC74HC4511P/F

T-67-21-57

RECOMMENDED OPERATING CONDITIONS

PARAMETER	SYMBOL	LIMIT	UNIT
Supply Voltage	V_{CC}	2 ~ 6	V
Input Voltage	V_{IN}	0 ~ V_{CC}	V
Output Voltage	V_{OUT}	0 ~ V_{CC}	V
Operating Temperature	T_{opr}	-40 ~ 85	°C
Input Rise and Fall Time	t_r, t_f	0 ~ 1000 ($V_{CC}=2.0V$) 0 ~ 500 ($V_{CC}=4.5V$) 0 ~ 400 ($V_{CC}=6.0V$)	ns

DC ELECTRICAL CHARACTERISTICS

PARAMETER	SYMBOL	TEST CONDITION	$T_a=25^\circ C$			$T_a=-40\sim 85^\circ C$		UNIT		
			V_{CC}	MIN.	TYP.	MAX.	MIN.		MAX.	
High-Level Input Voltage	V_{IH}		2.0	1.5	-	-	1.5	-	V	
			4.5	3.15	-	-	3.15	-		
			6.0	4.2	-	-	4.2	-		
Low-Level Input Voltage	V_{IL}		2.0	-	-	0.5	-	0.5	V	
			4.5	-	-	1.35	-	1.35		
			6.0	-	-	1.8	-	1.8		
High-Level Output Voltage	V_{OH}	$V_{IN}=V_{IH}$ or V_{IL}	$I_{OH}=-20\mu A$	2.0	1.9	2.0	-	1.9	-	V
				4.5	4.4	4.5	-	4.4	-	
				6.0	5.9	6.0	-	5.9	-	
			$I_{OH}=-6mA$	4.5	4.18	4.31	-	4.13	-	
			$I_{OH}=-20mA$	4.5	3.20	3.80	-	2.90	-	
Low-Level Output Voltage	V_{OL}	$V_{IN}=V_{IH}$ or V_{IL}	$I_{OL}=20\mu A$	2.0	-	0.0	0.1	-	0.1	V
				4.5	-	0.0	0.1	-	0.1	
				6.0	-	0.0	0.1	-	0.1	
		$I_{OL}=4mA$	4.5	-	0.17	0.26	-	0.33		
		$I_{OL}=5.2mA$	6.0	-	0.18	0.26	-	0.33		
Input Leakage Current	I_{IN}	$V_{IN}=V_{CC}$ or GND	6.0	-	-	± 0.1	-	± 1.0	μA	
Quiescent Supply Current	I_{CC}	$V_{IN}=V_{CC}$ or GND	6.0	-	-	4.0	-	40.0		

TC74HC4511P/F

T-67-21-57

AC ELECTRICAL CHARACTERISTICS ($C_L=50\text{pF}$, Input $t_r=t_f=6\text{ns}$)

PARAMETER	SYMBOL	TEST CONDITION	Ta=25°C				Ta=-40~85°C		UNIT
			VCC	MIN.	TYP.	MAX.	MIN.	MAX.	
Output Transition Time Low to High	t_{TLH}		2.0	-	25	60	-	75	ns
			4.5	-	6	12	-	15	
			6.0	-	5	10	-	13	
Output Transition Time High to Low	t_{THL}		2.0	-	30	75	-	95	
			4.5	-	8	15	-	19	
			6.0	-	7	13	-	16	
Propagation Delay Time (BCD-Segment)	t_{pLH} t_{pHL}		2.0	-	192	400	-	500	
			4.5	-	48	80	-	100	
			6.0	-	41	68	-	85	
Propagation Delay Time (BI - Segment)	t_{pLH} t_{pHL}		2.0	-	116	250	-	315	
			4.5	-	29	50	-	63	
			6.0	-	25	43	-	54	
Propagation Delay Time (LT - Segment)	t_{pLH} t_{pHL}		2.0	-	72	150	-	190	
			4.5	-	18	30	-	38	
			6.0	-	15	26	-	33	
Propagation Delay Time (LE - Segment)	t_{pLH} t_{pHL}		2.0	-	192	400	-	500	
			4.5	-	48	80	-	100	
			6.0	-	41	68	-	85	
Minimum Pulse Width (LE)	$t_w(L)$		2.0	-	30	75	-	95	ns
			4.5	-	8	15	-	19	
			6.0	-	7	13	-	16	
Minimum Data Set-up Time	t_s		2.0	-	35	75	-	95	
			4.5	-	9	15	-	19	
			6.0	-	8	13	-	16	
Minimum Data Hold Time	t_h		2.0	-	-	0	-	0	
			4.5	-	-	0	-	0	
			6.0	-	-	0	-	0	
Input Capacitance	C_{IN}		-	5	10	-	10	pF	
Power Dissipation Capacitance	$C_{PD}^{(1)}$		-	136	-	-	-		

Note (1) C_{PD} is defined as the value of internal equivalent capacitance of IC which is calculated from the operating current consumption without load (refer to Test Circuit).

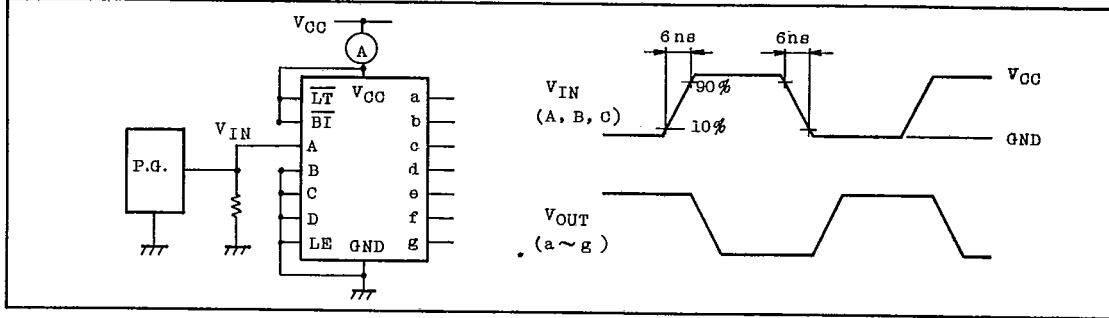
Average operating current can be obtained by the equation hereunder.

$$I_{CC(opr)} = C_{PD} \cdot V_{CC} \cdot f_{IN} + I_{CC}$$

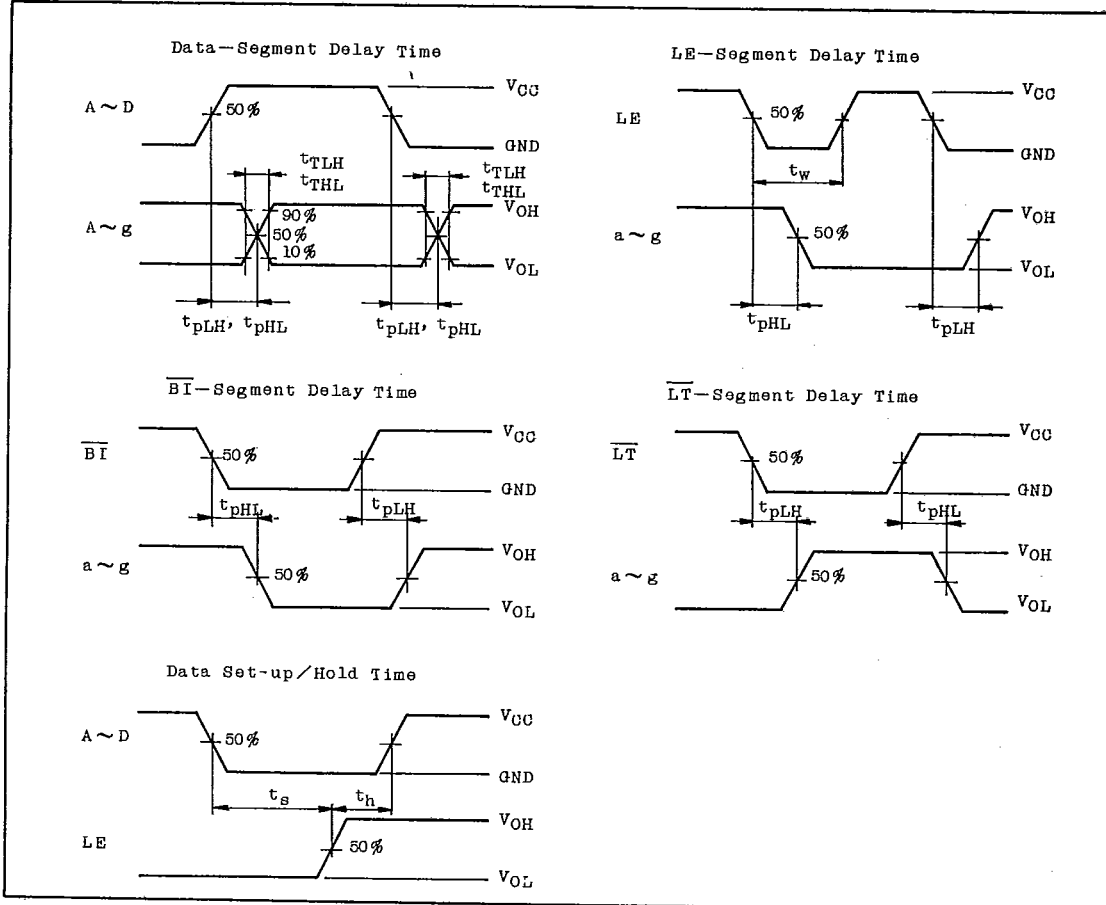
TC74HC4511P/F

T-67-21-57

I_{CC}(opr) TEST CIRCUIT



SWITCHING CHARACTERISTICS TEST WAVEFORM



TC74HC4511P/F

T-67-21-57

APPLICATION CIRCUIT

