



UL Recognized CSA Certified

Capacitance components enhance the filtering performance but may alter the signal as it passes through the RJ Jack. A low capacitance model allows additional filter performance without significant effect on the signal itself. Corcom's new LCT models provide improved performance over L models without impact on the signal. These parts are particularly suited for ethernet applications.

These models are available in shielded models only, with either panel or board ground.

Specifications

Contacts

Material:	Phosphor bronze
Plating:	50 microinches gold
Barrier underplating:	100 microinches nickel
Resistance:	
Initial:	20 milliohms maximum
After durability testing (500 mating cycles):	30 milliohms maximum

Capacitors

Type:	Monolithic ceramic chip
Standard value:	82 pF
Standard tolerance:	±20%

Ferrites

Type:	High resistivity, nickel zinc ceramic
Sleeves:	Single-aperature cylinders
Block:	Multi-aperature rectangular prism

Shield Material

Solder-plated copper alloy

Housing Material

Glass-filled polyester (UL94V-O)

Dielectric Withstanding Voltage

Line-to-line and line-to-ground	1000 VAC for 60 seconds
---------------------------------	----------------------------

Printed Circuit Board Retention

Before soldering:	1 lb. minimum
After soldering:	20 lb. minimum



Typical insertion loss in dB:

Line-to-ground (stop band) in a 50 ohm circuit

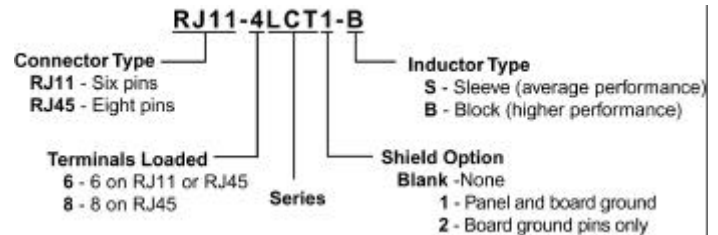
	Frequency-MHz							
	40	100	200	250	300	500	1000	
Ferrite Sleeves	8	12	27	50	38	25	20	
Ferrite Blocks	10	18	22	55	40	28	24	

Line-to-line (pass band) in a 50 ohm circuit

	Frequency-MHz							
	2	5	10	30	50	70	100	
Ferrite Sleeves	-	1.2	1.9	4	5	7	10	
Ferrite Blocks	1	2	3	5	8	10	13	

Ordering Information

Consult your local Corcom sales representative for pricing.



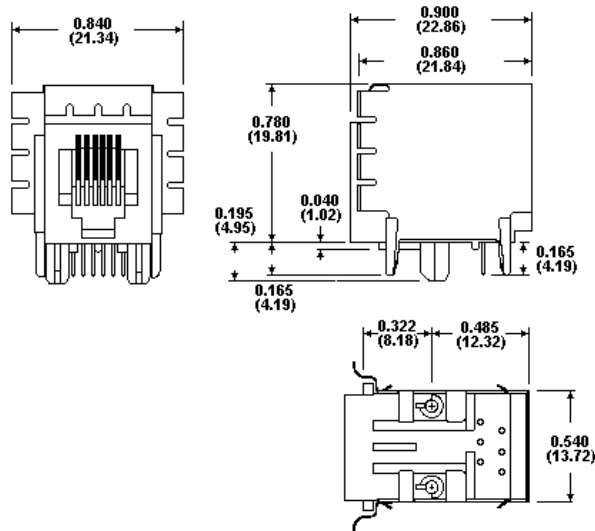
Available Part Numbers

RJ11-6LCT1-S	RJ45-8LCT1-S
RJ11-6LCT1-B	RJ45-8LCT1-B
RJ11-6LCT2-S	RJ45-8LCT2-S
RJ11-6LCT2-B	RJ45-8LCT2-B

LCT Series

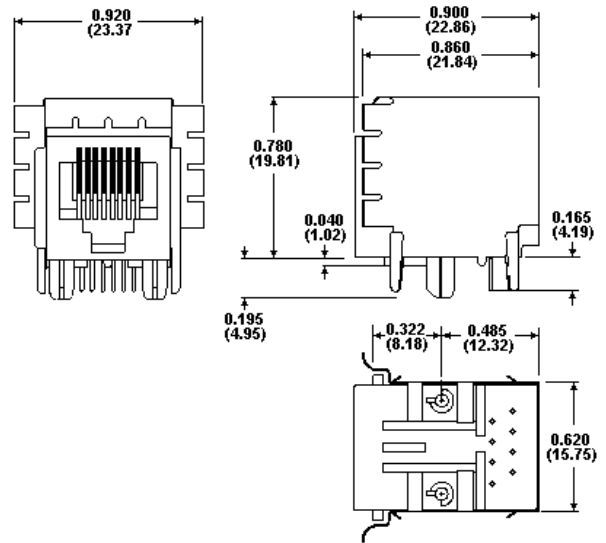
RJ11 (Style 1 Shield)

Model Dimension



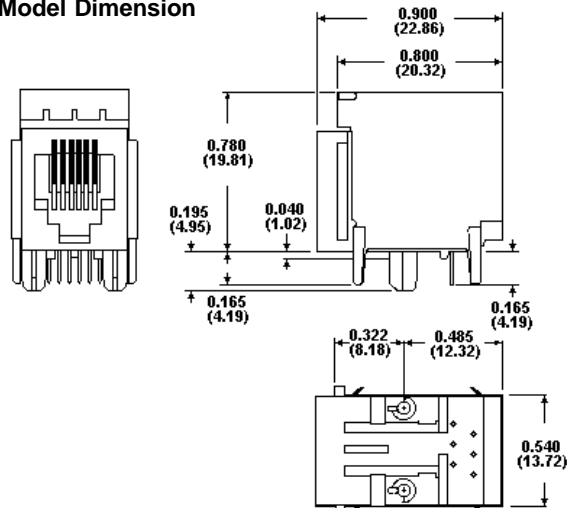
RJ45 (Style 1 Shield)

Model Dimension



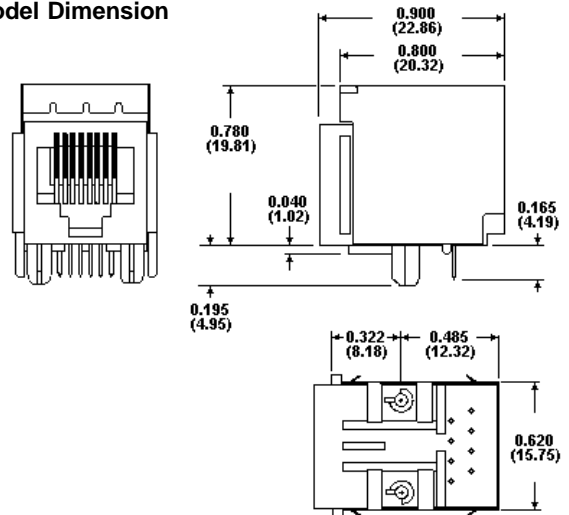
RJ11 (Style 2 Shield)

Model Dimension



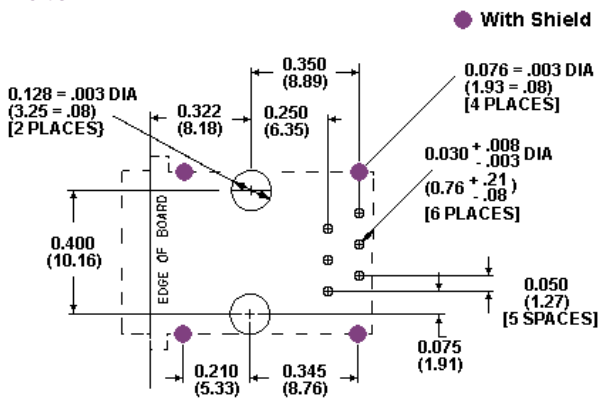
RJ45 (Style 2 Shield)

Model Dimension



PC Board Layout

RJ45



PC Board Layout

RJ45

