
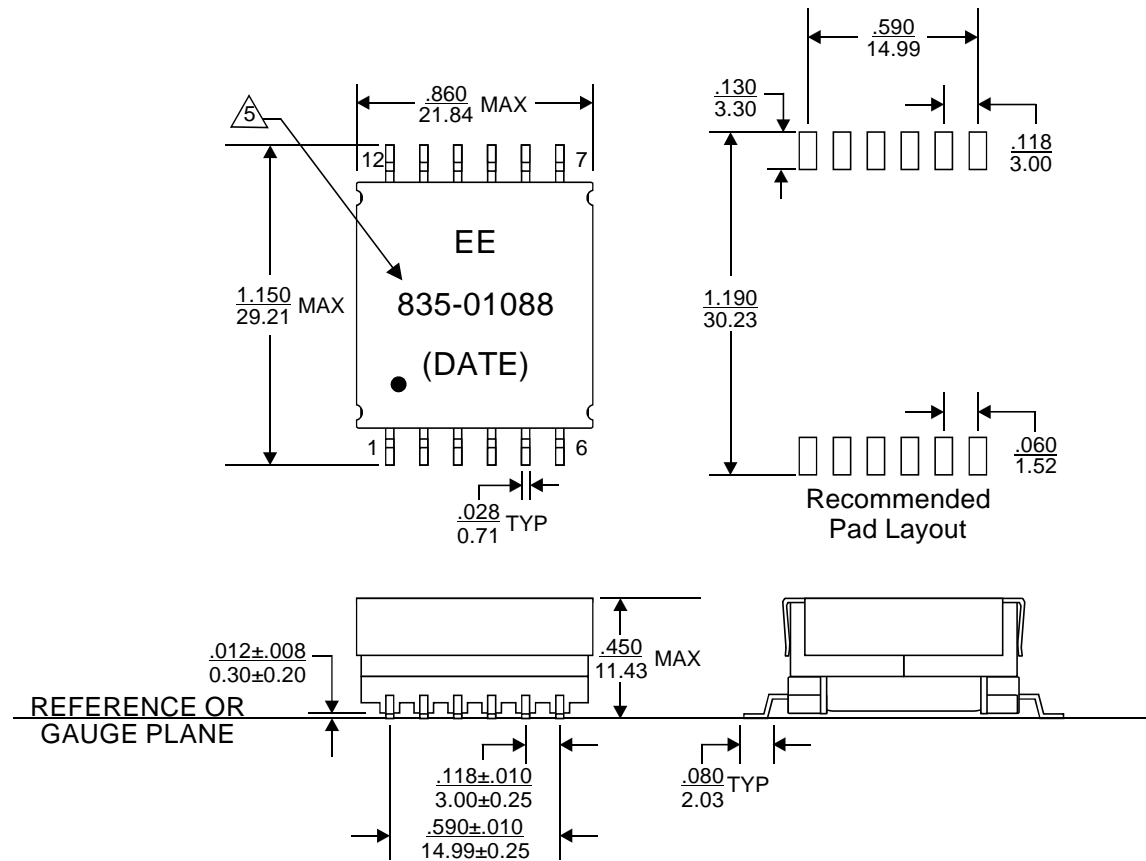


| REVISIONS |                                   |         |          |
|-----------|-----------------------------------|---------|----------|
| REV.      | DESCRIPTION                       | ECN NO. | DATE     |
| 01        | FIRST RELEASE FOR RFQ#A2009-11301 | N/A     | 02/03/09 |
|           |                                   |         |          |
|           |                                   |         |          |
|           |                                   |         |          |
|           |                                   |         |          |
|           |                                   |         |          |
|           |                                   |         |          |
|           |                                   |         |          |

**PAGE 4 IS FOR INTERNAL ONLY**

|   |  |   |           |                          |             |           |           |           |         |        |           |      |  |  |
|---|--|---|-----------|--------------------------|-------------|-----------|-----------|-----------|---------|--------|-----------|------|--|--|
| PART NUMBER   |  | PART DESCRIPTION  |           | TITLE                    |             |           |           |           |         |        |           |      |  |  |
| 835-01088   |  | Standard version, with Lead(Pb)   |           | TRANSFORMER, SMT, 12 PIN |             |           |           |           |         |        |           |      |  |  |
| 835-01088F  |  | RoHS compliant per EU Directive 2002/95/EC(without exemption of solder content) |           |                          |             |           |           |           |         |        |           |      |  |  |
| <p align="center"><b><u>WARNING !</u></b></p> <p>ALL SHEETS OF THIS DOCUMENT ARE CONTROLLED DOCUMENTATION AND ARE NOT TO BE RELEASED OUTSIDE OF E&amp;E OR ITS SUB-CONTRACTORS WITHOUT AUTHORIZATION.</p> | <p>UNLESS OTHERWISE SPECIFIED, DIMENSIONS ARE IN INCH/mm.</p> <p align="center"><u>TOLERANCE ARE:</u></p> <table border="0"> <tr> <td>INCH</td> <td>mm</td> <td>ANGLE</td> </tr> <tr> <td>.XXX ± .005</td> <td>.XX ± .13</td> <td>X.X ± 0.3</td> </tr> <tr> <td>.XX ± .02</td> <td>.X ± .5</td> <td>X. ± 1</td> </tr> </table> | INCH  | mm        | ANGLE                    | .XXX ± .005 | .XX ± .13 | X.X ± 0.3 | .XX ± .02 | .X ± .5 | X. ± 1 | APPROVALS | DATE |  E & E Magnetic Products Ltd. |  |
|   |  | INCH  | mm        | ANGLE                    |             |           |           |           |         |        |           |      |  |  |
|   |  | .XXX ± .005   | .XX ± .13 | X.X ± 0.3                |             |           |           |           |         |        |           |      |  |  |
|   |  | .XX ± .02   | .X ± .5   | X. ± 1                   |             |           |           |           |         |        |           |      |  |  |
|   |  | DRAWN BY  |           |                          |             |           |           |           |         |        |           |      |  |  |
| PROJ. ENG   | W.P. CHENG   | 02/03/09  |           | DRAWING NO./MODEL        | REV         |           |           |           |         |        |           |      |  |  |
| APPROVED BY   | W.P. CHENG   | 02/03/09  |           |                          |             |           |           |           |         |        |           |      |  |  |
| Q.A.  | V. TSUI  | 02/03/09  |           | 835-01088                | 01          |           |           |           |         |        |           |      |  |  |
|   | C.M. TSUI  | 02/03/09  |           |                          |             |           |           |           |         |        |           |      |  |  |
|   |  | SCALE   | PAGE      | OF                       |             |           |           |           |         |        |           |      |  |  |
|   |  | DO NOT SCALE  | 1         | 4                        |             |           |           |           |         |        |           |      |  |  |



## MECHANICAL OUTLINE

1. Dimension are specified in  $\frac{\text{inches}}{\text{mm}}$  with higher precedence in inches.
2. Unless otherwise specified, all tolerances are  $\pm \frac{.010}{0.25}$ .
3. Coplanarity:  $\frac{.005}{0.13}$  max.
4. "(DATE)" includes at least the manufacturing date code(in YYWW format) plus two character country code.
5. For RoHS compliant version, 835-01088F, the part will be marked with "835-01088F", instead of "835-01088".



E & E Magnetic Products Ltd.

DRAWING NO./MODEL

835-01088

REV

01

SCALE

DO NOT SCALE

PAGE

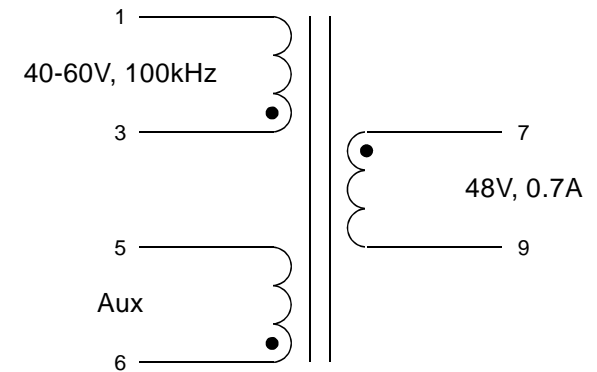
2

OF

4

**ELECTRICAL SPECIFICATION @25°C:**

| PARAMETERS                                | UNIT | LIMITS        |
|---|------|---------------|
| Turns Ratio(3-1):(7-9)                    | -    | 0.72 : 1 ± 2% |
| Turns Ratio(3-1):(6-5)                    | -    | 3.00 : 1 ± 2% |
| Polarity                                  | -    | Per Schematic |
| Inductance, Ls(3-1)@100kHz, 0.1Vrms, 0Adc | uH   | 35 ± 10%      |
| LL(3-1), short 7-9@100kHz, 0.1Vrms        | uH   | 0.70 Max      |
| DCR(3-1)                                  | Ω    | 0.047 Max     |
| DCR(7-9)                                  | Ω    | 0.165 Max     |
| DCR(6-5)                                  | Ω    | 0.167 Max     |
| HIPOT(1-3-5-6):(7-9)                      | Vrms | 1500 Min      |



**SCHEMATIC**

6. Operating temperature: 0°C to +70°C. The part temperature (ambient temperature + temperature rise) should not exceed the upper limit of the operating temperature under worst case operating conditions. Circuit design, component placement, PWB trace size and thickness, airflow and other cooling provisions all affect the part temperature. Part temperature should be verified in the end application.



**E & E Magnetic Products Ltd.**

|                   |      |     |
|-------------------|------|-----|
| DRAWING NO./MODEL |      | REV |
| 835-01088         |      | 01  |
| SCALE             | PAGE | OF  |
| DO NOT SCALE      | 3    | 4   |