
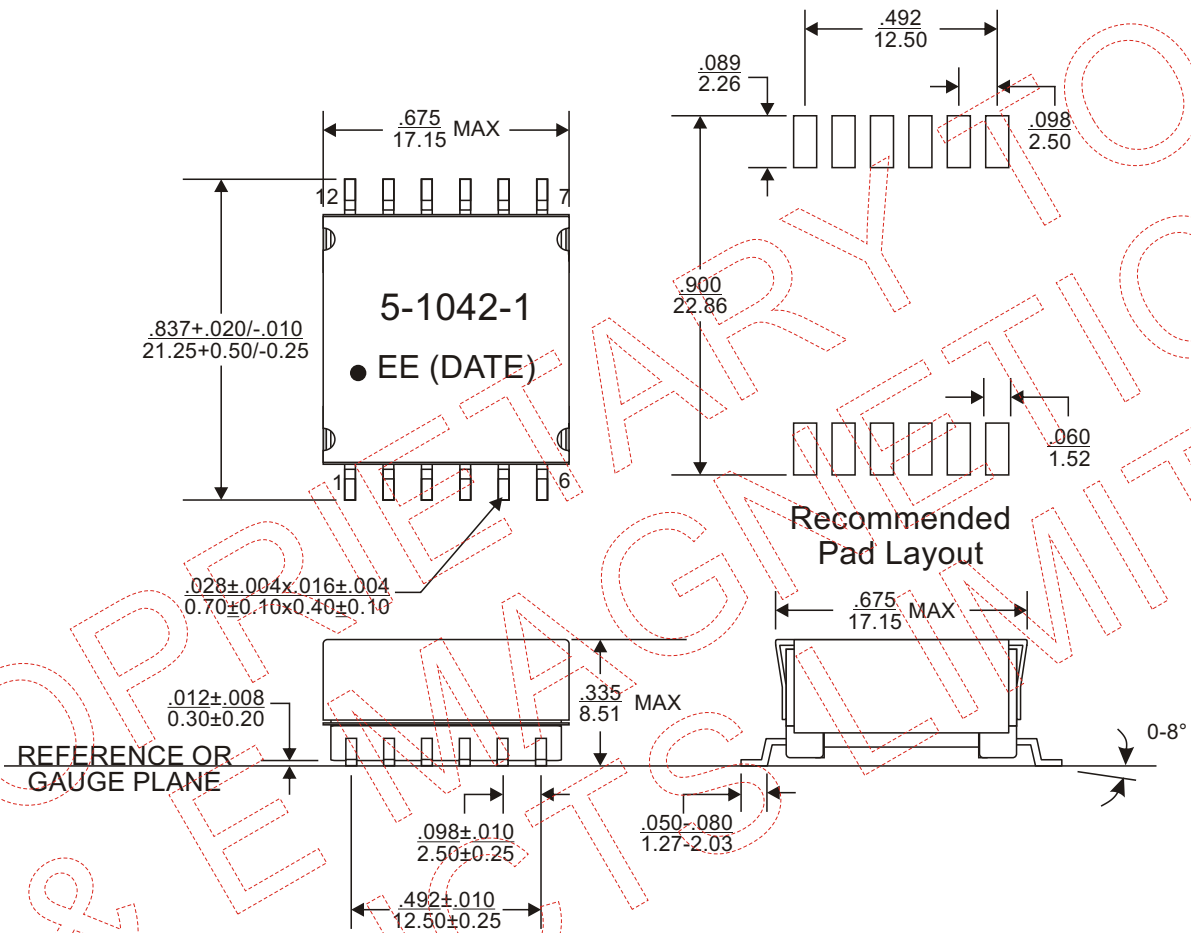


REVISIONS			
REV.	DESCRIPTION	ECN NO.	DATE
01	FIRST RELEASE FOR RFQ#A2014-13553.	N/A	07/29/14

PAGE 5 IS FOR INTERNAL ONLY

When ordering, please add suffix "T" to the part number for tape & reel packaging(13" reel).

PART NUMBER		PART DESCRIPTION		TITLE																						
835-01042-1F		RoHS compliant per EU Directive 2011/65/EU		PXFM, FLYBACK, EFD15, 12.28W, SMD, 12PIN																						
<p>WARNING!</p> <p>ALL SHEETS OF THIS DOCUMENT ARE CONTROLLED DOCUMENTATION AND ARE NOT TO BE RELEASED OUTSIDE OF E&E OR ITS SUB-CONTRACTORS WITHOUT AUTHORIZATION.</p>		UNLESS OTHERWISE SPECIFIED, DIMENSIONS ARE IN INCH/mm.		 E & E Magnetic Products Ltd.																						
		TOLERANCE ARE:		DRAWING NO./MODEL																						
		<table border="0"> <tr> <td>INCH</td> <td>mm</td> <td>ANGLE</td> </tr> <tr> <td>.XXX ± .005</td> <td>.XX ± .13</td> <td>X.X ± 0.3</td> </tr> <tr> <td>.XX ± .02</td> <td>.X ± .5</td> <td>X. ± 1</td> </tr> </table>		INCH	mm	ANGLE	.XXX ± .005	.XX ± .13	X.X ± 0.3	.XX ± .02	.X ± .5	X. ± 1	<table border="1"> <thead> <tr> <th>APPROVALS</th> <th>DATE</th> </tr> </thead> <tbody> <tr> <td>DRAWN BY S. HONG</td> <td>07/29/14</td> </tr> <tr> <td>PROJ. ENG S. HONG</td> <td>07/29/14</td> </tr> <tr> <td>APPROVED BY J. YANG</td> <td>07/29/14</td> </tr> <tr> <td>Q.A. D. LUO</td> <td>07/29/14</td> </tr> </tbody> </table>		APPROVALS	DATE	DRAWN BY S. HONG	07/29/14	PROJ. ENG S. HONG	07/29/14	APPROVED BY J. YANG	07/29/14	Q.A. D. LUO	07/29/14	REV	
		INCH	mm	ANGLE																						
		.XXX ± .005	.XX ± .13	X.X ± 0.3																						
.XX ± .02	.X ± .5	X. ± 1																								
APPROVALS	DATE																									
DRAWN BY S. HONG	07/29/14																									
PROJ. ENG S. HONG	07/29/14																									
APPROVED BY J. YANG	07/29/14																									
Q.A. D. LUO	07/29/14																									
<table border="0"> <tr> <td>SCALE</td> <td>PAGE</td> <td>OF</td> </tr> <tr> <td>DO NOT SCALE</td> <td>1</td> <td>5</td> </tr> </table>		SCALE	PAGE	OF	DO NOT SCALE	1	5	835-01042-1F		01																
SCALE	PAGE	OF																								
DO NOT SCALE	1	5																								



1. Dimension are specified in $\frac{\text{inches}}{\text{mm}}$ with higher precedence in inches.
2. Unless otherwise specified, all tolerances are $\pm \frac{.010}{0.25}$.
3. Coplanarity: $\frac{.004}{0.10}$ max.
4. "(DATE)" includes at least the manufacturing date code (in YYWW format) plus manufacturing site code.
5. Dimensions are to be measured in accordance with JEDEC standard 95-1.
6. The part can support lead free reflow soldering profile with maximum temperature of 260°C for 5 seconds max.

MECHANICAL OUTLINE

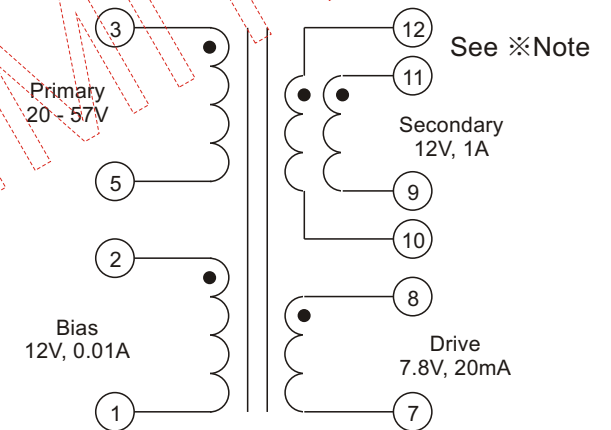


E & E Magnetic Products Ltd.

DRAWING NO./MODEL		REV
835-01042-1F		01
SCALE	PAGE	OF
DO NOT SCALE	2	5

ELECTRICAL SPECIFICATION @25°C:

PARAMETERS	UNIT	LIMITS
Turns Ratio(pri):(sec)	-	2.24 : 1 ± 2%
Turns Ratio(pri):(drive)	-	3.36 : 1 ± 2%
Turns Ratio(pri):(bias)	-	2.14 : 1 ± 2%
Polarity	-	Per Schematic
DCR(pri)	Ω	0.515 Max
DCR(sec)	Ω	0.110 Max
DCR(drive)	Ω	0.57 Max
DCR(bias)	Ω	0.88 Max
Inductance, Ls(pri)@100kHz, 0.1Vrms	μH	150 ± 10%
Inductance, Ls(pri)@100kHz, 0.1Vrms, 1.3Adc	μH	135 Min
LL(pri), short sec+drive@100kHz, 0.1Vrms	μH	2.0 Max
LL(drive), short sec@100kHz, 0.1Vrms	μH	0.4 Max
HIPOT(pri+bias):(sec+drive), 2mA, 2seconds	Vrms	500



SCHEMATIC

- Operating temperature: -40°C to +125°C. The part temperature (ambient temperature + temperature rise) should not exceed the upper limit of the operating temperature under worst case operating conditions. Circuit design, component placement, PWB trace size and thickness, airflow and other cooling provisions all affect the part temperature. Part temperature should be verified in the end application.
- The transformer is designed to meet functional insulation.
- For manufacturing, Pin 9 & 10, Pin 11 & 12 can be short or open. On customer's PCB, Pin 9 & 10 and Pin 11 & 12, shall be connected respectively. See ※Note.

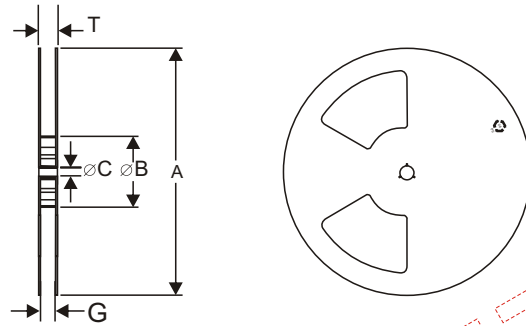


E & E Magnetic Products Ltd.

DRAWING NO./MODEL		REV
835-01042-1F		01
SCALE	PAGE	OF
DO NOT SCALE	3	5

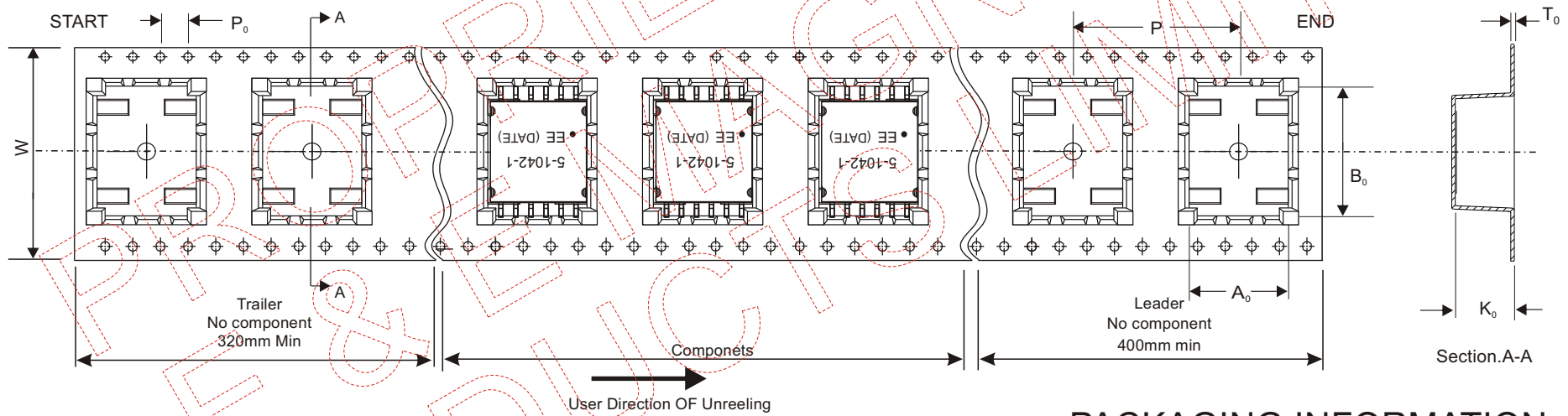
PACKAGING INFORMATION

(1) CONFIGURATION:(mm)



SYMBOL	A	B	C	G	T
DIM	330	100	13	32.4	37.2

(2) TAPE DIMENSIONS:(mm)



PACKAGING INFORMATION

SYMBOL	A_0	B_0	K_0	W	P	P_0	T_0
DIM	17.25 ± 0.10	21.65 ± 0.10	8.95 ± 0.10	32.0 ± 0.30 -0.00	24.00 ± 0.10	4.00 ± 0.10	0.50 ± 0.05



E & E Magnetic Products Ltd.

DRAWING NO./MODEL

835-01042-1F

REV

01

SCALE

DO NOT SCALE

PAGE

4

OF

5