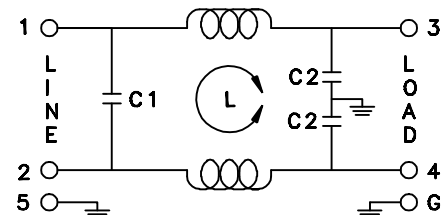
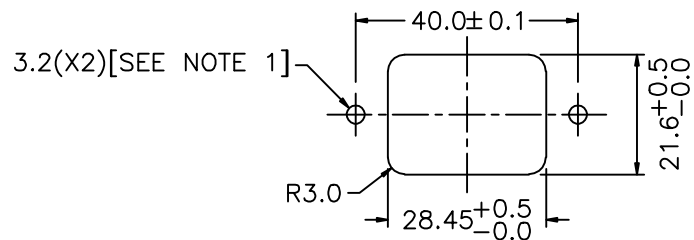


Maximum Leakage Current (L-G) @115VAC/60Hz	Maximum Leakage Current (L-G) @250VAC/50Hz	Min. common mode insertion loss (L-G) (dB in 50 ohm sys.) Freq. - MHz	
		.01 .05 .10 .15 .50 1.0 5.0 10 30	/ 12 18 20 25 30 38 40 40
0.2mA	0.4mA	Min. differential mode insertion loss (L-L) (dB in 50 ohm sys.) Freq. - MHz	
		.01 .05 .10 .15 .50 1.0 5.0 10 30	/ 1 2 4 12 18 38 40 40

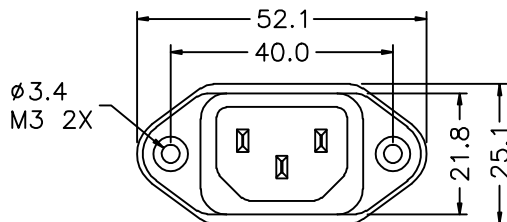
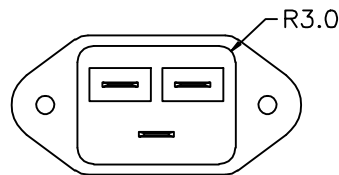
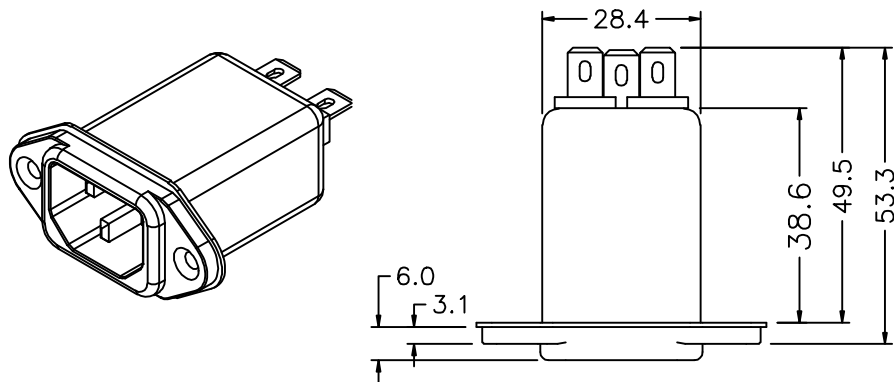


L: 2.5mH
C1: 0.1uF
C2: 2200pF

SUGGESTED MOUNTING CUTOUT
(MOUNTING FROM FRONT)



Note 1: Recommended diameter for thru-hole (screw/nut combination) hardware mounting method. Other methods will require holes with different dimensions and parameters.



THIS DOCUMENT AND ITS CONTENTS ARE THE PROPRIETARY CONFIDENTIAL PROPERTY OF INTERPOWER CORPORATION. NO USE OR COPIES MAY BE MADE WITHOUT WRITTEN PERMISSION FROM INTERPOWER CORPORATION.

DIMENSIONS IN MILLIMETERS		TITLE EMI FILTER	
DRAFT BY:	ATS/NWH	DATE:	04/24/08
DRAFTING APPROVAL:	JPC	DATE:	6/3/08
PART NUMBER:		83510353	
MATERIAL:		DO NOT SCALE	INTERPOWER CORPORATION
		SHEET 1 OF 1	

A	Add dimension information to cutout screw holes and Note 1.	3/28/12
REV	CHANGE DESCRIPTION	DATE