
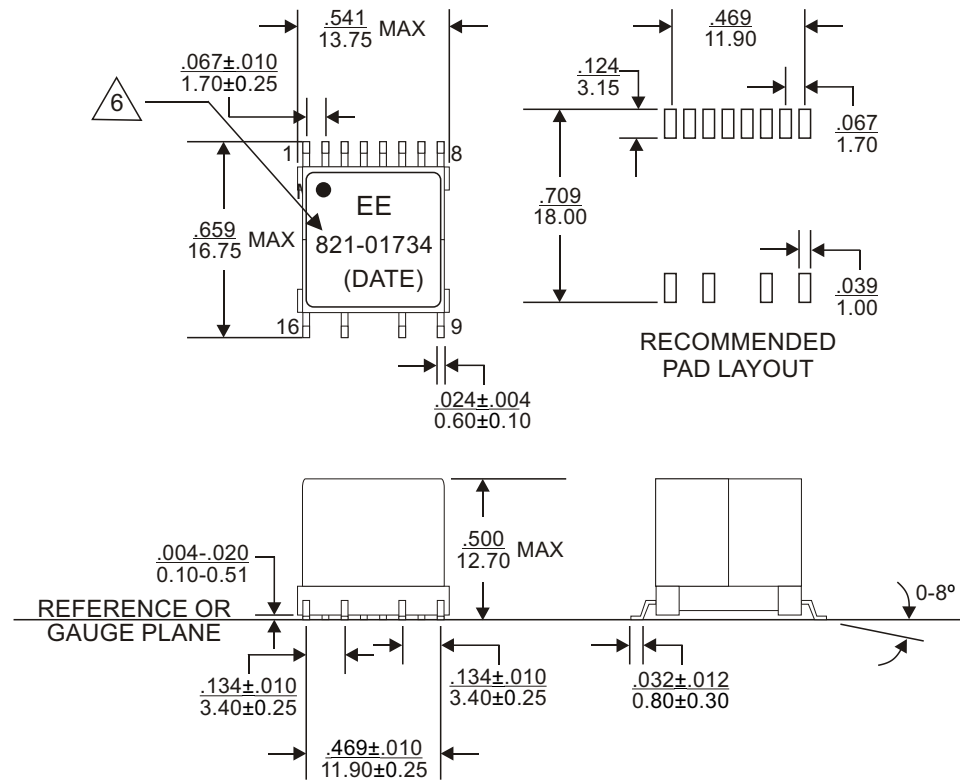


REVISIONS			
REV.	DESCRIPTION	ECN NO.	DATE
01	FIRST RELEASE FOR RFQ#D2004-5515	N/A	08/27/04
02	UPDATE DRAWING PER CUSTOMER SPECIFICATION	EE5567	09/03/04
03	UPDATE MECHANICAL SPECIFICATION	EE5599	09/09/04
04	ADD RoHS COMPLIANT VERSION INTO DRAWING FOR 821-01734	EE6575	05/17/05

PAGE 4 IS FOR INTERNAL USE

PART NUMBER		PART DESCRIPTION		TITLE										
821-01734		Standard version, with Lead(Pb)		TRANSFORMER, ADSL, SMT, 12 PIN, EXT. TEMP.										
821-01734F		RoHS compliant per EU Directive 2002/95/EC(without exemption of solder content)												
<p align="center">WARNING !</p> <p>ALL SHEETS OF THIS DOCUMENT ARE CONTROLLED DOCUMENTATION AND ARE NOT TO BE RELEASED OUTSIDE OF E&E OR ITS SUB-CONTRACTORS WITHOUT AUTHORIZATION.</p>	<p>UNLESS OTHERWISE SPECIFIED, DIMENSIONS ARE IN INCH/mm.</p> <p align="center">TOLERANCE ARE:</p> <table border="0"> <tr> <td>INCH</td> <td>mm</td> <td>ANGLE</td> </tr> <tr> <td>.XXX ± .005</td> <td>.XX ± .13</td> <td>X.X ± 0.3</td> </tr> <tr> <td>.XX ± .02</td> <td>.X ± .5</td> <td>X. ± 1</td> </tr> </table>	INCH	mm	ANGLE	.XXX ± .005	.XX ± .13	X.X ± 0.3	.XX ± .02	.X ± .5	X. ± 1	APPROVALS	DATE	 E & E Magnetic Products Ltd.	
		INCH	mm	ANGLE										
		.XXX ± .005	.XX ± .13	X.X ± 0.3										
		.XX ± .02	.X ± .5	X. ± 1										
		DRAWN BY												
PROJ. ENG	KEITH LI	05/17/05		DRAWING NO./MODEL	REV									
APPROVED BY	W.P. CHENG	05/17/05												
Q.A.	V. TSUI	05/17/05				821-01734	04							
	C.M. TSUI	05/17/05		SCALE	PAGE			OF						
				DO NOT SCALE	1	4								



1. Dimension are specified in $\frac{\text{inches}}{\text{mm}}$ with higher precedence in inches.
2. Unless otherwise specified, all tolerance are $\pm \frac{.010}{0.25}$.
3. Coplanarity: $\frac{.004}{0.10}$ max.
4. "(DATE)" includes at least the manufacturing date code(in YYWW format) plus two character country code.
5. Dimensions are to be measured in accordance with JEDEC standard 95-1.
6. For RoHS compliant version, 821-01734F, the part will be marked with "821-01734F", instead of "821-01734".

MECHANICAL OUTLINE



E & E Magnetic Products Ltd.

DRAWING NO./MODEL

821-01734

REV

04

SCALE

DO NOT SCALE

PAGE

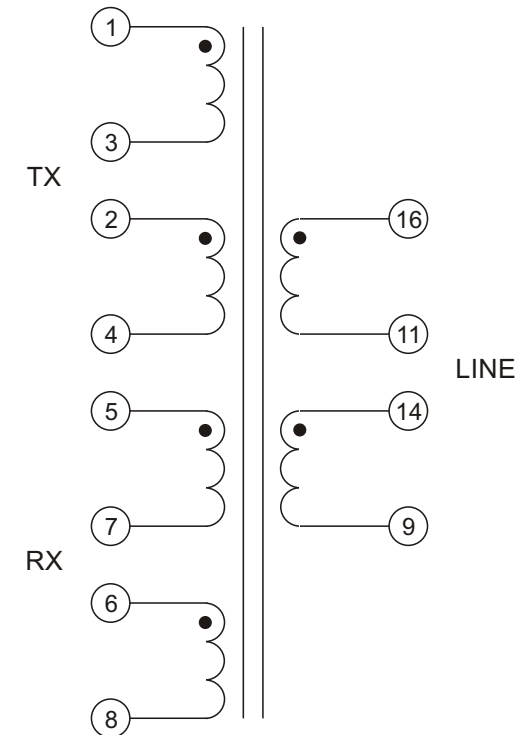
2

OF

4

ELECTRICAL SPECIFICATION @25 C:

PARAMETERS	UNIT	LIMITS
Inductance, Ls(9-16), tie 11+14@10kHz, 0.1Vrms	uH	700 ± 6%
Turns Ratio(1-4):(9-16), tie 2+3, 11+14	-	1 : 4 ± 1%
Turns Ratio(5-8):(9-16), tie 6+7, 11+14	-	1 : 2 ± 1%
Polarity	-	Per Schematic
THD@100kHz, 15Vp-p at line side	dB	- 90 Max
LL(1-4), with 5-16 and 2,3 shorted@100kHz, 0.1Vrms	uH	3 Nom.
LL(5-8), with 6,7 and 1-4 and 9-16 shorted@100kHz, 0.1Vrms	uH	7 Nom.
LL(9-16) with 1-8 and 11,14 shorted	uH	32 Max
Longitudinal Balance(9-16) to (5-8), with 6,7and 11,14 shorted @30kHz-1104kHz	dB	40 Min
DCR(9-16), tie 11+14, for reference only		3.5 Max
DCR(1-4), tie 2+3, for reference only		0.98 Max
DCR(5-8), tie 6+7, for reference only		1.74 Max
Cww(1-4):(9-16), tie 2+3,11+14@100kHz, 0.1Vrms	pF	25 Nom
Cww(5-8):(9-16), tie 6+7,11+14@100kHz, 0.1Vrms	pF	25 Nom
HIPOT(1):(16), tie 2+3, 4+5, 6+7, 11+14, 1 second	Vrms	1875 Min



SCHEMATIC

7. Operating temperature: -40°C to +85°C.
8. The transformer is designed to reflect 100 ohms at line side Tx side loaded with 5.6 ohms and Rx side loaded with 300 ohms.
9. The transformer is designed to meet UL60950 supplementary insulation requirements for working voltage up to 250Vrms.



E & E Magnetic Products Ltd.

DRAWING NO./MODEL		REV
821-01734		04
SCALE	PAGE	OF
DO NOT SCALE	3	4