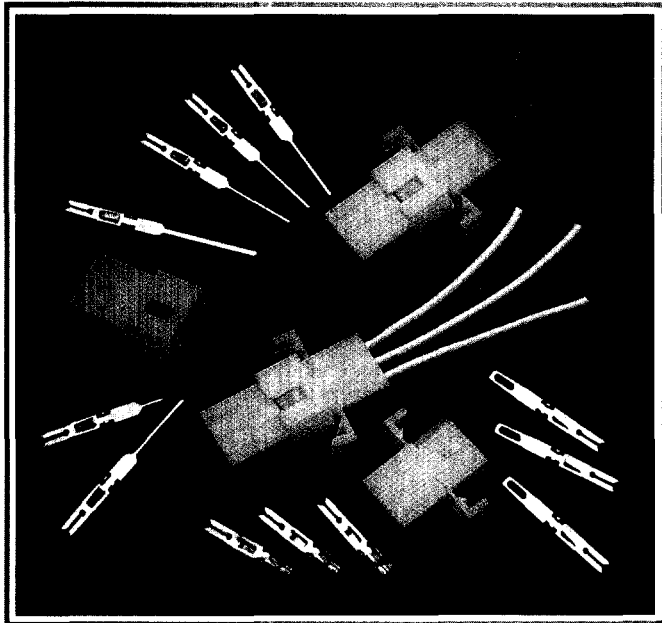


EDACON CONNECTOR



FEATURES

- UL Recognized
- .156 (3.96) Contact Spacing
- Plug and Receptacle in 3, 4, or 6 Contact Sizes
- Edacon Hermaphroditic Contact Mating Design
- Contact Termination Options include Crimp, P.C. Tail, Wire Hole, Wire Wrap and Taper Tail
- Tools Available for Contact Installation, Removal and Crimping

SPECIFICATIONS

- ◆ Circuit board substrate available in 94V-0
- ◆ Insulator Material: White Nylon
- ◆ Contact Material: Phosphor Bronze Alloy CA-510
- ◆ Contact Plating: Gold over Nickel for Entire Contact
- ◆ Current Rating: 8.5 Amperes
- ◆ Contact Resistance: 10 Milliohms Maximum
- ◆ Dielectric Withstanding Voltage: 2000 V AC rms at Sea Level
- ◆ Insulation Resistance: 5000 Megohms Minimum
- ◆ Operating Temperature: -65 to +125 Degrees C
- ◆ Insertion and Withdrawal Force: 2 to 16 oz (0.56 to 4.45 N) per Contact Position

556 SERIES ORDERING CODE

Example Part Number **556 - 003 - 500 - 102**

Series _____
 Total Number of Contacts _____
 Contact Code _____
 Style _____

Series 556

Total Number of Contacts

003, 004 or 006

Contact Code ^{1,2}	Description & Tail Size	Tail Length "G"	
000	No Contacts Assembled		
500	Wire Hole .110 x .024 (2.79 x 0.61)	.245	(6.22)
501	Taper Tail	.245	(6.22)
520	P.C. Tail .025 x .024 (0.64 x 0.61)	.215	(5.46)
540	Wire Wrap .050 x .024 (1.27 x 0.61)	.600	(15.24)
541	Wire Wrap .026 x .024 (0.66 x 0.61)	.620	(15.75)
542	Wire Wrap .050 x .024 (1.27 x 0.61)	.790	(20.07)

Style and Material³

Style	Style
101	Plug
201	Receptacle
202	Receptacle with Panel Retention

Ordering Code Notes

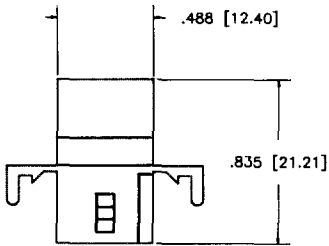
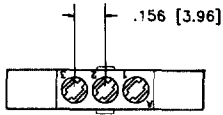
- 1) Crimp contacts are also available for the 556 series connectors. Contacts may be ordered separately for pre-wired or select position assembly.

Part Number	Description	Silhouette
516-290-500	Wire Hole	
516-290-501	Taper Tail	
516-290-520	P.C. Tail	
516-290-540	Wire Wrap	
516-290-541	Wire Wrap	
516-290-542	Wire Wrap	
516-290-590	Crimp - Loose	
516-290-591	Crimp - 1800 Contacts per reel	

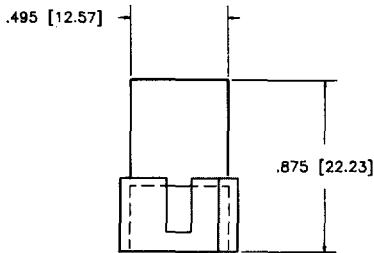
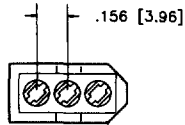
- 2) For contact installation, removal and crimping tools, refer to page 112.
- 3) Insulator design prevents improper mating of individual plug and receptacle.

EDACON CONNECTOR

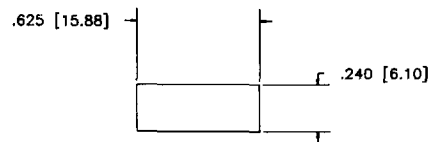
MALE CONNECTOR
(Hermaphroditic contacts)



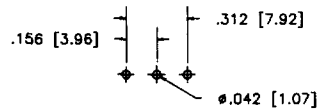
FEMALE CONNECTOR
(Hermaphroditic contacts)



**RECOMMENDED
PANEL OPENING
(If Desired)**



**RECOMMENDED
BOARD LAYOUT**



CONNECTOR MATING FACE VIEWS

