

DO NOT SCALE

THIS DRAWING AND DESIGN HEREON CONSTITUTES A PROPRIETARY DESIGN OF PACKARD ELECTRIC DIVISION AND IS NOT TO BE DUPLICATED OR REPRODUCED WITHOUT AUTHORITY OF PACKARD ELECTRIC DIVISION

STRIP - .22

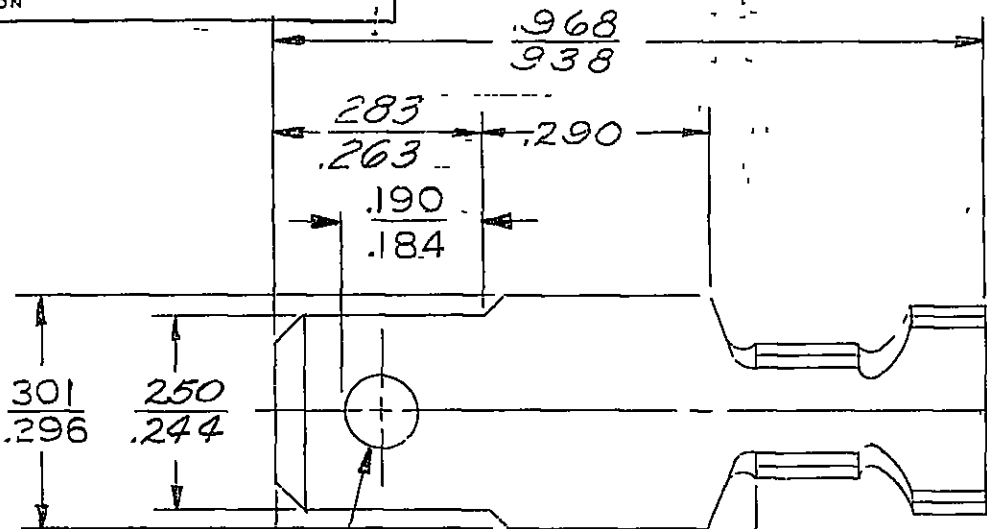
DEDUCT - .62

PART NO.

2977398

SIZE

A

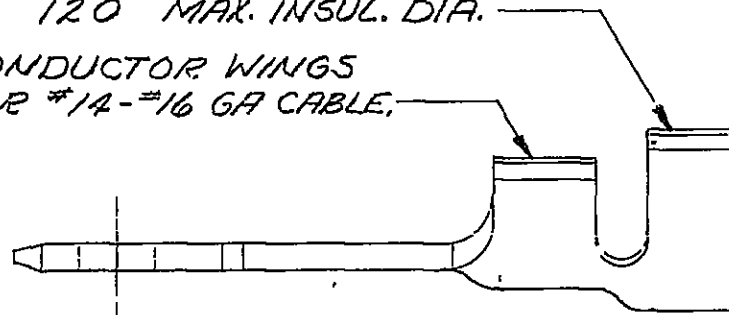


.090 DIA. HOLE
.096

ASSEM. DIMENSIONING POINT

INSULATION WINGS FOR
120 MAX. INSUL. DIA.

CONDUCTOR WINGS
FOR #14-#16 GA CABLE.



C02D1665

OUTLINE DRAWING

DATE	SYN	REVISION RECORD	C/N NO
10-25-61	∞	.250/.244 WAS .252/.244	6572
12-22-62	∞	.283/.263 WAS .273	10617
		.090/.096 WAS .093	
		D. WAS C.	
5-8-69	∞	.190/.184 WAS .187±.005	35343
		.301/.296 WAS 296±.005	

CODE NO 6900

TOLERANCE UNLESS OTHERWISE SPECIFIED

DECIMAL ± .005

FRACTIONAL

ANGULAR ± 2°

DWG DATE 4-25-61

SCALE NONE

DR K. COPE

ROUTING

DEPT

OUTST

REFERENCE

2973998-D

CK Peace 4-25

APPR

APPR

APPR

5-10-61 4-25-61

MATERIAL SPEC

.032 BRASS

CODE NO

NAME

TERMINAL-MALE
FOR #14-#16 GA. CABLE

PART NO

2977398

SIZE

A

PACKARD ELECTRIC DIVISION
GENERAL MOTORS CORPORATION
WARREN, OHIO

O
M
804
1046
1119
C1154A
FB-V
16A
PEBA
26A
63R
74R
300R
320R
330R
350R
952R
300R
952T-R

99
3000 R
3100 R
3200 R