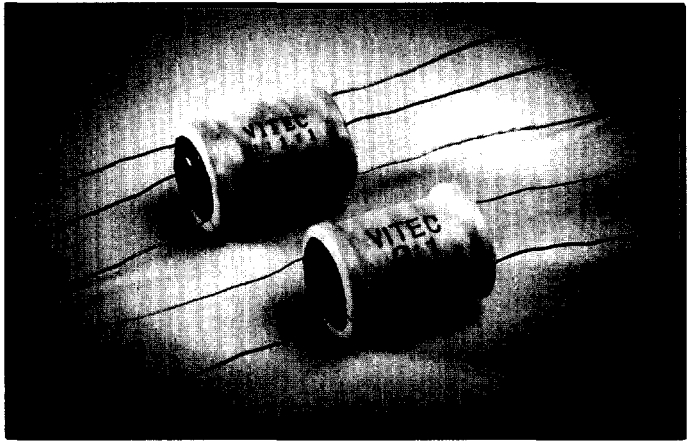


TYPE 11Z

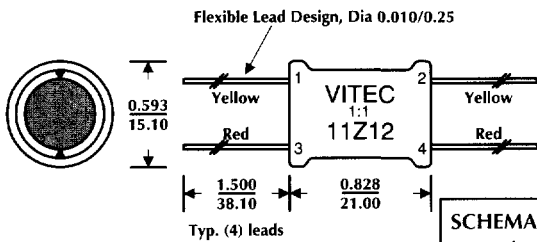
TRIGATE™ PULSE TRANSFORMERS DESIGNED FOR LOW COST SCR TRIGGERING APPLICATIONS

FEATURES

- Designed for low cost SCR triggering applications including motor speed controls, heater controls, and incandescent lighting controls.
- Designed with flexible leads.
- Balanced pulse characteristics and energy transfer from the primary to secondary and tertiary windings.
- Minimum saturation effect to allow operations where increased pulse widths are required.
- Fast pulse rise time and increased current capability to prevent SCR failure.
- Increased energy transfer efficiency.
- Operating temperature -10°C to +70°C.



CASE STYLE 1

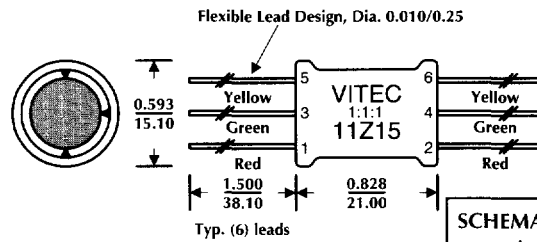


SCHEMATIC



Dimensions Inches/mm +/- 0.01" Unless noted

CASE STYLE 2



SCHEMATIC



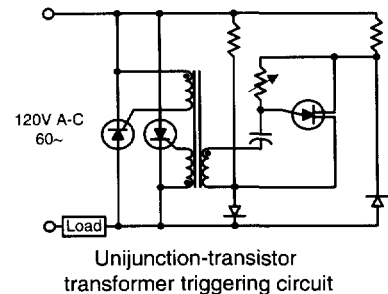
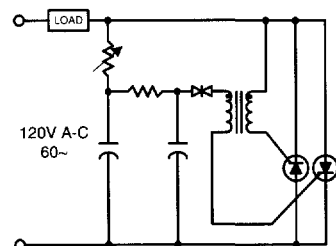
Dimensions Inches/mm +/- 0.01" Unless noted

ELECTRICAL CHARACTERISTICS @ +25°C

| Part Number | Turns Ratio | LP | LI | CC | DCR | Dielectric Test @60CY | AC Line Voltage @60CY | Case Style |
|-------------|-------------|------|------|------|---------|-----------------------|-----------------------|------------|
| | | μH | μH | pF | Ohm | | | |
| | | MIN | MAX | MAX | MAX | | | |
| 11Z12 | 1:1 | 200 | 3 | 800 | 1.5-1.5 | 1600 | 240 | 1 |
| 11Z13 | 1:1:1 | 200 | 3 | 800 | 2-2-2 | 1600 | 240 | 2 |
| 11Z14 | 2:1 | 1000 | 10 | 1300 | 10-2 | 1600 | 240 | 1 |
| 11Z15 | 2:1:1 | 1000 | 15 | 1300 | 10-2-2 | 1600 | 240 | 2 |
| 11Z16 | 5:1 | 5000 | 1500 | 400 | 19-3 | 1600 | 240 | 1 |

Notes:

TYPICAL APPLICATION



VITEC