

QUAD HIGH SPEED MICROPOWER TIMER

GENERAL DESCRIPTION

The ALD4501 timer is a high performance QUAD monolithic timing circuit built with advanced silicon gate CMOS technology. It offers the benefits of high input impedance, thereby allowing smaller timing capacitors and longer timing cycle; high speed, with typical cycle time of 500ns; low power dissipation for battery operated environment; reduced supply current spikes, allowing smaller and lower cost decoupling capacitors. The four timers are each capable of being independently operated in the monostable, astable or 50% duty cycle mode.

Each timer is capable of producing accurate time delays and oscillations in both monostable and astable operation. It operates in the one-shot (monostable) mode or 50% duty cycle free running oscillation mode with a single resistor and one capacitor. The inputs and outputs are fully compatible with CMOS, NMOS or TTL logic.

There are three matched internal resistors (approximately 200K Ω each) that set the threshold and trigger levels at two-thirds and one-third respectively of V_{DD} . These levels can be adjusted by using the control terminal. When the trigger input is below the trigger level, the output is in the high state and sourcing 2mA. When the threshold input is above the threshold level at the same time the trigger input is above the trigger level, the internal flip-flop is reset, the output goes to the low state and sinks up to 10mA. The reset input overrides all other inputs and when it is active (reset voltage less than 1V), the output is in the low state. All four timers share the same control and reset pins so that timing functions are synchronized.

FEATURES

- High speed operation - 2 MHz typical oscillation at 5V
- Each discharge output sinking current: 40mA at 5V
- Guaranteed low operating supply voltage of 2 to 12V
- Each timer is functionally equivalent to NE555 with greatly expanded high and low frequency ranges
- High speed, low power, monolithic CMOS technology
- Low supply current 150 μ A typical
- Extremely low trigger, threshold and reset currents - 10pA typical
- Operates in both monostable and astable modes
- Fixed 50% duty cycle or adjustable duty cycle
- CMOS, NMOS and TTL compatible input/output
- Low supply current spikes

ORDERING INFORMATION

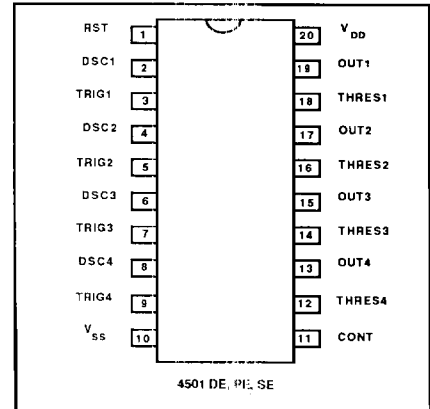
Operating Temperature		
-55 $^{\circ}$ C to +125 $^{\circ}$ C	0 $^{\circ}$ C to +70 $^{\circ}$ C	0 $^{\circ}$ C to +70 $^{\circ}$ C
20 Pin	20 Pin	20 Pin
CERDIP Package	Plastic DipPackage	SOIC Package
ALD 4501 DE	ALD 4501 PE	ALD 4501 SE
	ALD 4501 Z (Dice)	

Advanced Linear Devices, inc. cannot assume liability for use of circuits described and reserves the right to change any circuitry and specifications without notice at any time. No circuit patent licenses are implied. Liability of circuits it manufactures is limited as covered under its standard product warranty policy. No life support applications are authorized. © 1986

Tel: (408) 720-8737

Fax: (408) 720-8297

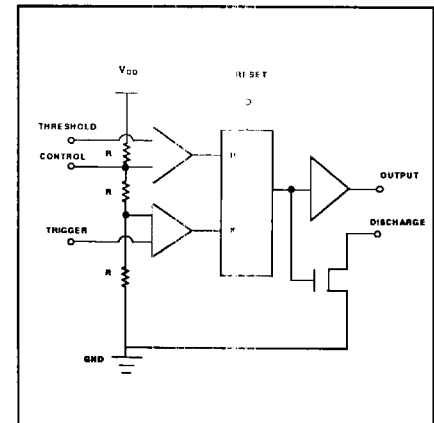
PIN CONFIGURATION



APPLICATIONS

- High speed one-shot (monostable) pulse generation
- Precision timing
- Sequential timing
- Long delay timer
- Pulse width and pulse position modulation
- Missing pulse detector
- Frequency divider
- Synchronized timer

BLOCK DIAGRAM (EACH TIMER)



ABSOLUTE MAXIMUM RATINGS

Supply voltage, V_{DD}	13.2V
Input voltage range	-0.3V to V_{DD}
Power dissipation	600mW
Operating temperature range	ALD4501PE, ALD4501SE 0° C to +70° C ALD 4501DE -55° C to +125° C
Storage temperature range	-65° C to +150° C
Lead temperature, 10 seconds	300° C

DC AND OPERATING ELECTRICAL CHARACTERISTICS

TA= 25°C V_{DD} = +5V unless otherwise specified

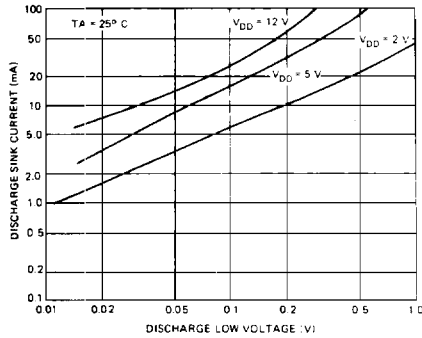
Parameter	Symbol	Min	Typ	Max	Unit	Test Conditions
Supply voltage	V_{DD}	2		12	V	
Supply current	I_{DD}		150	270	μ A	Outputs Unloaded
Timing error / Astable mode Initial Accuracy	t_{err}		1.0	2.6	%	$C = 0.1\mu F$
Drift with Temperature ¹	$\Delta t/\Delta T$		10.0		ppm/°C	$R_A = 1k\Omega$
Drift with Supply Voltage ¹	$\Delta t/\Delta V_{DD}$		0.1		%/V	$R_B = 1k\Omega$
Threshold Voltage	V_{th}	3.233	3.333	3.433	V	
Trigger Voltage	V_{TRIG}	1.567	1.667	1.767	V	
Trigger Current ²	I_{TRIG}		.01	0.4	nA	
Reset Voltage	V_{RST}	0.4	0.7	1.0	V	
Reset Current ²	I_{RST}		.01	0.4	nA	
Threshold Current ²	I_{th}		.01	0.4	nA	
Control Voltage Level	V_{CONT}	3.233	3.333	3.433	V	
Output Voltage Drop (Low)	V_{OL}		0.2	0.4	V	$I_{sink} \approx 10mA$
Output Voltage Drop (High)	V_{OH}	4.2	4.6		V	$I_{source} = -2mA$
Rise Time of Output ¹	t_r		10	20	ns	$R_L = 10M\Omega$
Fall Time of Output ¹	t_f		10	20	ns	$C_L = 10pF$
Discharge Transistor Leakage Current	I_{DL}		.01		μ A	
Discharge Voltage Drop	V_{DISC}		0.5	1.0	V	$I_{Discharge} = 40mA$
			0.2	0.4	V	$I_{Discharge} = 15mA$
Maximum Frequency Astable Mode	f_{max}		2		MHz	$R_A = 470\Omega$ $R_B = 200\Omega$ $C_T = 100pF$
Minimum Trigger Pulse Width ¹	t_{TRIG}		50	100	ns	

Notes: ¹ Sample tested parameters.

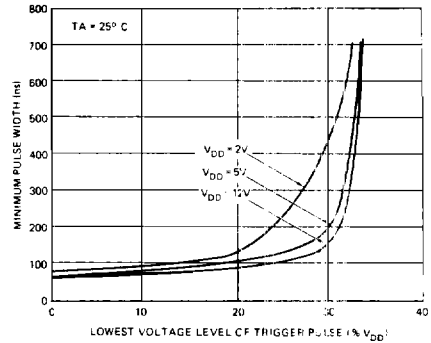
² Consists of junction leakage currents with strong temperature dependence.

TYPICAL PERFORMANCE CHARACTERISTICS

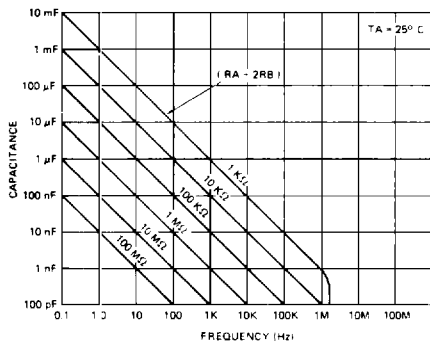
DISCHARGE OUTPUT SINK CURRENT AS A FUNCTION OF DISCHARGE LOW VOLTAGE



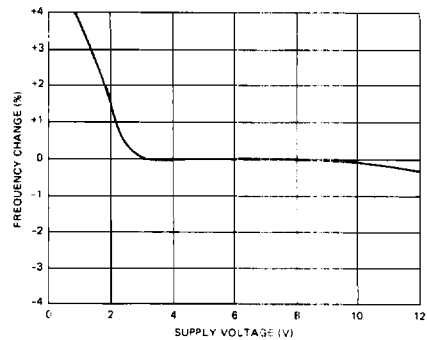
MINIMUM PULSE WIDTH REQUIRED FOR TRIGGERING



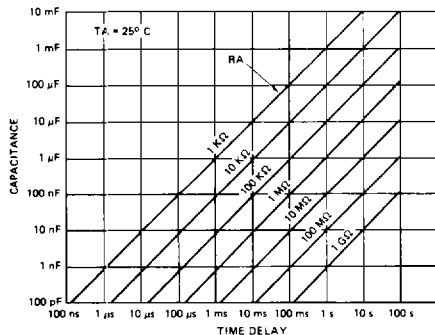
FREE RUNNING FREQUENCY AS A FUNCTION OF R_A , R_B AND C



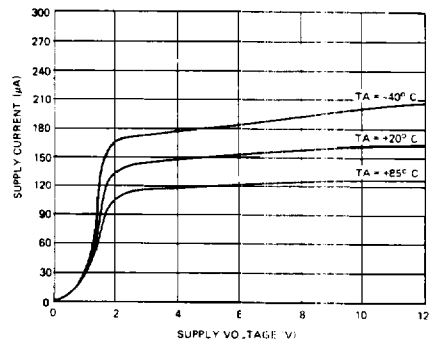
FREQUENCY CHANGE IN THE ASTABLE MODE AS A FUNCTION OF SUPPLY VOLTAGE



TIME DELAY IN THE MONOSTABLE MODE AS A FUNCTION OF R_A AND C

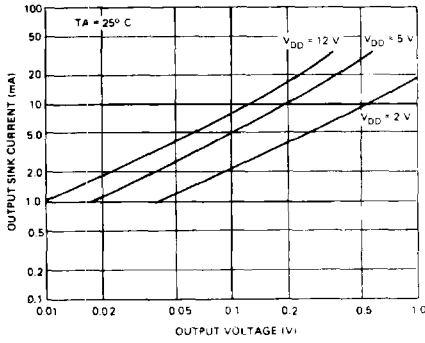


SUPPLY CURRENT AS A FUNCTION OF SUPPLY VOLTAGE

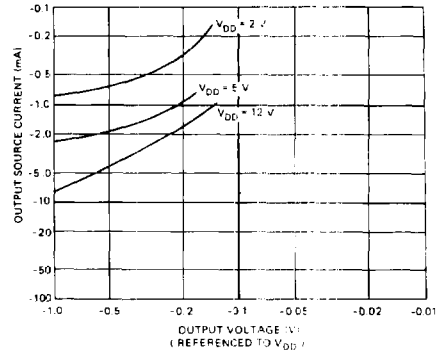


TYPICAL PERFORMANCE CHARACTERISTICS

OUTPUT SINK CURRENT AS A FUNCTION OF OUTPUT VOLTAGE

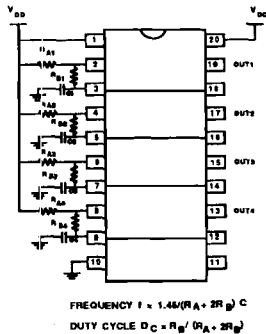


OUTPUT SOURCE CURRENT AS A FUNCTION OF OUTPUT VOLTAGE

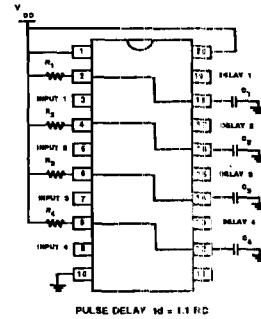


TYPICAL APPLICATIONS

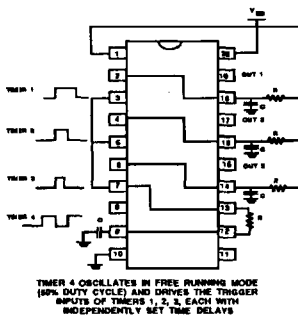
QUAD ASTABLE MODE OPERATION (FREE RUNNING OSCILLATOR)



QUAD MONOSTABLE MODE OPERATION (ONE SHOT PULSE)



SYNCHRONIZED TIMING GENERATORS



CHIP TOPOGRAPHY

