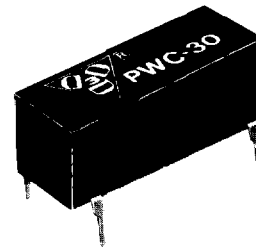


**Fast Logic**  
**Pulse Width Controller**

**SERIES: PWC-30**

**TTL Interfaced**  
**14 pin DIP**

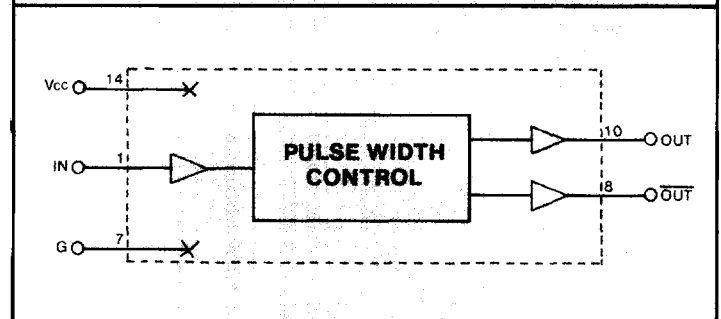
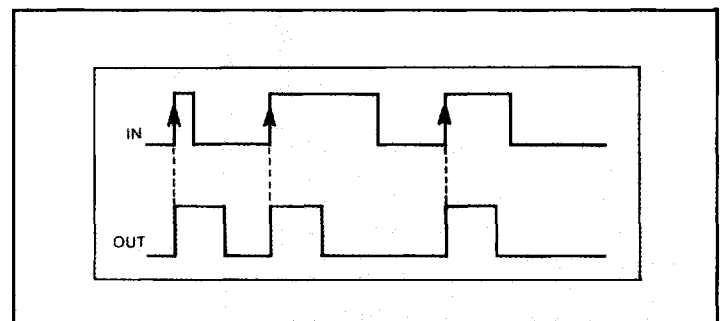


**Features:**

- Exact control of pulse width
- Rising edge trigger
- Auto-insertable
- Low power consumption
- High speed

**Specifications:**

- **Trigger Inherent Delay:**  $T_{DO} = 6.5 \pm 1 \text{ ns}$   
 $\overline{T}_{DO} = 8.5 \pm 1 \text{ ns}$
- **Pulse-width tolerance** = 5% or 2 ns (others on request)
- **Max. input PRR** = PW + 20 ns.
- **Supply voltage:** 5 Vdc.
- **Supply current:**  
 $I_{ccl}$ : 32 ma.  
 $I_{cch}$ : 7 ma.
- **Operating temperature:** 0°C to 70°C (-55° to 125°C on request).\*
- **Temperature coefficient:** 100 PPM/°C.
- **Output rise-time:** 2 ns typ.
- **DC parameters:** See TTL-Standard Schottky Logic Table on Page 6.



Part No.	Pulse Width (ns)
PWC-30-5	5
PWC-30-10	10
PWC-30-15	15
PWC-30-20	20
PWC-30-30	30
PWC-30-40	40
PWC-30-50	50
PWC-30-60	60
PWC-30-75	75
PWC-30-100	100
PWC-30-125	125
PWC-30-150	150
PWC-30-175	175
PWC-30-200	200
PWC-30-250	250
PWC-30-300	300
PWC-30-350	350
PWC-30-400	400
PWC-30-500	500

