



2-conductor PCB terminal block; 0.75 mm²; Pin spacing 7.5/7.62 mm; 10-pole; PUSH WIRE®

Item No.: 235-560



2-conductor PCB terminal block; 0.75 mm²; Pin spacing 7.5/7.62 mm; 10-pole; PUSH WIRE®

Marking

RoHS ✓
Compliant

Business data

Supplier	WAGO
Item no.	235-560
GTIN / EAN	4017332227063
Content	1
Order amount	60
Customer item number	

Notes

product cancelled
Last Call Date: 31.10.2016
Item description: Low-profile terminal strips with screwdriver-actuated PUSH WIRE® termination
Double-conductor connection for supply and distribution of signals – ideal for standard, single-conductor signal lines – suitable for push-in termination
Double solder pins for high mechanical stability
Combines with all 235 Series modular terminal blocks
Set to metric or inch pin spacing by compressing terminal strips together or pulling them apart
Conductor removal via screwdriver (2.5mm x 0.4mm)
Also available with test slot

Technical data

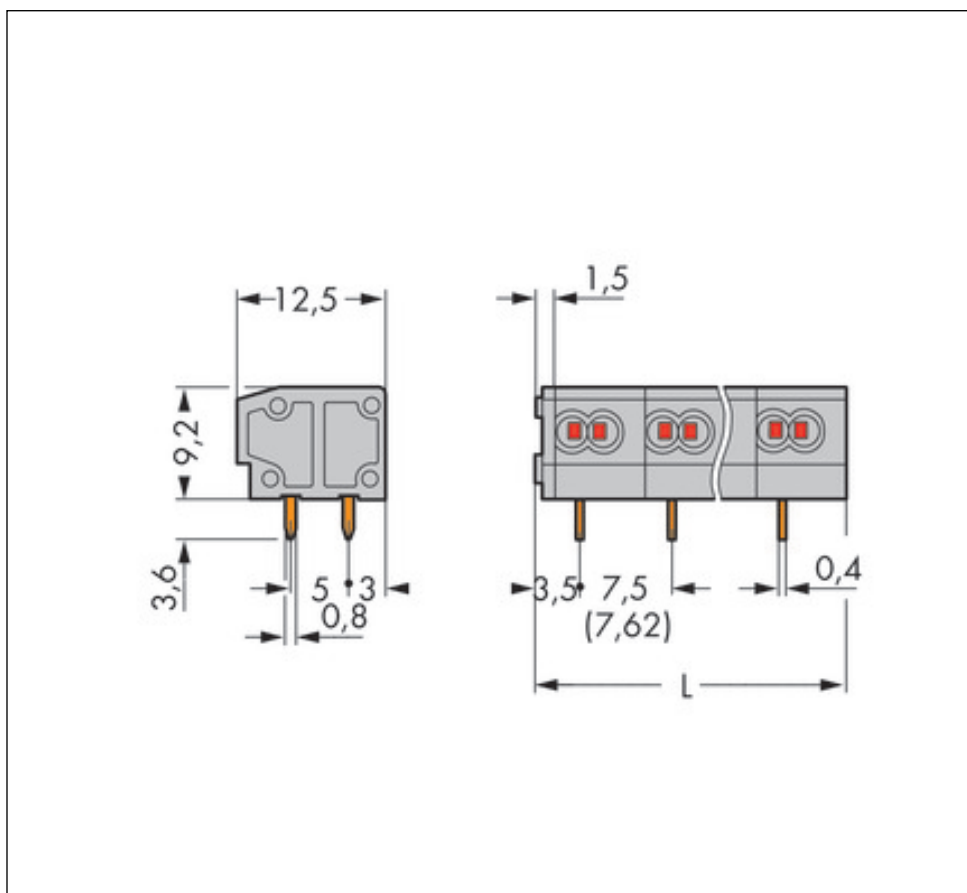
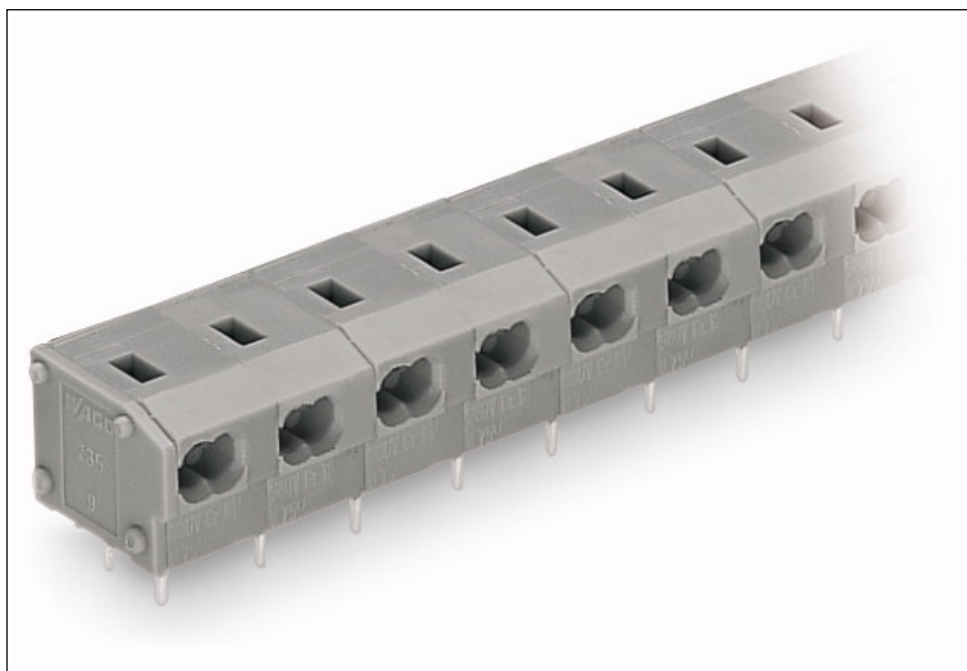
Miscellaneous

No. of poles	10
--------------	----

Technical data	
<i>Pin spacing</i>	7.5/7.62 mm / 0.295/0.3 in
<i>Total number of connection points</i>	20
<i>Total number of potentials</i>	20
<i>Color</i>	gray
<i>Ratings per</i>	IEC/EN 60664-1
<i>Rated voltage (III / 3) [V]</i>	400 [V]
<i>Rated impulse voltage (III / 3) [kV]</i>	6 [kV]
<i>Pollution degree (1)</i>	2
<i>Rated voltage (III/2) [V]</i>	630 [V]
<i>Rated impulse voltage (III / 2) [kV]</i>	6 [kV]
<i>Rated voltage (II / 2) [V]</i>	1000 [V]
<i>Rated impulse voltage (II / 2) [kV]</i>	6 [kV]
<i>Rated current [A]</i>	10 [A]
<i>Legend for ratings</i>	(III / 2) Overvoltage category III /
<i>Number of connection objects</i>	1
<i>Number of levels</i>	1
<i>Pull-in time</i>	0.0
<i>Connection technology</i>	PUSH WIRE®
<i>Number of connection points connector</i>	2
<i>Actuation type</i>	Operating tool
<i>Solid conductor</i>	0.25 ... 0.75 mm ² / 24 ... 18 AWG
<i>Fine-stranded conductor with ferrule without plastic collar</i>	0.25 ... 0.34 mm ² / ...
<i>Strip length</i>	9 ... 10 mm / 0.35 ... 0.39 Inch
<i>Conductor entry angle to the PCB [°]</i>	0 [°]
<i>Solder pin arrangement</i>	in line
<i>Solder pin length [mm]</i>	3.6 [mm]
<i>Drilled hole diameter (tolerance) [mm]</i>	1(+ 0.1) [mm]
<i>Material group</i>	I
<i>Insulating material</i>	Polyamide 66 (PA 66)
<i>Flammability class per UL94</i>	V0
<i>Limit temperature range</i>	-60 ... 105 °C
<i>Clamping spring material</i>	Chrome-nickel spring steel (CrNi)
<i>Contact material</i>	Electrolytic copper (Ecu)
<i>Contact plating</i>	tin-plated

Technical data	
<i>Weight [g]</i>	<i>1.111 [g]</i>
<i>Width</i>	<i>76.5 mm / 3.012 Inch</i>
<i>Height</i>	<i>12.8 mm / 0.504 Inch</i>
<i>Height from the surface</i>	<i>9.2 mm / 0.362 Inch</i>
<i>Depth</i>	<i>12.5 mm / 0.492 Inch</i>

Images & drawings



Address

WAGO Kontakttechnik GmbH & Co. KG

Hansastr. 27

32423 Minden

Telefon: 0571/887-0

Fax: 0571/887-169

<http://www.wago.com>

© WAGO Kontakttechnik GmbH & Co. KG

Technische Änderungen und Irrtümer vorbehalten.