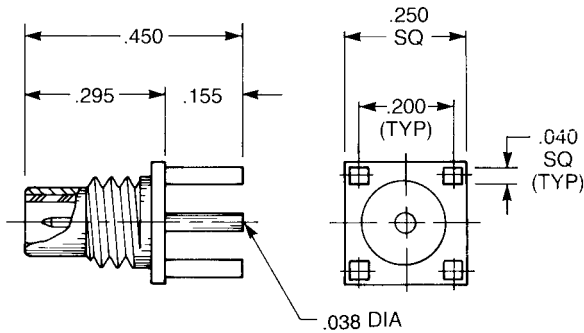


# SMC P.C. Board Receptacles

## Straight Jacks

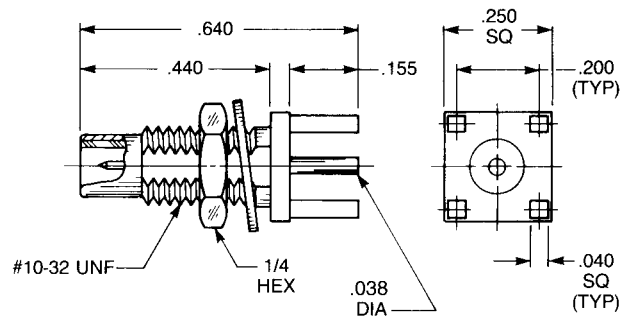


### **Straight Male Jack Receptacle**

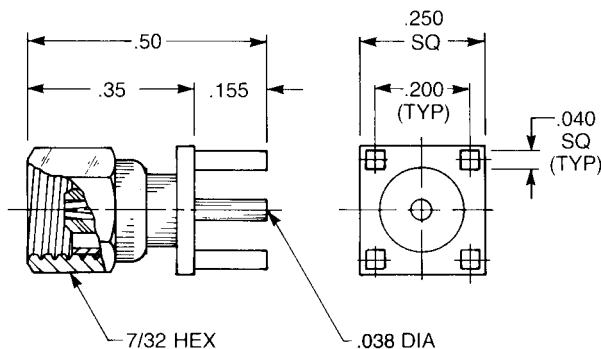
1009-1511-000 (Gold plated)  
1009-7511-000 (Nickel plated)

### **Bulkhead Mounted Straight Male Jack P.C. Board Receptacle**

1109-1511-000 (Gold plated)  
1109-7511-000 (Nickel plated)



## Straight Plug

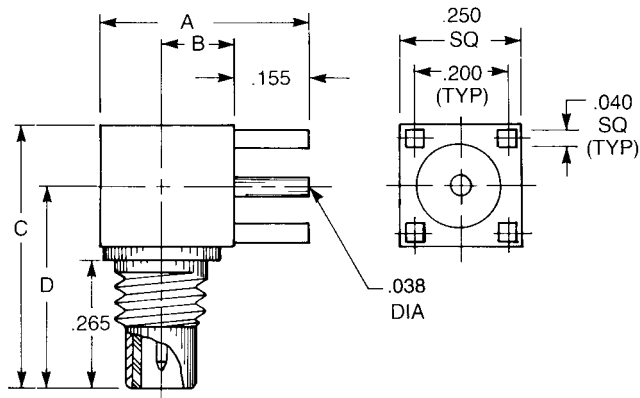


### **Straight Female Plug Receptacle**

1025-1511-000 (Gold plated)  
1025-7511-000 (Nickel plated)

# SMC P.C. Board Receptacles

## Right Angle Jacks



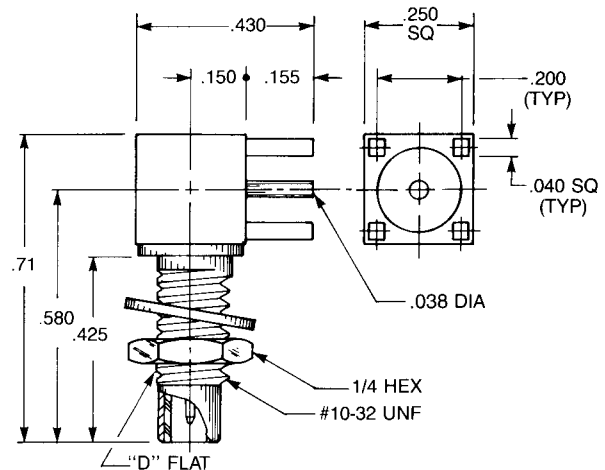
### Right Angle Male Jack Receptacle

A	B	C	D
.43	.15	.55	.42
1010-1511-000		(Gold plated)	
1010-7511-000		(Nickel plated)	

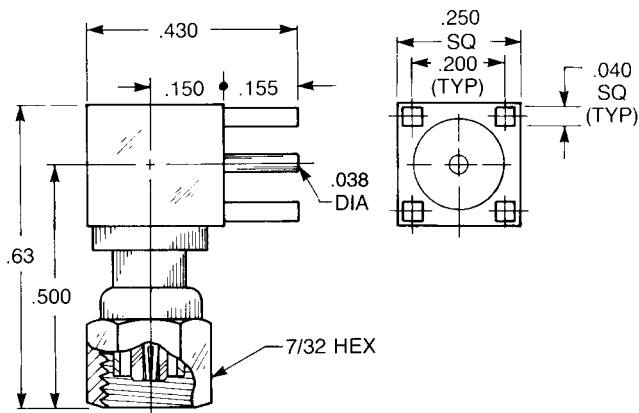
A	B	C	D
.50	.215	.55	.42
1010-1511-001		(Gold plated)	
1010-7511-001		(Nickel plated)	

### Bulkhead Mounted Right Angle Male Jack P.C. Board Receptacle

1110-1511-000 (Gold plated)  
1110-7511-000 (Nickel plated)



## Right Angle Plug

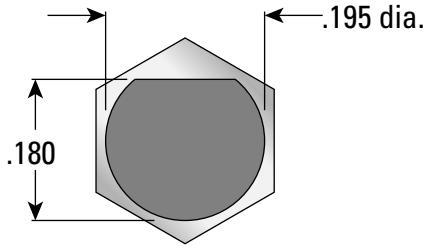


### Right Angle Female Plug Receptacle

1042-1511-000 (Gold plated)  
1042-7511-000 (Nickel plated)

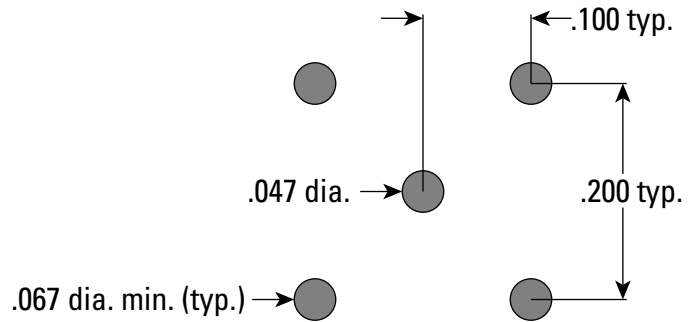
# Mounting Dimensions

## Bulkhead Receptacles



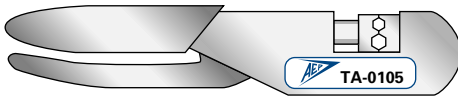
Flat of mounting surface is aligned with body hex as shown.

## P.C. Board Receptacles



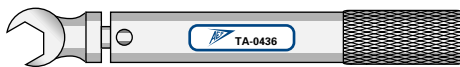
# Assembly Tooling

## Crimp tool



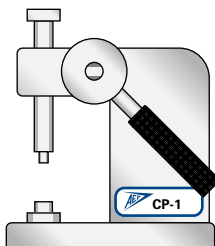
DESCRIPTION	AEP P/N
Crimp tool with .105" and .128" hex dies	TA-0105

## Torque Wrench



DESCRIPTION	AEP P/N
Torque wrench with 7/32" jaws for SMC connector backnuts; 95 inch-ounces torque	TA-0436
Torque wrench with 7/32" jaws for SMC coupling nuts; 3 inch-pounds torque	TA-0398

## Capping Press



DESCRIPTION	AEP P/N
Capping tool (arbor press) with base for SMC right angle plugs	CP-7
Capping tool (arbor press) with base for SMC right angle jacks	CP-8