

product: DELPHI PN 15414370
 material: CUNI3SI1MG
 surface: F.SN3
 material thickness: 0,25 mm
 cross section [mm²]: 0,6 | 0,75 | 1,0

strip length: 4,00 mm
 cable type: IRT2
 insulation ø [mm]: 1,70 - 2,15
 seal:

**Uncontrolled
Copy**
For Information only!

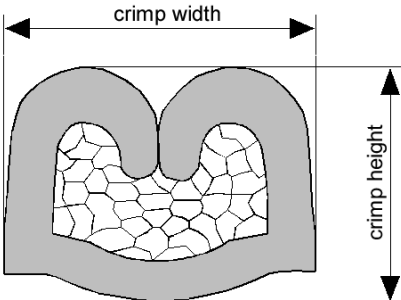
conductor dimension					crimp dimension [mm]					
cable type	cross sect. [mm ²]	struct. n x d [mm]	insul. diam. [mm]	tear-out force [N]	core		insulation			
					height ± 0,05	width ± 0,10	height ± 0,10	width ± 0,10	height ± tol.	width ± tol.
IRT2	0,6	12 x 0,25	1,83	90	1,20	1,70	2,20	2,10		
IRT2	0,75	24 x 0,19	1,80	120	1,30	1,70	2,30	2,10		
IRT2	1,0	19 x 0,25	2,07	160	1,40	1,70	2,40	2,15		

core:
C-1.60-3.0-10
DPN 10713736

insulation:
IS-2.00-3.0-12-A
DPN 10882043

anvil:

two piece anvil:
AC-1.60-3.25
DPN 10764051
AI-2.00-3.2-0.4-A
DPN 10882044



DELPHI PN 15414370



cable:
 $0,60 \text{ mm}^2 = 12 \times 0,25 \text{ mm}$

crimp height:
1,20 mm

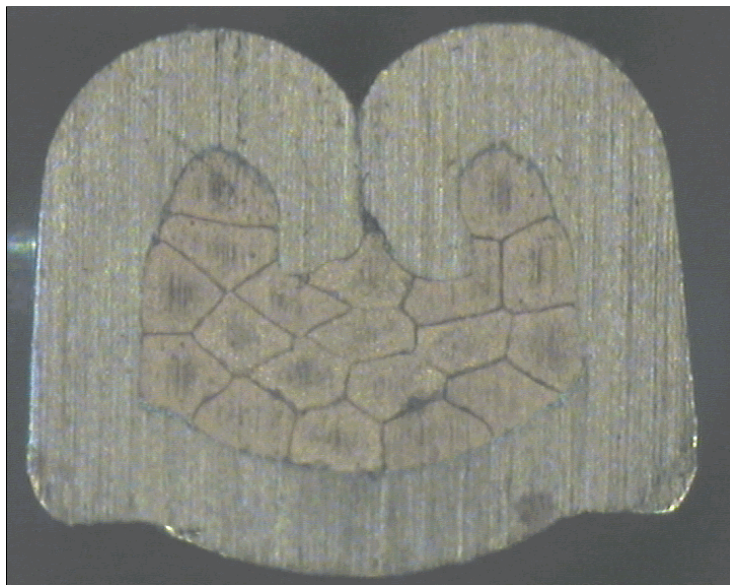
crimp width:
1,70 mm



cable:
 $0,75 \text{ mm}^2 = 24 \times 0,19 \text{ mm}$

crimp height:
1,30 mm

crimp width:
1,70 mm



cable:
 $1,00 \text{ mm}^2 = 19 \times 0,25 \text{ mm}$

crimp height:
1,40 mm

crimp width:
1,70 mm