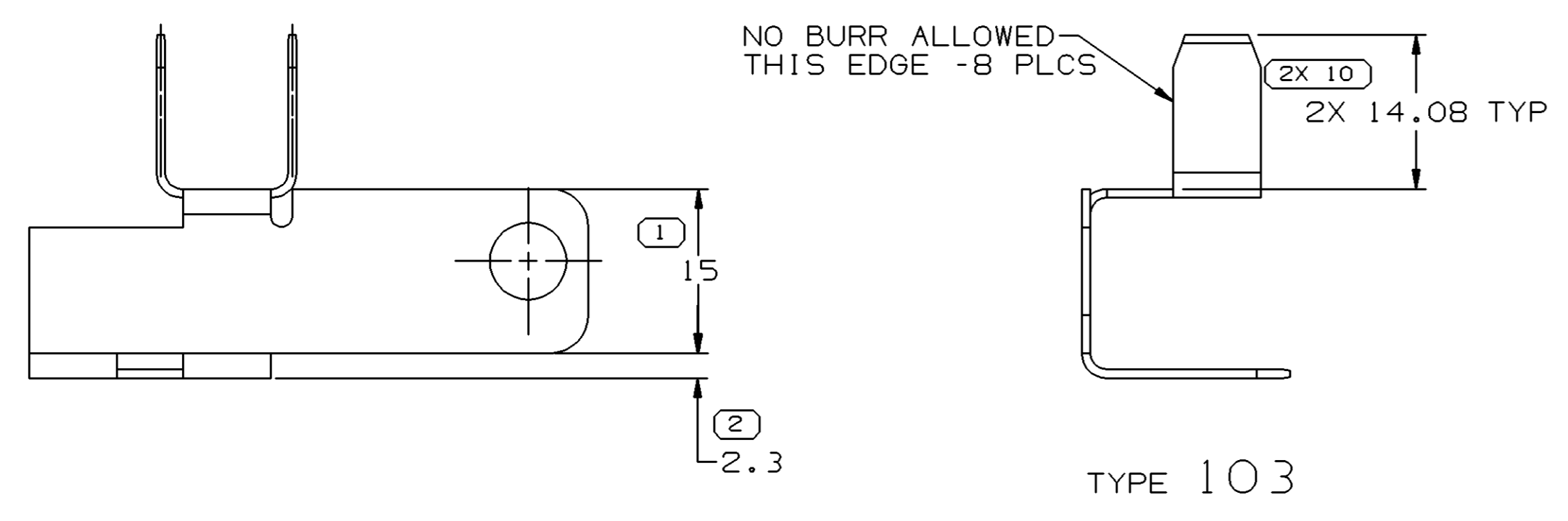
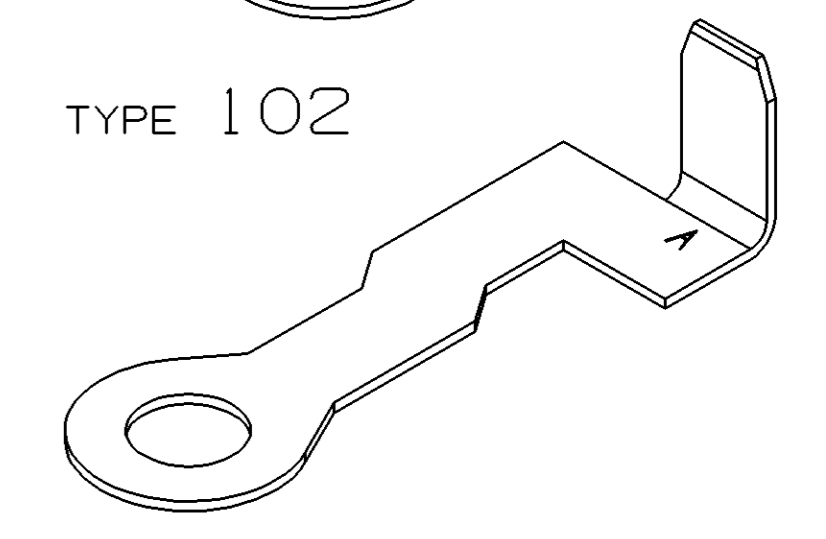
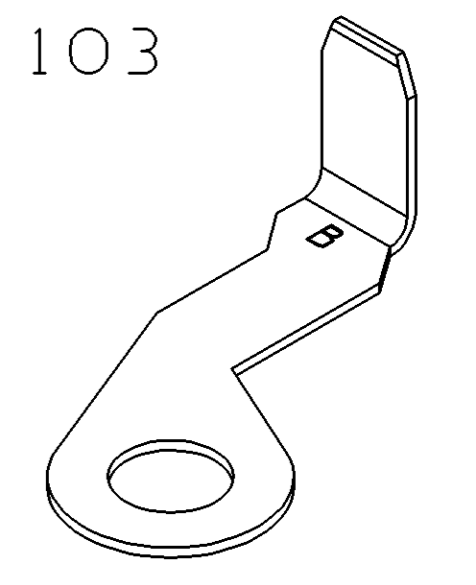
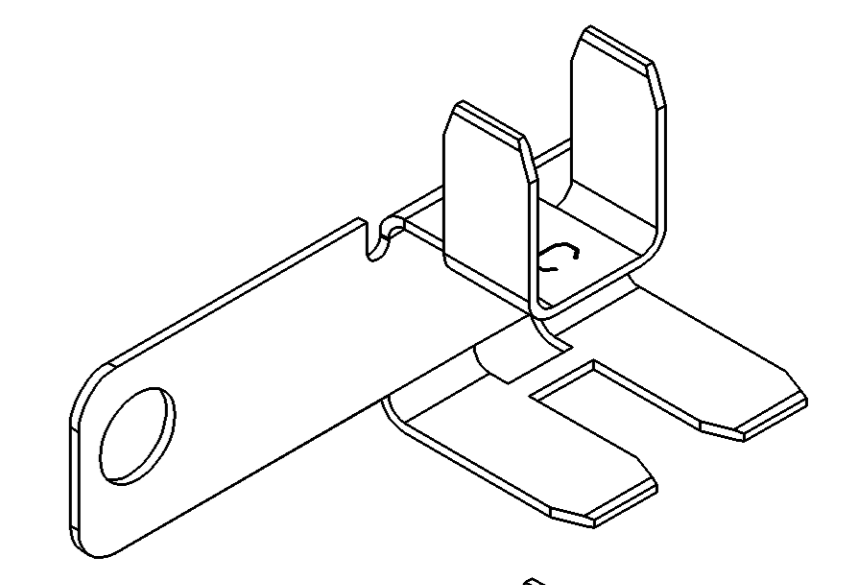
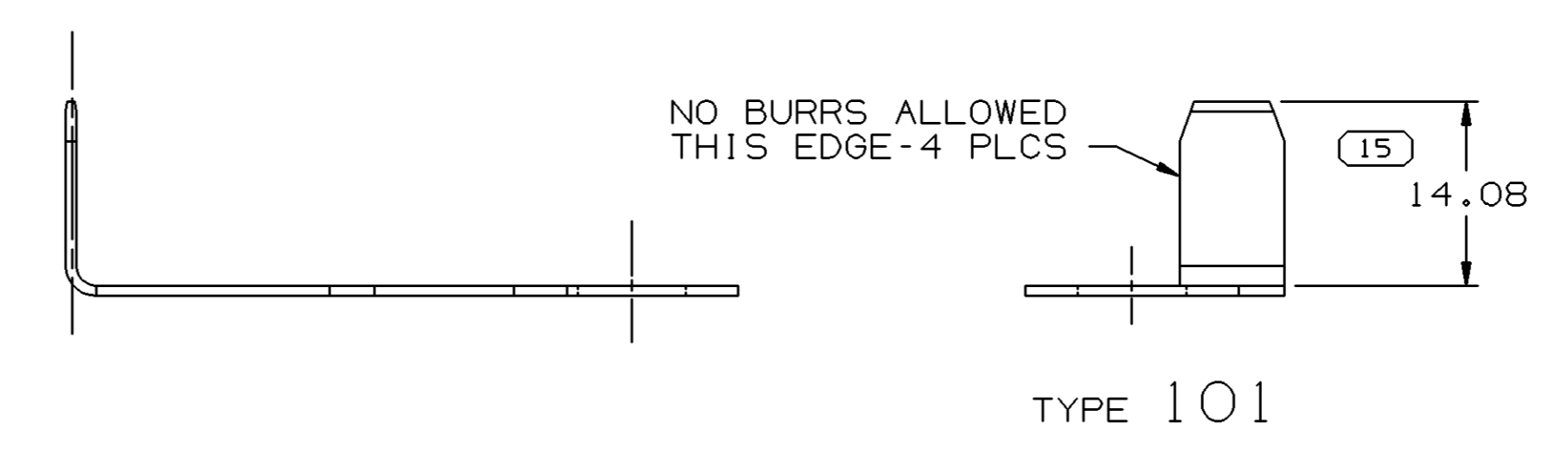
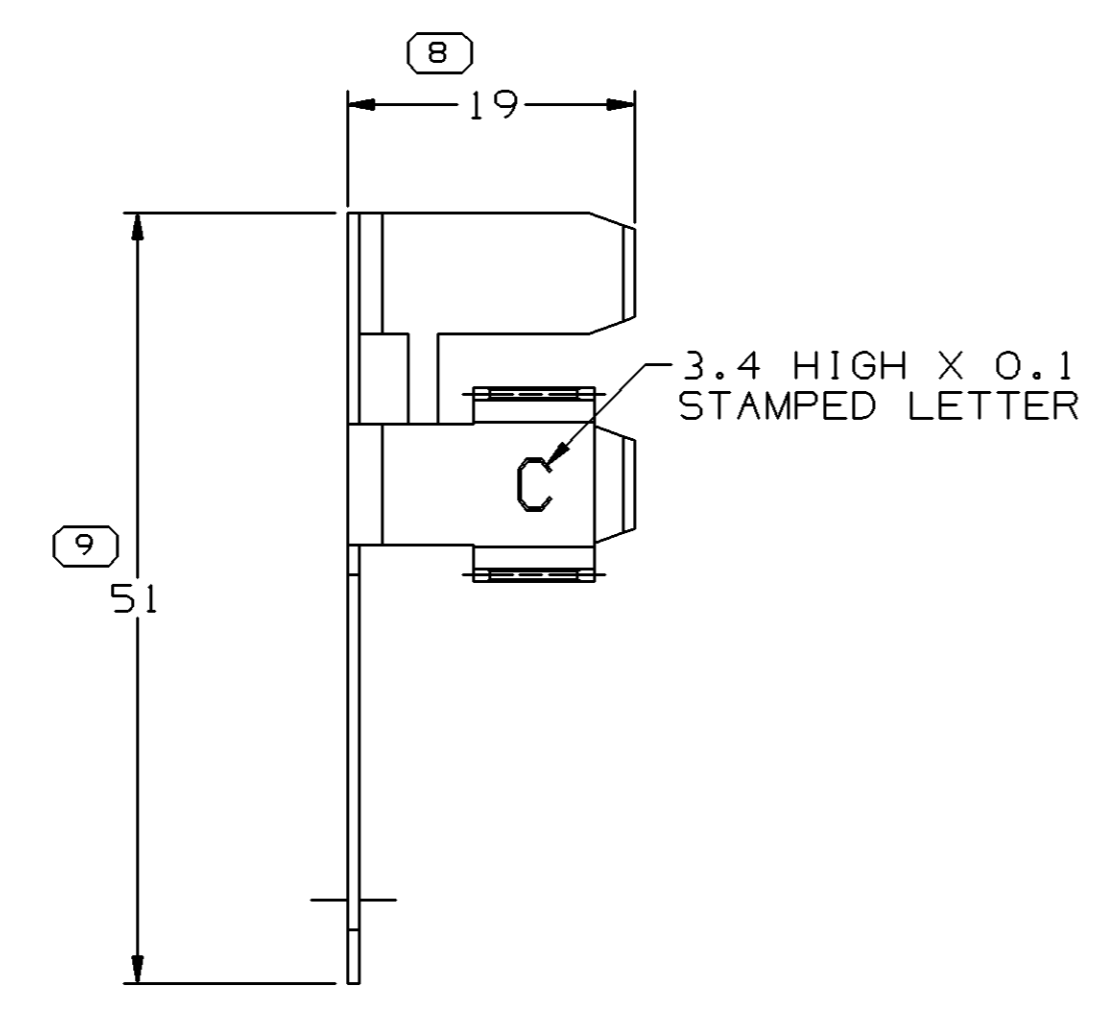
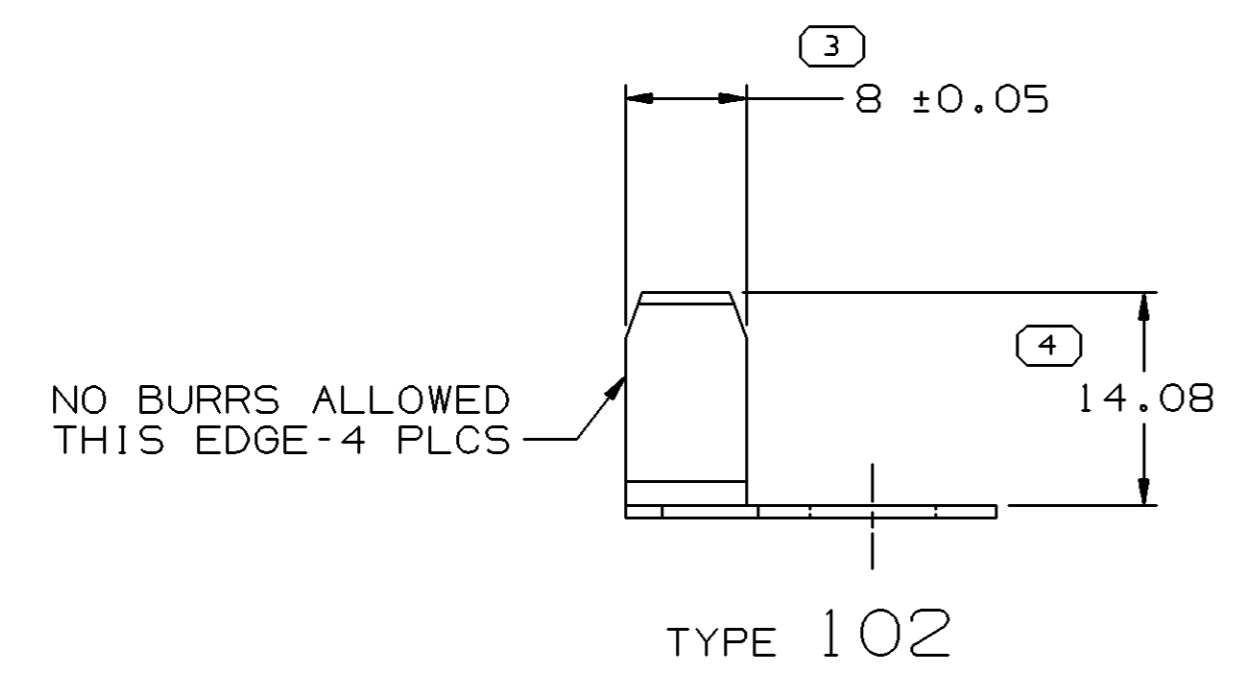
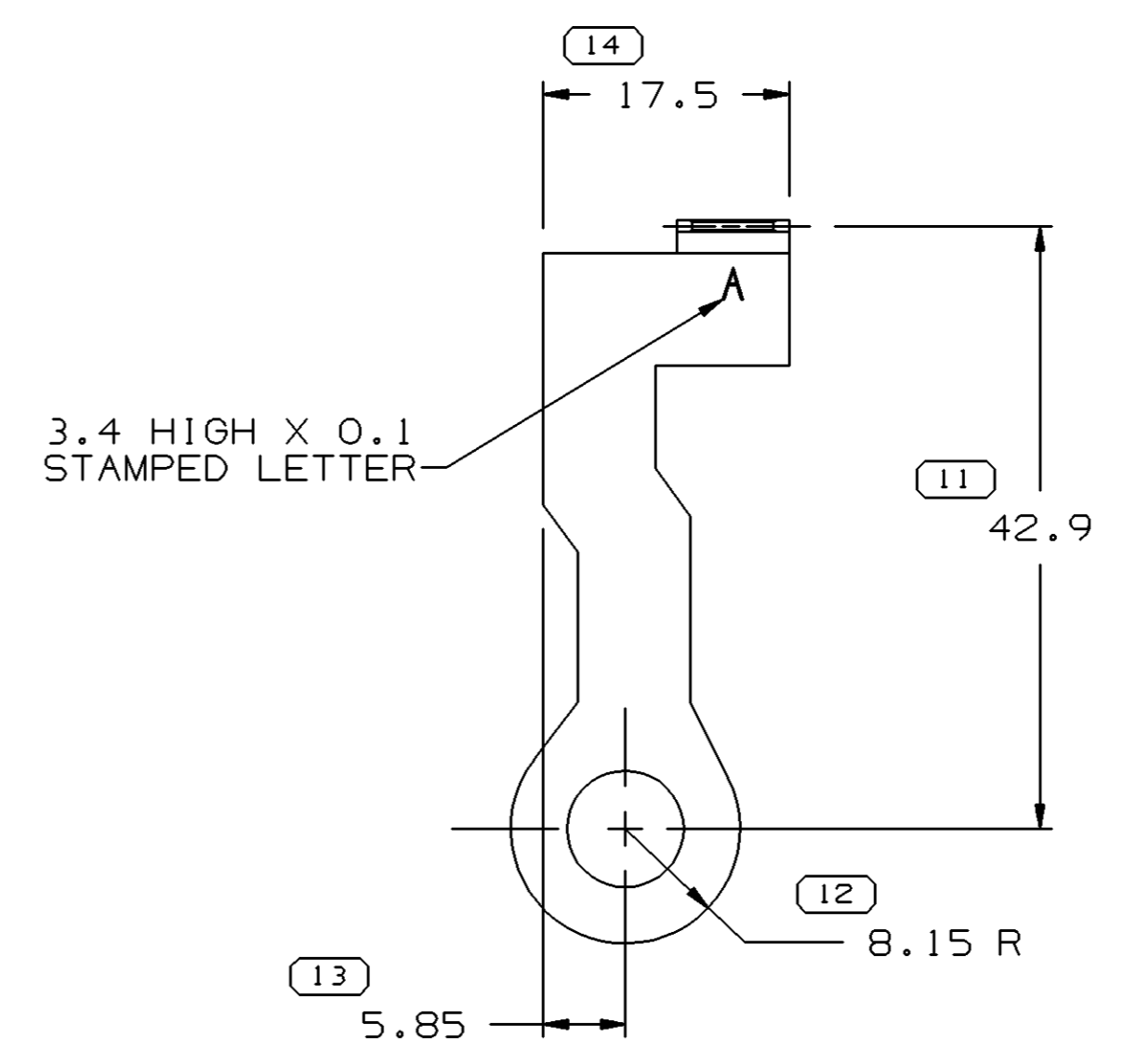
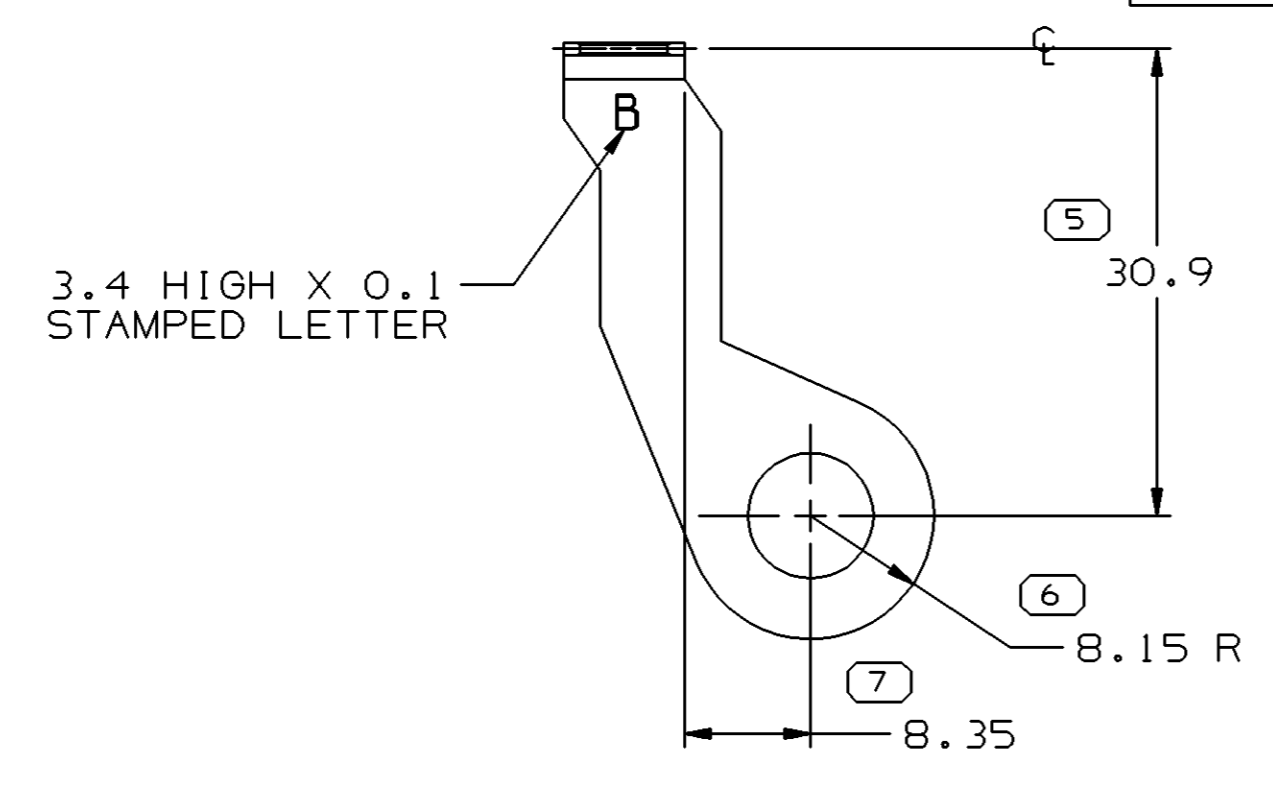


SYMBOL DEFINITION		MISSING SYMBOLS	
A DIMENSION WITHOUT AN INSPECTION REPORT SYMBOL () DOES NOT REQUIRE INSPECTION. IT MAY BE CONTROLLED ON THE INDIVIDUAL COMPONENT DRAWING.	TOTAL NO OF INSPECTIONS REQUIRED	NO MISSING SYMBOL NUMBER	16
	LAST NO. USED		15

DWG STATUS					ZONE	REVISION HISTORY	AUTH	DR	APVD 1	APVD 2
DATE	STG	REV	N/P	CHG						
02JL93		-				REMOVED 12146530, 12146531 & 12146532 FROM TAXI 12146557 - REV LEVEL REMAINS AT "A"	156228	CP	CP	
02JL93		-				REVISED 12146530 - REV ADVANCED TO "B"; UPDATED 12146531 & 12146532 - NO REV UPDATE REQ'D	156250	CP	CP	
07DE93		-				REVISED 12146530, 12146531, 12146532	157974	RPC	RKR	
14FE95		-				ALL PARTS - REVISED PLATING NOTE & MATL CALL-OUT - NO REV UPDATE REQ'D	165239	AMV	BAS	
08SE04	R	03	-	-		12146531 - REVISED GRAPHICS	258908	MJM	MJM	MR
19DE05	R	04	-	-		12146530 WAS 12146531	275149	MM	MM	MR



PROCESSING NOTE PLATING - HOT DIPPED TIN PLATED (MECHANICALLY WIPED) WITH A THICKNESS OF 0.0005/0.0020MM (0.00002/0.00008 MICRO INCHES)

- NOTES
1. BLADE TO BE PERPENDICULAR TO THE CIRCUIT TRACK, MEASURED FROM TIP OF BLADE.
 2. MATING TERMINAL 12146336 OR EQUIVALENT.
 3. RECOMMENDED CIRCUIT MATERIAL SHOULD HAVE AN ELECTRICAL CONDUCTIVITY GREATER OR EQUAL TO 20% IACS AT 68° F. USE OF A MATERIAL LESS THAN THIS MUST BE APPROVED BY PACKARD ELECTRIC.
 4. USED TO MAKE INSERT MOLDED ASM 12146285.

PART NO	REV	N/P	STATUS	MATERIAL	TYPE
12146532	A	-	-	SEE NOTE	102
12146531	A	-	-	SEE NOTE	101
12146530	B	2	-	SEE NOTE	103

N/A PROCESS SENSITIVE DIMENSION	
DIMENSIONS ENCLOSED IN () INDICATE REFERENCE DIMENSIONS AND NO TOLERANCE LIMITS ARE ESTABLISHED	
FROM 0 TO 12	CHART D >12
TOLERANCE UNLESS OTHERWISE SPECIFIED ±0.1 ±0.2	
ANGULAR TOLERANCE ±2°	

DWG TYPE PART DRAWING	
STYLE	
VOLUME (CM³)	DISTR CODE D
UNLESS OTHERWISE SPECIFIED THIS DOCUMENT IS IN ACCORDANCE WITH ASME Y14.5M-1994 AS AMENDED BY THE GM GLOBAL DIMENSIONING AND TOLERANCING ADDENDUM-2001. SEPARATE PATTERNS OF FEATURES MAY BE GAGED SEPARATELY REGARDLESS OF DATUM REFERENCES.	
ALL DIMENSIONS ARE IN MILLIMETERS	
THIRD ANGLE PROJECTION	DO NOT SCALE
USE MATH DATA	UNIGRAPHICS

DELPHI
DELPHI PACKARD ELECTRIC SYSTEMS
WARREN, OH

DR J. RHINEHART	DATE 20MY92
APVD1 C. PAPAS	02JL93
APVD2 C. PAPAS	02JL93
APVD3 G. DETTER	10AU93
APVD4	
APVD5	

SUBSTANCES OF CONCERN AND RECYCLED CONTENT PER DELPHI 10949001

MATERIAL M1581 METL NONFERROUS C15100 1/2 HD

DRAWING NAME TAXI TERM M M/P 800

DRAWING NUMBER 12146779

SIZE A1	SCALE 2:1	FRAME NO 1 OF 1	SHEET NO 1 OF 1	STG R	REV 04	N/P -
---------	-----------	-----------------	-----------------	-------	--------	-------