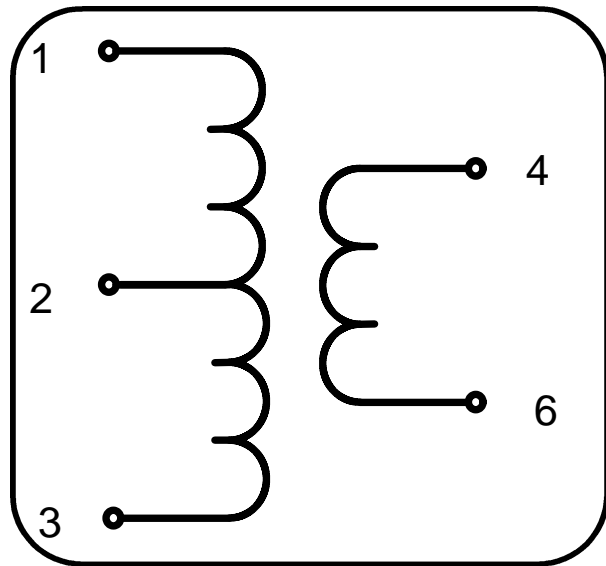


2012 Size

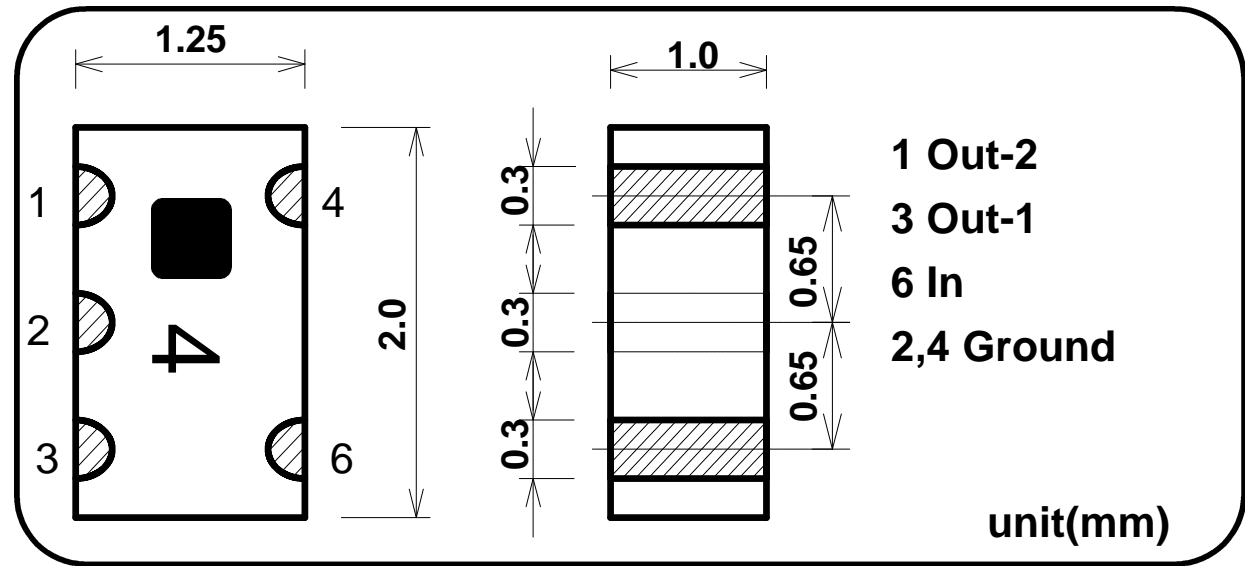
Chip Multilayer RF Transformer

SLT-S009T[]-[]

Equivalent Circuits



Shape & Size



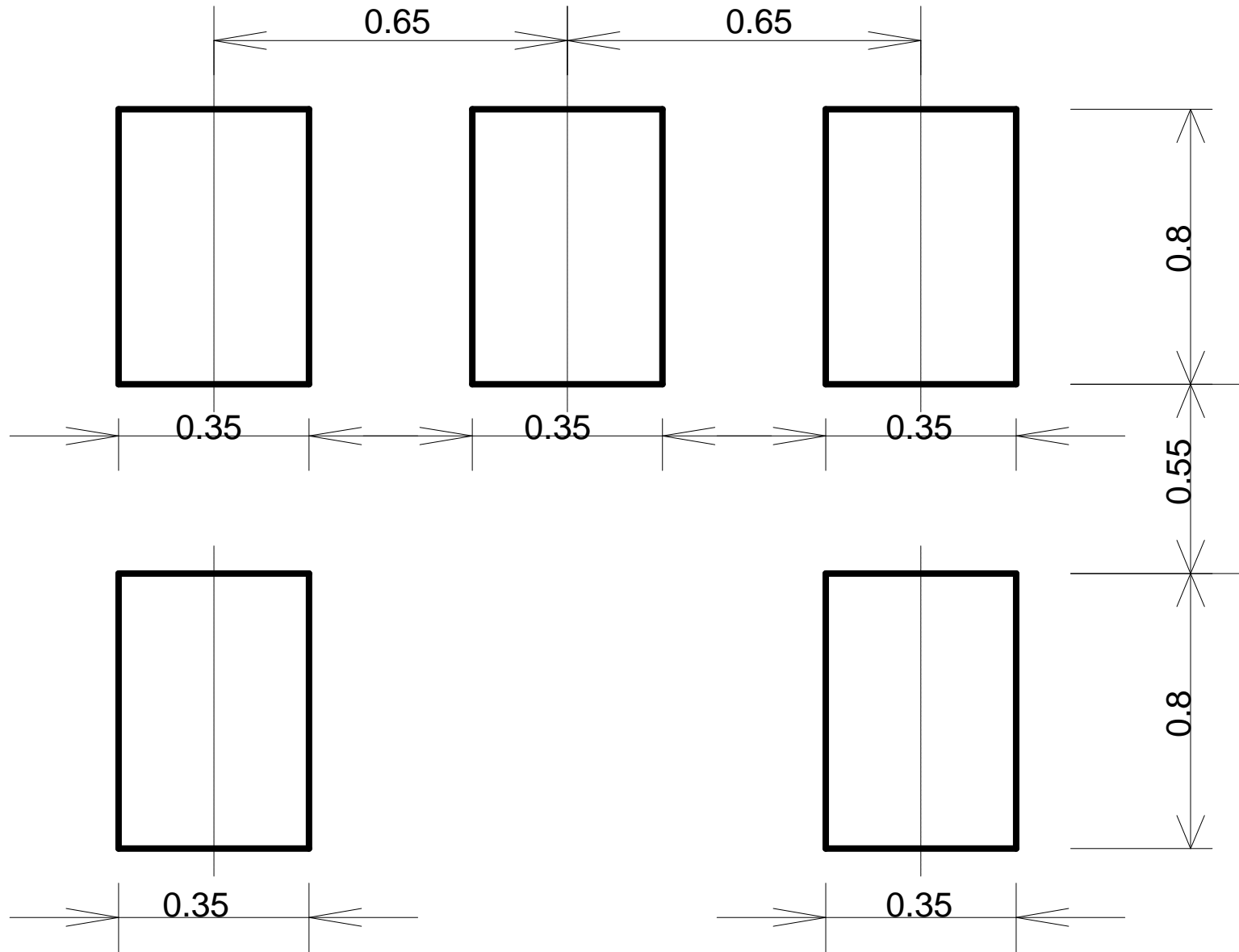
Specifications

P/N	Impedance	Frequency [MHz]	Matching Capacitance	Insertion Loss *1	Phase Balance	Handling Power	Temperature Range
SLT-S009T4-019	50:200	190	15pF	4.0dB Max. (1.5dB Typ.)	180 +/- 10deg.	100mW Max.	-35 to +85 deg.C
SLT-S009T4-038		380	3pF	4.0dB Max. (1.0dB Typ.)			
SLT-S009T8-019	50:400	190	15pF	4.0dB Max. (1.5dB Typ.)			
SLT-S009T8-038		380	3pF	4.0dB Max. (0.8dB Typ.)			

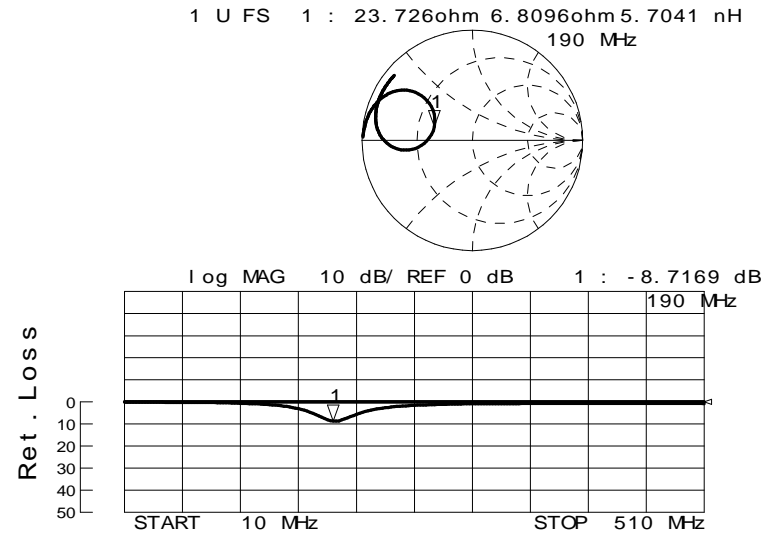
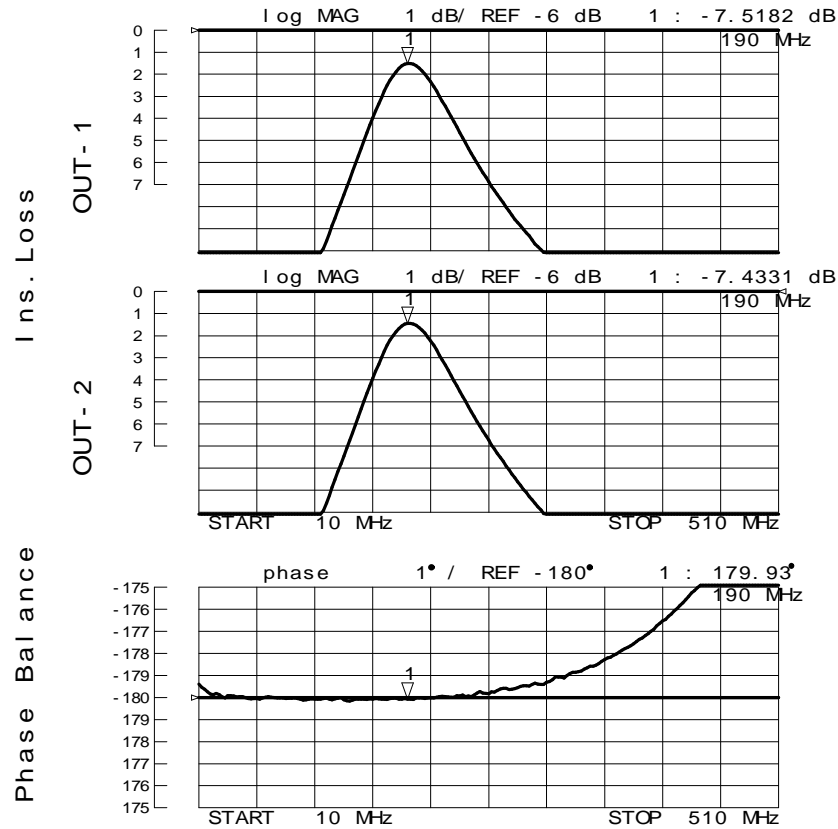
*1:Not include splitting loss & resistor loss

"Other frequencies and impedance ratios are available ,please contact us for details."

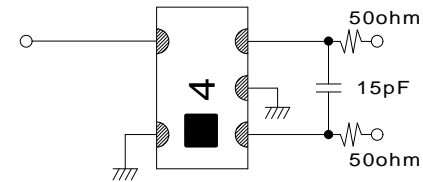
FOOT PATTERN



SLT-S009T4-019 Sample Data

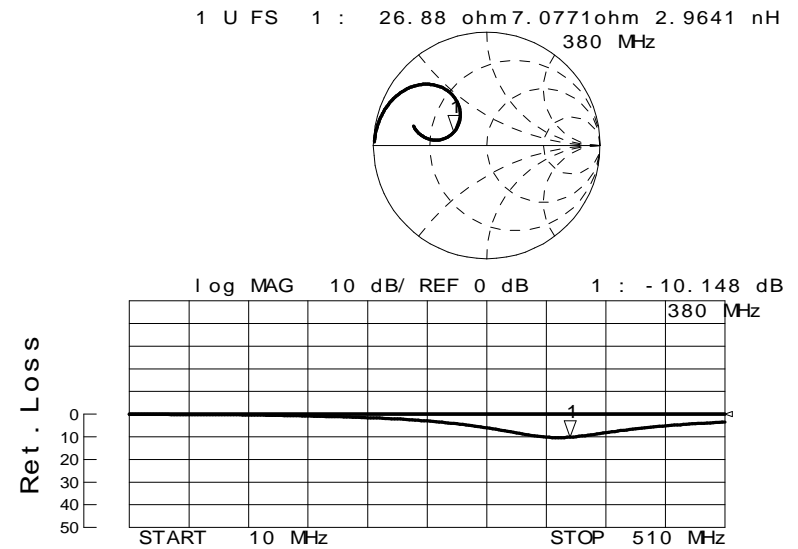
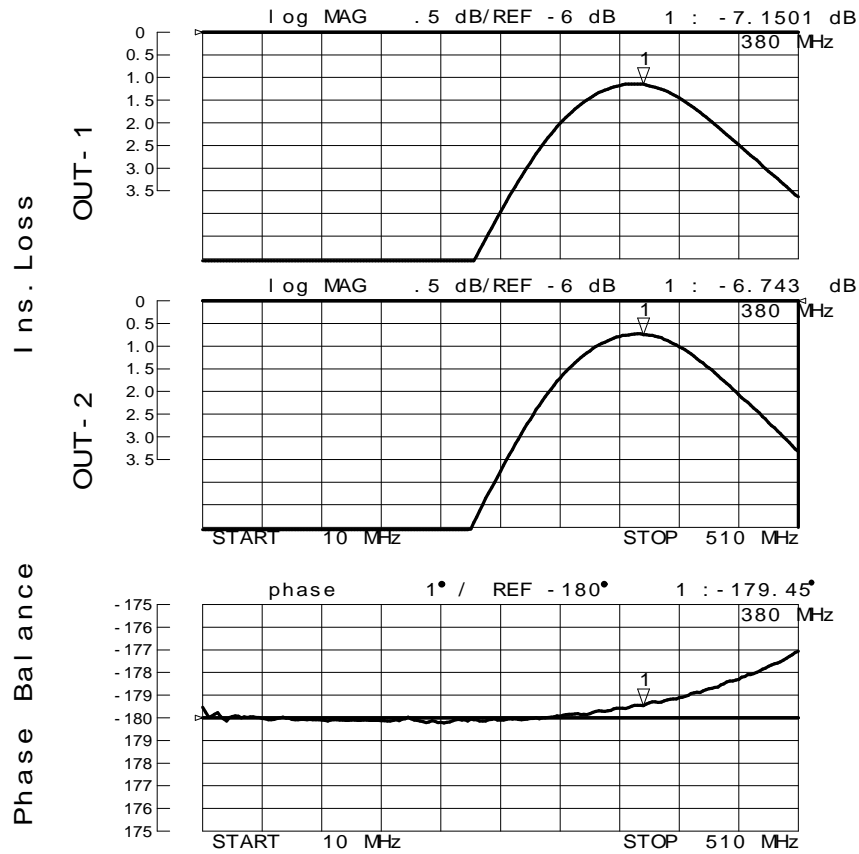


Chip RF Transformer "SLT-S009T4-019"
 50ohm : 200ohm

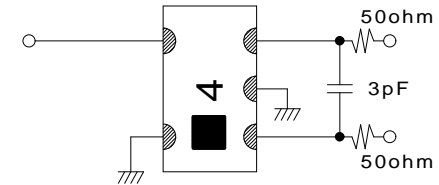


Insertion Loss(Out 1, Out 2) :
 measurement-splitting loss-resistor loss

SLT-S009T4-038 Sample Data

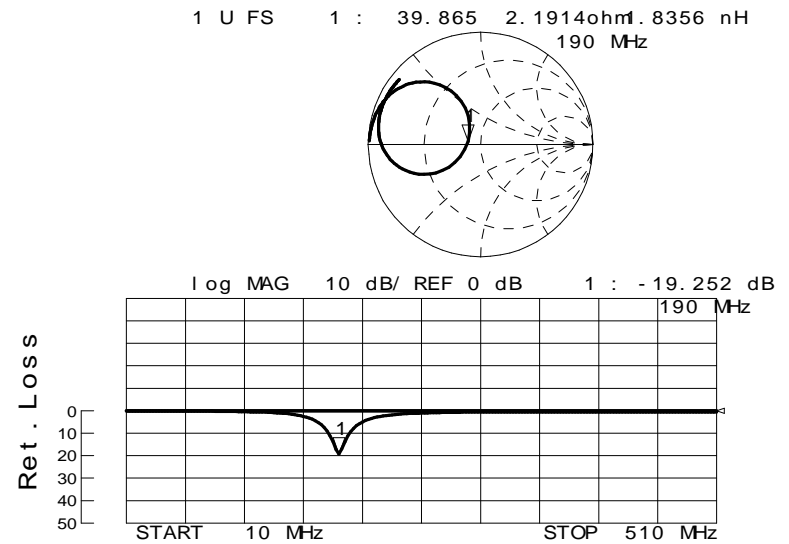
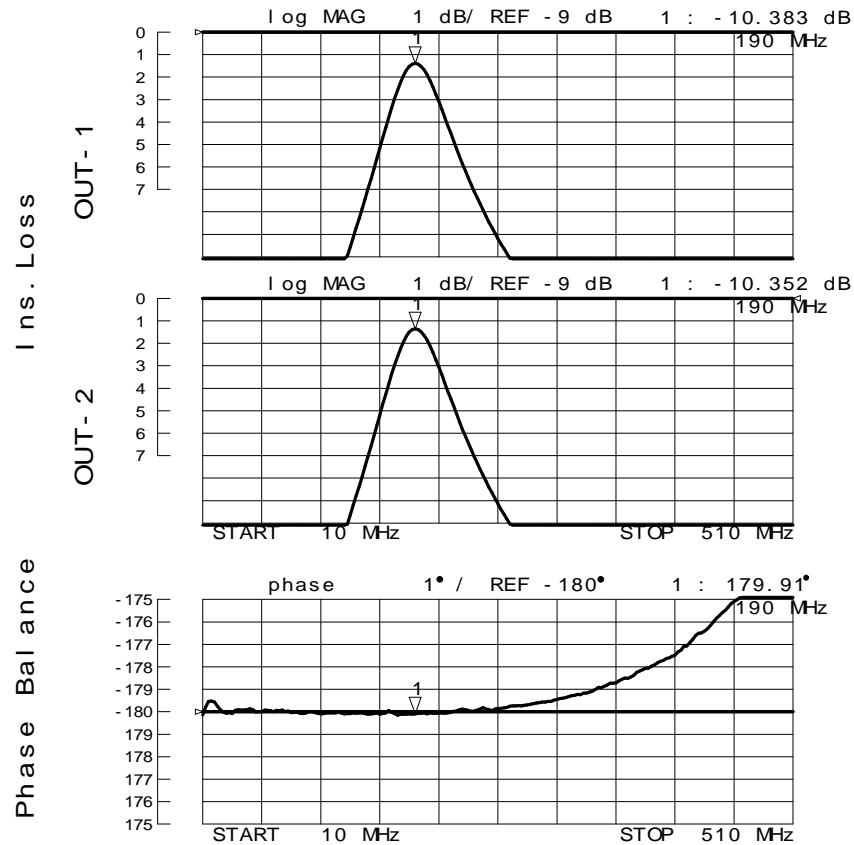


Chi p RF Transf or mer " SLT- S009T4- 038"
50ohm : 200ohm

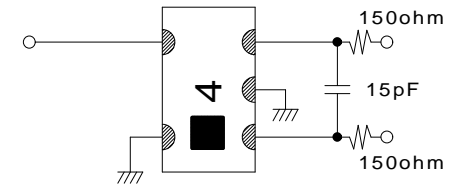


Insertion Loss(Out 1, Out 2) :
measurement - splitting loss - resistor loss

SLT-S009T8-019 Sample Data

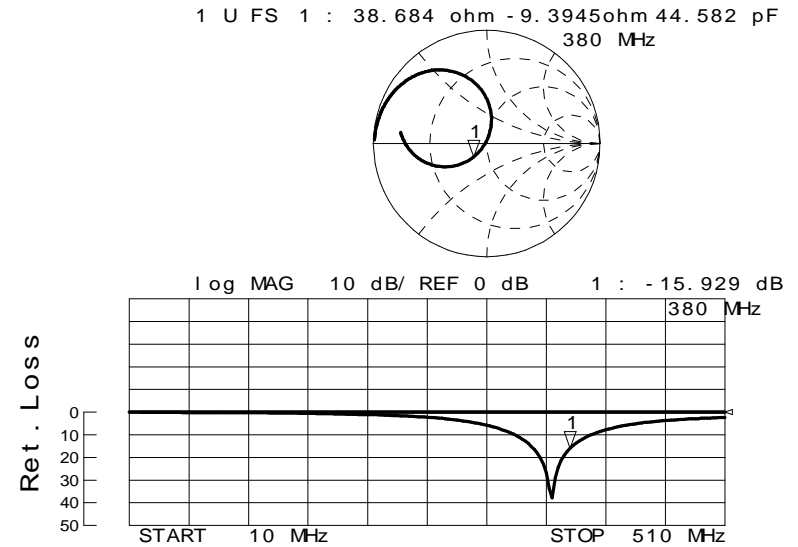
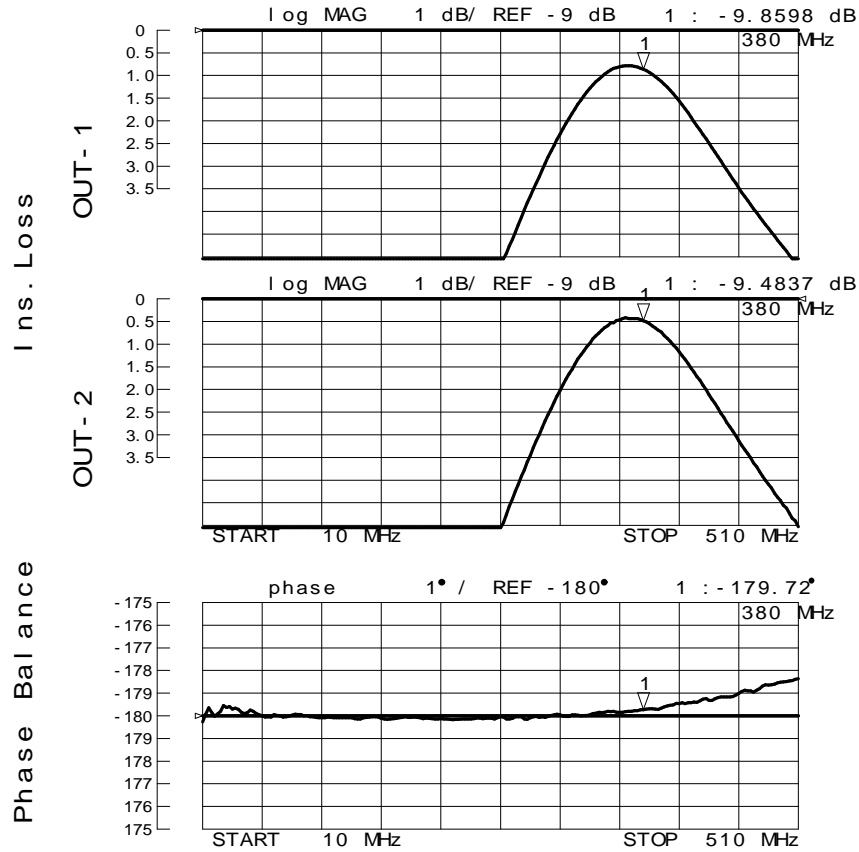


Chip RF Transformer "SLT-S009T8-019"
 50ohm : 400ohm

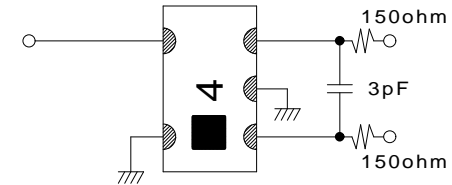


Insertion Loss(Out1, Out2):
 measurement-splitting loss-resistor loss

SLT-S009T8-038 Sample Data



Chi p RF Transf or mer " SLT- S009T8- 038"
50ohm : 400ohm



Insertion Loss(Out 1, Out 2) :
measurement - splitting loss - resistor loss

Do not apply DC voltage between primary and secondary winding.
If you apply DC voltage between primary and secondary winding,
use DC cut capacitor as below circuit A.

- C i r c u i t A -

