

CD4031BM/CD4031BC

64-Stage Static Shift Register

General Description

The CD4031BM/CD4031BC is an integrated, complementary MOS (CMOS), 64-stage, fully static shift register. Two data inputs, DATA IN and RECIRCULATE IN, and a MODE CONTROL input are provided. Data at the DATA input (when MODE CONTROL is low) or data at the RECIRCULATE input (when MODE CONTROL is high), which meets the setup and hold time requirements, is entered into the first stage of the register and is shifted one stage at each positive transition of the CLOCK.

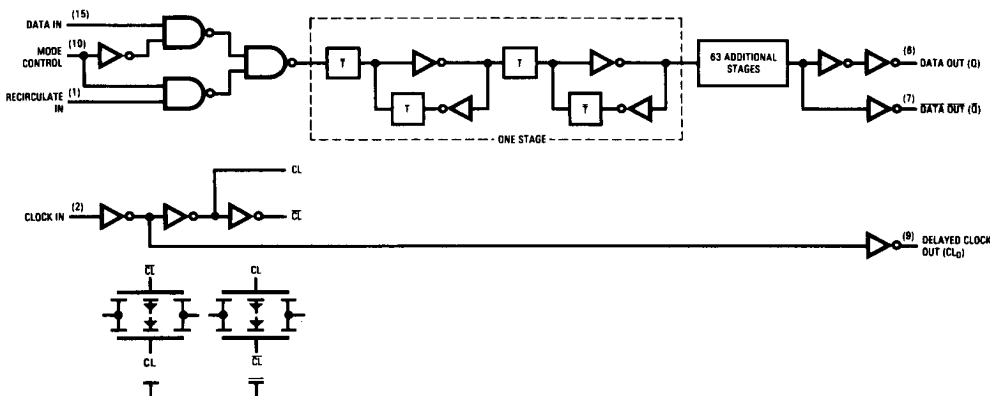
Data output is available in both true and complement forms from the 64th stage. Both the DATA OUT (Q) AND DATA OUT (\bar{Q}) outputs are fully buffered.

The CLOCK input of the CD4031BM/CD4031BC is fully buffered, and present only a standard input load capacitance. However, a DELAYED CLOCK OUTPUT (CL_D) has been provided to allow reduced clock drive fan-out and transition time requirements when cascading packages.

Features

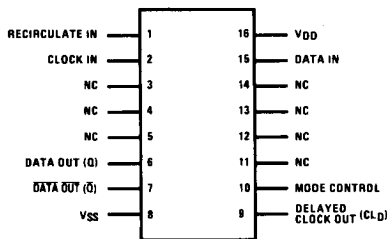
- Wide supply voltage range 3.0V to 15V
- High noise immunity 0.45 V_{DD} (typ.)
- Low power TTL compatibility fan out of 2 driving 74L or 1 driving 74LS
- Fully static operation DC to 8 MHz $V_{DD} = 10V$ (typ.)
- Fully buffered clock input 5 pF (typ.) input capacitance
- Single phase clocking requirements
- Delayed clock output for reduced clock drive requirements
- Fully buffered outputs
- High current sinking capability 1.6 mA
- Q output @ $V_{DD} = 5V$ and 25°C

Logic and Connection Diagrams



TL/F/5962-1

Dual-In-Line Package



Top View

TL/F/5962-2

Order Number CD4031B*
*Please look into Section 8, Appendix D for availability of various package types.

Absolute Maximum Ratings (Notes 1 and 2)

If Military/Aerospace specified devices are required, contact the National Semiconductor Sales Office/Distributors for availability and specifications.

Supply Voltage (V _{DD})	-0.5V to +18V
Input Voltage (V _{IN})	-0.5V to V _{DD} + 0.5V
Storage Temperature Range (T _S)	-65°C to +150°C
Power Dissipation (P _D)	
Dual-In-Line	700 mW
Small Outline	500 mW
Lead Temp. (T _L) (Soldering, 10 sec.)	260°C

Recommended Operating Conditions (Note 2)

Supply Voltage (V _{DD})	3V to 15V
Input Voltage (V _{IN})	0V to V _{DD}
Operating Temperature Range (T _A)	
CD4031BM	-55°C to +125°C
CD4031BC	-40°C to +85°C

DC Electrical Characteristics (Note 2) CD4031BM

Symbol	Parameter	Conditions	-55°C		+25°C			+125°C		Units
			Min	Max	Min	Typ	Max	Min	Max	
I _{DD}	Quiescent Device Current	V _{DD} = 5V, V _{IN} = V _{DD} or V _{SS} V _{DD} = 10V, V _{IN} = V _{DD} or V _{SS} V _{DD} = 15V, V _{IN} = V _{DD} or V _{SS}		5 10 20		0.01 0.01 0.02	5 10 20		150 300 600	μA
V _{OL}	Low Level Output Voltage	V _{DD} = 5V } V _{IH} = V _{DD} , V _{IL} = 0V, I _O < 1 μA V _{DD} = 10V } V _{DD} = 15V }		0.05 0.05 0.05		0 0 0	0.05 0.05 0.05		0.05 0.05 0.05	V
V _{OH}	High Level Output Voltage	V _{DD} = 5V } V _{IH} = V _{DD} , V _{IL} = 0V, I _O < 1 μA V _{DD} = 10V } V _{DD} = 15V }	4.95 9.95 14.95		4.95 9.95 14.95	5 10 15		4.95 9.95 14.95		V
V _{IL}	Low Level Input Voltage	V _{DD} = 5V, V _O = 0.5V or 4.5V } V _{DD} = 10V, V _O = 1.0V or 9.0V } V _{DD} = 15V, V _O = 1.5V or 13.5V } I _O < 1 μA		1.5 3.0 4.0		2.25 4.5 6.75	1.5 3.0 4.0		1.5 3.0 4.0	V
V _{IH}	High Level Input Voltage	V _{DD} = 5V, V _O = 0.5V or 4.5V } V _{DD} = 10V, V _O = 1.0V or 9.0V } V _{DD} = 15V, V _O = 1.5V or 13.5V } I _O < 1 μA	3.5 7.0 11.0		3.5 7.0 11.0	2.75 5.5 8.25		3.5 7.0 11.0		V
I _{OL}	Low Level Output Current, Q Output (Note 3)	V _{DD} = 5V, V _O = 0.4V } V _{IH} = V _{DD} V _{DD} = 10V, V _O = 0.5V } V _{IL} = 0V V _{DD} = 15V, V _O = 1.5V }	2.3 5.1 10.5		1.9 4.2 8.8	3.8 8.4 17		1.3 2.8 6.1		mA
I _{OL}	Low Level Output Current, Q and CL _D Outputs (Note 3)	V _{DD} = 5V, V _O = 0.4V } V _{IH} = V _{DD} V _{DD} = 10V, V _O = 0.5V } V _{IL} = 0V V _D = 15V, V _O = 1.5V }	0.64 1.6 4.2		0.51 1.3 3.4	0.88 2.25 8.8		0.36 0.9 2.4		mA
I _{OH}	High Level Output Current, All Outputs (Note 3)	V _{DD} = 5V, V _O = 4.6V } V _{IH} = V _{DD} V _{DD} = 10V, V _O = 9.5V } V _{IL} = 0V V _{DD} = 15V, V _O = 13.5V }	-0.64 -1.6 -4.2		-0.51 -1.3 -3.4	-0.88 -2.25 -8.8		-0.36 -0.9 -2.4		mA
I _{IN}	Input Current	V _{DD} = 15V, V _{IN} = 0V V _{DD} = 15V, V _{IN} = 15V		-0.1 0.1		-10 ⁻⁵ 10 ⁻⁵	-0.1 0.1		-1.0 1.0	μA

Truth Tables

Mode Control (Data Selection)

Mode Control	Data In	Recirculate In	Data Into First Stage
0	0	X	0
0	1	X	1
1	X	0	0
1	X	1	1

Each Stage

D _n	CL	Q _n
0		0
1		1
X		NC

X = irrelevant NC = no change = Low to High level transition = High to Low level transition

DC Electrical Characteristics (Note 2) CD4031BC

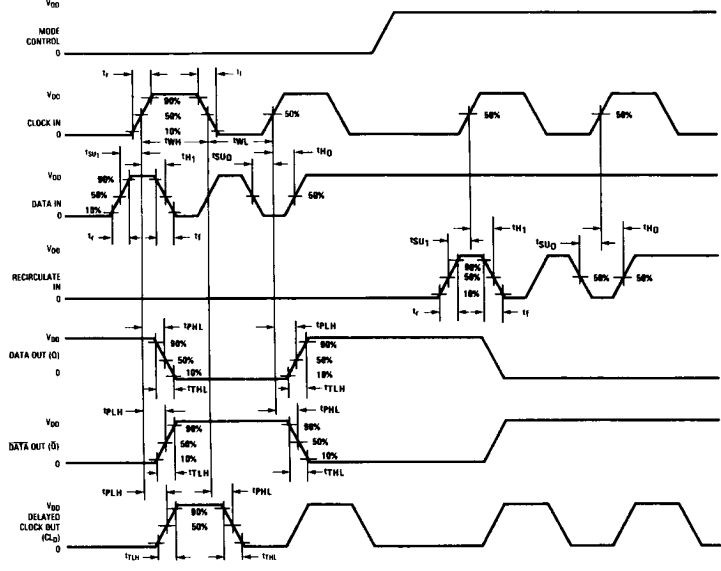
Symbol	Parameter	Conditions	-40°C		+25°C			+85°C		Units
			Min	Max	Min	Typ	Max	Min	Max	
I _{DD}	Quiescent Device Current	V _{DD} = 5V, V _{IN} = V _{DD} or V _{SS} V _{DD} = 10V, V _{IN} = V _{DD} or V _{SS} V _{DD} = 15V, V _{IN} = V _{DD} or V _{SS}		20 40 80		0.01 0.01 0.02	20 40 80		150 300 600	μA
V _{OL}	Low Level Output Voltage	V _{DD} = 5V V _{DD} = 10V V _{DD} = 15V } V _{IH} = V _{DD} , V _{IL} = 0V, I _O < 1 μA		0.05 0.05 0.05		0 0 0	0.05 0.05 0.05		0.05 0.05 0.05	V
V _{OH}	High Level Output Voltage	V _{DD} = 5V V _{DD} = 10V V _{DD} = 15V } V _{IH} = V _{DD} , V _{IL} = 0V, I _O < 1 μA	4.95 9.95 14.95		4.95 9.95 14.95	5 10 15		4.95 9.95 14.95		V
V _{IL}	Low Level Input Voltage	V _{DD} = 5V, V _O = 0.5V or 4.5V V _{DD} = 10V, V _O = 1.0V or 9.0V V _{DD} = 15V, V _O = 1.5V or 13.5V } I _O < 1 μA		1.5 3.0 4.0		2.25 4.5 6.75	1.5 3.0 4.0		1.5 3.0 4.0	V
V _{IH}	High Level Input Voltage	V _{DD} = 5V, V _O = 0.5V or 4.5V V _{DD} = 10V, V _O = 1.0V or 9.0V V _{DD} = 15V, V _O = 1.5V or 13.5V } I _O < 1 μA	3.5 7.0 11.0		3.5 7.0 11.0	2.75 5.5 8.25		3.5 7.0 11.0		V
I _{OL}	Low Level Output Current, Q Output (Note 3)	V _{DD} = 5V, V _O = 0.4V V _{DD} = 10V, V _O = 0.5V V _{DD} = 15V, V _O = 1.5V } V _{IH} = V _{DD} , V _{IL} = 0V	1.8 4.0 8.7		1.6 3.5 7.5	3.8 8.4 17		1.3 2.8 6.1		mA
I _{OL}	Low Level Output Current, Q̄ and CLD Outputs (Note 3)	V _{DD} = 5V, V _O = 0.4V V _{DD} = 10V, V _O = 0.5V V _{DD} = 15V, V _O = 1.5V } V _{IH} = V _{DD} , V _{IL} = 0V	0.52 1.3 3.6		0.44 1.1 3.0	0.88 2.25 8.8		0.36 0.9 2.4		mA
I _{OH}	High Level Output Current, All Outputs (Note 3)	V _{DD} = 5V, V _O = 4.6V V _{DD} = 10V, V _O = 9.5V V _{DD} = 15V, V _O = 13.5V } V _{IH} = V _{DD} , V _{IL} = 0V	-0.52 -1.3 -3.0		-0.44 -1.1 -3.0	-0.88 -2.25 -8.8		-0.36 -0.9 -2.4		mA
I _{IN}	Input Current	V _{DD} = 15V, V _{IN} = 0V V _{DD} = 15V, V _{IN} = 15V		-0.3 0.3		-10 ⁻⁵ 10 ⁻⁵	-0.3 0.3		-1.0 1.0	μA

Note 1: "Absolute Maximum Ratings" are those values beyond which the safety of the device cannot be guaranteed. They are not meant to imply that the devices should be operated at these limits. The tables of "Recommended Operating Conditions" and "Electrical Characteristics" provide conditions for actual device operation.

Note 2: V_{SS} = 0V unless otherwise specified.

Note 3: I_{OH} and I_{OL} are tested one output at a time.

Switching Time Waveforms



TL/F/5962-3

AC Electrical Characteristics*

T_A = 25°C, C_L = 50 pF, R_L = 200k, Input t_r = t_f = 20 ns, unless otherwise specified

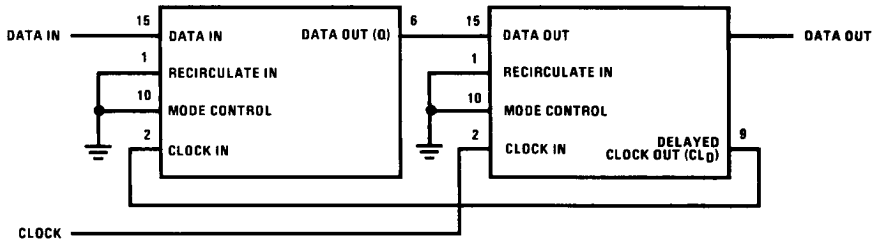
Symbol	Parameter	Conditions	Min	Typ	Max	Units
t _{PHL} , t _{PLH}	Propagation Delay Time, Clock to Q and \bar{Q}	V _{CC} = 5V V _{CC} = 10V V _{CC} = 15V		300 125 100	600 250 200	ns ns ns
t _{PHL} , t _{PLH}	Propagation Delay Time, Clock to CL _D	V _{CC} = 5V V _{CC} = 10V V _{CC} = 15V		125 60 50	250 125 100	ns ns ns
t _{THL} , t _{TLH}	Output Transition Time, All Outputs	V _{CC} = 5V V _{CC} = 10V V _{CC} = 15V		100 50 40	200 100 80	ns ns ns
t _{SU0} t _{SU1}	Minimum Data Setup Time, DATA IN or RECIRCULATE IN to Clock	V _{CC} = 5V V _{CC} = 10V V _{CC} = 15V		100 50 40	200 100 80	ns ns ns
t _{H0} t _{H1}	Minimum Data Hold Time, Clock to DATA IN or RECIRCULATE IN	V _{CC} = 5V V _{CC} = 10V V _{CC} = 15V		100 50 40	200 100 80	ns ns ns
t _{WL} , t _{WH}	Minimum Clock Pulse Width	V _{CC} = 5V V _{CC} = 10V V _{CC} = 15V		150 60 50	30 125 100	ns ns ns
f _{CL}	Maximum Clock Frequency	V _{CC} = 5V V _{CC} = 10V V _{CC} = 15V	1.6 4.0 5.0	3.2 8.0 10		MHz MHz MHz
t _{RCL} , t _{FCL}	Maximum Clock Input Rise and Fall Times (Note 4)	V _{CC} = 5V V _{CC} = 10V V _{CC} = 15V	15 10 5			μs μs μs
C _{IN}	Input Capacitance	Any Input		5	7.5	pF

*AC Parameters are guaranteed by DC correlated testing.

Note 4: When clocking cascaded packages in parallel, one should insure that: t_rCL ≤ 2 (t_{PD} - t_H) where: t_{PD} = the propagation delay of the driving stage and t_H = the hold time of the driven stage.

Block Diagram

cascading packages using DELAYED CLOCK (CL_D) output



TL/F/5962-4