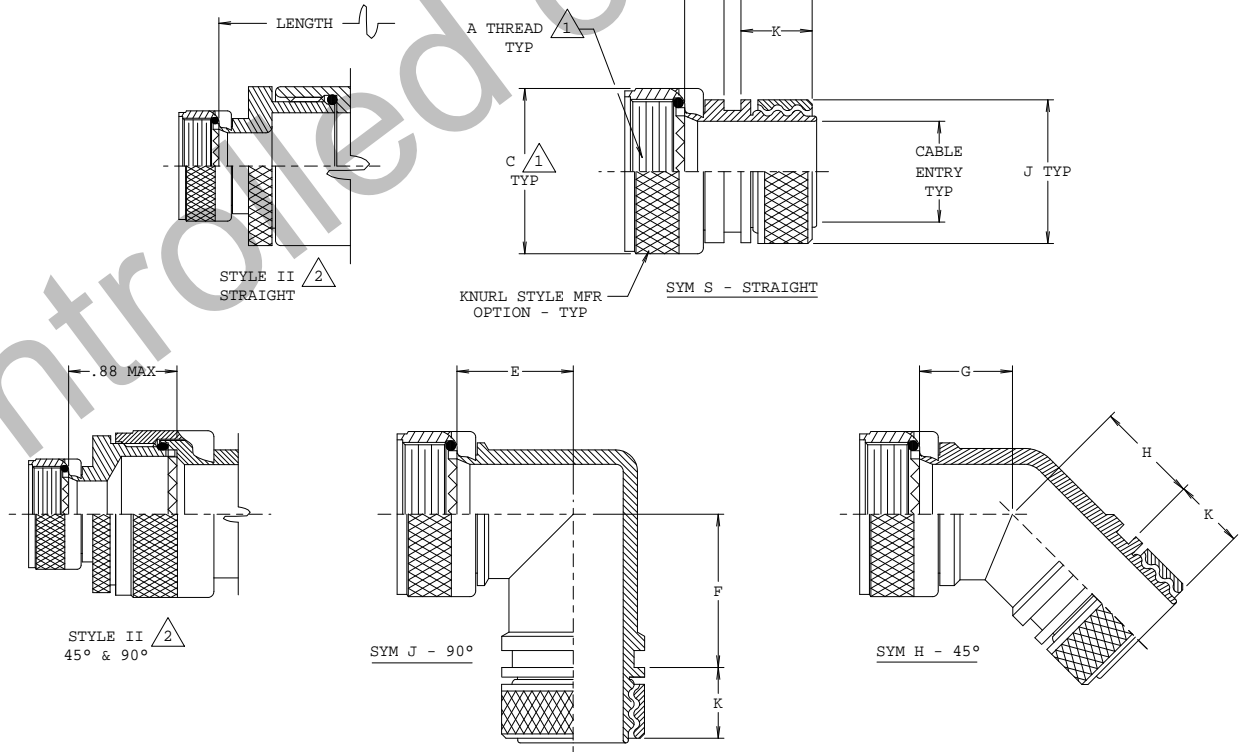
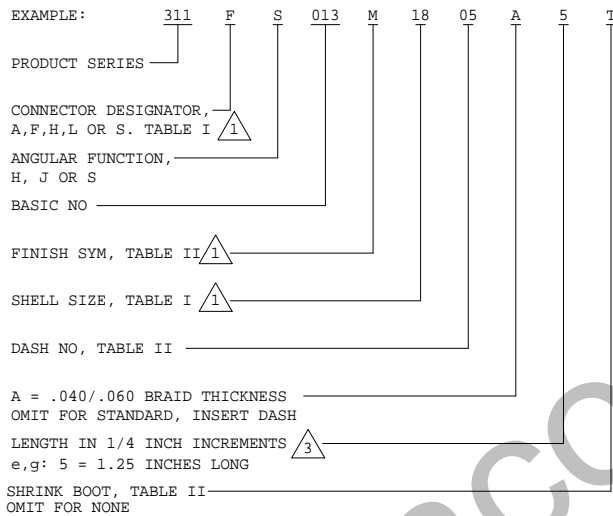


SHELL SIZE	E	F	G	H	MAX DASH NO (TABLE II)	
A, F, L, S	H	± .010	MAX	MAX	MAX	
08	09	.500	.852	.610	.830	03
10	11	.560	.905	.760	.980	04
12	13	.620	1.175	.760	.980	05
14	15	.670	1.205	.760	.980	07
16	17	.730	1.255	.860	.980	08
18	19	.775	1.255	.860	1.080	08
20	21	.840	1.255	.860	1.080	09
22	23	.925	1.280	.960	1.180	10
24	25	.955	1.380	.960	1.180	12
61		.985	1.406	.990	1.218	12

DASH NO	J MAX	K MAX	ENTRY MAX	SHINK BOOT
01	.410	.450	.118	770-003S111
02	.470	.450	.150	770-003S112
03	.590	.450	.225	770-001S103
04	.650	.450	.350	770-001S103
05	.830	.450	.470	770-001S103
06	.900	.656	.540	770-001S104
07	1.010	.656	.590	770-001S104
08	1.090	.656	.735	770-001S105
09	1.280	.656	.850	770-001S106
10	1.400	.656	.975	770-001S107
11	1.530	.656	1.080	770-001S107
12	1.630	.656	1.130	770-001S108
13	1.750	.656	1.265	770-001S108
14	1.900	.656	1.385	770-001S108
15	2.090	.656	1.515	770-001S108

SYM.	DESCRIPTION	DATE	APPROVED
A	RELEASED	03/10/89	T.L.
B	REVISED PER DCN 07956	03/24/89	H.T.
C	REVISED PER DCN 07972	03/30/89	H.T.
D	REVISED PER DCN 08251	08/25/89	V.N.
E	REVISED PER DCN 08642	04/25/90	V.N.
F	REVISED PER DCN 14236	10/26/98	T.L.
G	REVISED PER DCN 18115	07/19/01	T.L.
H	REVISED PER DCN 35175	03/18/10	T.L.
J	REVISED PER DCN 35624	03/18/10	N.D.
K	REVISED PER DCN 36174	08/10/10	SAC

PART NUMBER DEVELOPMENT



NOTES:

- SEE SHEET 2 (COMMON ACCESSORY INTERFACE DATA STD-001).
- WHEN DASH NO ORDERED, EXCEEDS MAX DASH NO (TABLE II) STYLE II WILL BE SUPPLIED.
- STANDARD MINIMUM ORDER LENGTH 1.25 (1.50 FOR CONNECTOR SYM "S") FOR SHORTER LENGTH CONSULT FACTORY (APPLIES TO SYM "S" ONLY).
- GLENAIR 600 SERIES BACKSHELL ASSEMBLY TOOLS ARE RECOMMENDED FOR ASSEMBLY AND INSTALLATION.
- FOR EFFECTIVE GROUNDING, CONNECTOR WITH CONDUCTIVE FINISH SHOULD BE USED.
- MATERIAL/FINISH:
ADAPTERS, ELBOWS, COUPLING & RFI NUTS - AL ALLOY/SEE TABLE II
O-RING - SILICONE/N.A.
SHRINK BOOT - ELASTOMERIC, OIL RESISTANT & FLAME RETARDANT.

UNLESS OTHERWISE SPECIFIED DIMENSIONS ARE IN INCHES TOLERANCES: FRACTIONS ± 1/16 DECIMALS .XX ± .03 .XXX ± .015 ANGLES ± 2°	DRAWN T.L.E	03/10/89	GLENAIR, INC. CAD 1989 [®] 1211 AIR WAY - GLENDALE - CALIFORNIA 91201
	CHECK G.BURGE	03/10/89	
	ENGR P.OAKES	03/10/89	
	 APPROVED		
DO NOT SCALE THIS DRAWING	RELEASE DATE 02/13/89	ORIGINAL RELEASE DATE	ADAPTER, RFI/EMI, PARALLEL TERMINATION, SHRINK BOOT
B/F 89-6298 P/C 31	NON REPARABLE COMMERCIAL ITEM	SCALE N/A	CODE IDENT. NO. 06324 SIZE C 311-013 REV. K SHEET 1 OF 2

THIS COPYRIGHTED DOCUMENT IS THE PROPERTY OF GLENAIR, INC. AND IS FURNISHED ON THE CONDITION THAT IT IS NOT TO BE DISCLOSED, REPRODUCED IN WHOLE OR IN PART, OR USED TO SOLICIT QUOTATIONS FROM COMPETITIVE SOURCES, OR USED FOR MANUFACTURE BY ANYONE OTHER THAN GLENAIR, INC. WITHOUT WRITTEN PERMISSION FROM GLENAIR, INC. THE INFORMATION HEREIN HAS BEEN DEVELOPED AT GLENAIR'S EXPENSE AND MAY BE USED FOR ENGINEERING EVALUATION AND INCORPORATION INTO TECHNICAL SPECIFICATIONS AND OTHER DOCUMENTS WHICH SPECIFY PROCUREMENT OF PRODUCTS FROM GLENAIR, INC.

REV.	DESCRIPTION	BY	DATE
SEE SHEET 1			

SYM	MATERIAL	FINISH DESCRIPTION
AB	NICKEL/ ALUMINUM/ BRONZE	DE-GREASE/NO PLATING
AL	ALUMIPLATE	
B	CADMIUM PLATE/OLIVE DRAB	
C*	ANODIZE/BLACK	
E	CHEM FILM PER MIL-DTL-5541 TYPE I, CLASS 3, ELECTRICALLY CONDUCTIVE, LIGHT GOLD COLOR	
G*	HARD COAT	
J	GOLD IRIDIUM OVER CADMIUM PLATE OVER NICKEL	
LF	CADMIUM PLATE, BRIGHT OVER ELECTROLESS NICKEL	
M	AL ALLOY	
N	CADMIUM PLATE/OLIVE DRAB OVER NICKEL	
NC	ZINC-COBALT ALLOY, OLIVE DRAB CHROMATE OVER ELECTROLESS NICKEL	
NF	CAD/O. D. OVER ELECTROLESS NICKEL (1000 HOUR SALT SPRAY)	
T	CADMIUM PLATE/BRIGHT DIP OVER NICKEL	
U	CADMIUM PLATE, BLACK	
UC	ZINC COBALT ALLOY/BLACK CHROMATE OVER ELECTROLESS NICKEL	
UF	CADMIUM PLATE/BLACK OVER ELECTROLESS NICKEL (1000-HOUR SALT SPRAY)	
UCR	ZINC COBALT/BLACK TRIVALENT CHROMATE OVER ELECTROLESS NICKEL	
Y	AL ALLOY	CAD/GOLD PER QQ-P-416F, TYPE II, CLASS 3
MS	SST	ELECTROLESS NICKEL
MT	AL ALLOY	NICKEL-PTE
Z1	300 SST	PASSIVATED
Z2	AL ALLOY	GOLD PLATE
Z17	300 SST	NICKEL PLATE PER QQ-N-290, CL.1
ZL	300 SST	NICKEL PLATE PER QQ-N-290, CL.2
ZM	300 SST	ELECTROLESS NICKEL
ZN	AL ALLOY	ZINC NICKEL/OLIVE DRAB OVER ELECTROLESS NICKEL (1000 HOUR SALT SPRAY)
ZNU	AL ALLOY	ZINC NICKEL/BLACK OVER ELECTROLESS NICKEL (1000 HOUR SALT SPRAY)
ZR	AL ALLOY	ZINC NICKEL/BLACK OVER E/N ROHS COMPLIANT, MATTE FINISH
ZU	300 SST	CADMIUM PLATE/BLACK
W	AL ALLOY	LEACHED IRIDIUM

*NON-CONDUCTIVE FINISH - NOT SUITABLE
FOR RF/EMI SHIELDING APPLICATIONS

TABLE II CONTINUE			
APPLY TO SST SELF-LOCKING ROTATABLE COUPLING			
SYM	MATERIAL	FINISH DESCRIPTION	COMPONENT
ZM	300 SST	ELECTROLESS NICKEL	ADAPTER, ELBOW, CLAMP & FERRULE
		PASSIVATED	NUT COUPLING
ZW	300 SST	CADMIUM O.D. OVER ELECTROLESS NICKEL	ADAPTER, ELBOW, CLAMP & FERRULE
		CADMIUM OLIVE DRAB	NUT COUPLING

THIS COPYRIGHTED DOCUMENT IS THE PROPERTY OF GLENAIR, INC. AND IS FURNISHED ON THE CONDITION THAT IT IS NOT TO BE DISCLOSED, REPRODUCED IN
WHOLE OR IN PART, OR USED TO SOLICIT QUOTATIONS FROM COMPETITIVE SOURCES, OR USED FOR MANUFACTURE BY ANYONE OTHER THAN GLENAIR, INC. WITHOUT
WRITTEN PERMISSION FROM GLENAIR, INC. THE INFORMATION HEREIN HAS BEEN DEVELOPED AT GLENAIR'S EXPENSE AND MAY BE USED FOR ENGINEERING
EVALUATION AND INCORPORATION INTO TECHNICAL SPECIFICATIONS AND OTHER DOCUMENTS WHICH SPECIFY PROCUREMENT OF PRODUCTS FROM GLENAIR, INC.

DRAWN	D.L.O	1/08/87	CAD 1987
CHECK	R. KEIM	1/08/87	
ENGR	M. LARJOS	1/08/87	
			
RELEASE DATE	1/09/87		
ORIGINAL DATE	4/21/80		
SCALE	N/A	WEIGHT	N/A
NON REPAIRABLE COMMERCIAL ITEM			
B/F	05-6279	P/C	N/A

GLENAIR, INC.
1211 AIR WAY - GLENDALE - CALIFORNIA 91201

COMMON ACCESSORY
INTERFACE DATA

CORE IDENT. NO. SIZE
06324 C STD-001

SCALE N/A WEIGHT N/A SHEET 2 OF 2

MOD CODE 349

REVISIONS		
SYM.	DESCRIPTION	DATE
A	RELEASED	04/28/98
		T.L.

MOD CODE 349 IS ADDED TO END OF PART NUMBER WHEN ASSEMBLY IS DESIRED IN NICKEL-ALUMINUM-BRONZE MATERIAL

UNLESS OTHERWISE SPECIFIED		DRAWN	T. LE	04/28/98	©	
DIMENSIONS ARE IN INCHES		CHECK	P. O.	04/28/98	CAD 1998	
TOLERANCES:		ENGR	P. OAKES	04/28/98	1211 AIR WAY GLENDALE, CALIF. 91201	
FRACTIONS	+ 1/16	MOD CODE 349 CODE IDENT. NO. 06324 SCALE N/A WEIGHT N/A SHEET 1 OF 1				
DECIMALS	.XX +.03 .XXX +.015					
ANGLES	+ 2°					
DO NOT SCALE THIS DRAWING		APPROVED		REV. A		
P/C	N/A	B/F	N/A	RELEASE DATE	04/28/98	
				ORIGINAL RELEASE DATE		