




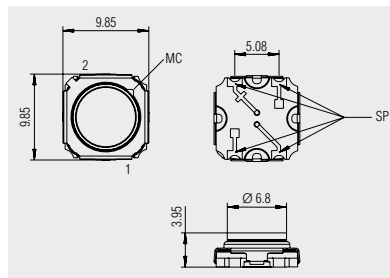
SERIES 3006 - TACT SWITCHES

TO 50 mA 28 V

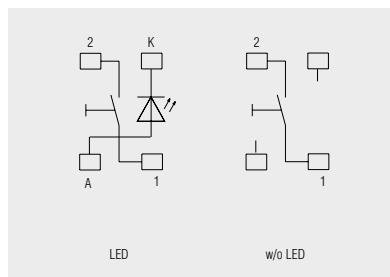
 single-pole	max 1 Watt	Contact material	Operating force (N)	Operating position (OP) (mm)	Free position (FP) max. (mm)	Permissible total travel position (TP) (mm)	Color lamp	Miscellaneous	Stock version
Normally open contact (SPNO)									
3006.2100	○	Au	4 +1 -0.5	3.2 ±0.2	4.15	2.9		without LED	
3006.2101	○	Au	4 +1 -0.5	3.2 ±0.2	4.15	2.9	Yellow		
3006.2102	○	Au	4 +1 -0.5	3.2 ±0.2	4.15	2.9	Red		
3006.2104	○	Au	4 +1 -0.5	3.2 ±0.2	4.15	2.9	Blue		
3006.2105	○	Au	4 +1 -0.5	3.2 ±0.2	4.15	2.9	Orange		
3006.2106	○	Au	4 +1 -0.5	3.2 ±0.2	4.15	2.9	White	LED white	
3006.2107	○	Au	4 +1 -0.5	3.2 ±0.2	4.15	2.9	Green		
3006.2151	○	Au	4 +1 -0.5	3.2 ±0.2	4.15	2.9	Yellow	low current consumption reduced brightness	
3006.2300	○	Au	6 +1.5 -0.75	3.2 ±0.2	4.15	2.9		without LED	
3006.2301	○	Au	6 +1.5 -0.75	3.2 ±0.2	4.15	2.9	Yellow		
3006.2306	○	Au	6 +1.5 -0.75	3.2 ±0.2	4.15	2.9		LED white	



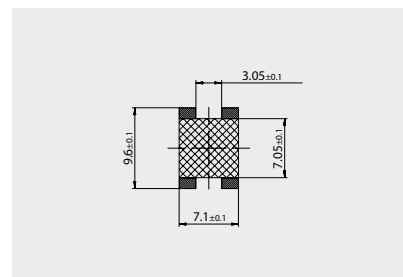
Basic type 3006



SMD connection technique



Circuit diagram with / without LED



Solder pad design

ROCKERSWITCHES
 PUSHBUTTON SWITCHES
 TOGGLE SWITCHES
 SLIDE SWITCHES
 ROTARY SWITCHES
 FOOT SWITCHES
TACT AND KEY SWITCHES
 SNAP-ACTION SWITCHES
 MICRO-SIGNAL SWITCHES
 SENSORS
 ECO
 PUSH'DRIVE



SERIES 6425 - KEY SWITCHES

TO 100 mA 28 V



PRODUCT FEATURES

- Single-pole normally open contact with and without LEDs
- Pleasant actuating characteristic and low actuation noise
- Low bounce time
- Standard with gold plated contacts
- Wide range of key caps for different design requirements

ON REQUEST

- Customized key caps
- Other key cap colors
- Other LED colors
- Bicolor LED

Contact resistance (new condition)	< 250 mOhm
Insulation resistance (new condition)	> 100 MOhm
Bounce time	< 5 ms
Contact distance	< 3 mm
Ambient temperature	-20 °C ... +70 °C
Contact material	Au
Material actuator housing terminals	POM PBTP tinned
Terminal type	PCB terminal
Mechanical life endurance	1E6 at 10 mA 12 V
Flammability	UL 94 HB
Miscellaneous	The key base of the standard key can be snapped into a 1.2 mm thick frame with a cut-out of 13.55 x 13.55 mm. A current limiting to max. 20 mA must be provided for the integrated LED!

ROCKER SWITCHES
PUSHBUTTON SWITCHES
TOGGLE SWITCHES
SLIDE SWITCHES
ROTARY SWITCHES
FOOT SWITCHES
TACT AND KEY SWITCHES
SMAP-ACTION SWITCHES
MICRO-SIGNAL SWITCHES
SENSORS
ECO
PUSH N' DRIVE



SERIES 6425 - KEY SWITCHES

TO 100 mA 28 V

	100 mA 28 V	Color lamp	Pitch (mm)	Operating force (N)	Total travel / stroke (mm)	Miscellaneous	Stock version
Normally open contact (SPNO)							
6425.0101	○		> 16	0.7	1.4 ± 0.2	customer LED assembly possible	○
6425.1101	○		> 16	0.7	1.4 ± 0.2	narrow base for parallel guide	○
6425.3111	○		19	0.7	1.4 ± 0.2		○
6425.3121	○		19	0.7	1.4 ± 0.2		
6425.3131	○		19	0.7	1.4 ± 0.2		○
6425.4111	○		16	0.7	1.4 ± 0.2		○
6425.4121	○		16	0.7	1.4 ± 0.2		○
6425.4131	○		16	0.7	1.4 ± 0.2		○
6425.5111	○		16 + 19	0.7	1.4 ± 0.2	LED lower for button 834 900 ... and 835 900 ...	○
6425.5131	○		16 + 19	0.7	1.4 ± 0.2	LED lower for button 834 900 ... and 835 900 ...	○
6425.6111	○		> 15	0.7	1.4 ± 0.2	LED higher for key cap 827 ... 011	
6425.6131	○		> 15	0.7	1.4 ± 0.2	LED higher for key cap 827 ... 011	

Basic type 6425

Without LED or customer LED assembly

With LED

With LED for design key caps

For multiple key caps with parallel guide