

TWINAX SERIES

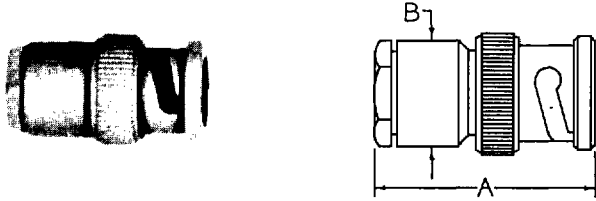
The twinax series was developed to fit twin conductor balanced line cables incorporating a braid. There are two series being presented. The first is the BNC size which features a female and male contact spaced .125 apart in each connector. The insulator has a slab cut to properly align the contacts for mating. The series is mainly used on RG108 A/U 78 ohm cable.

The other series presented is called a keyed 90° connector. The contacts are spaced .250 apart and the jacks have two female contacts and the plugs two male contacts. Proper mating is accomplished by using a key in the jacks and a slot in the plug body. The key is 90° to center line of the contacts. The series is used extensively with RG22/U 95 ohm cable.

MATERIALS:	Brass per QQ-B-626 composition 22½ HD. Beryllium copper per QQ-C-530 heat treated to condition HT. Teflon per L-P-503 Rubber per ZZ-R-765
FINISHES:	Silver plating per QQ-S-365 Gold plating per MIL-G-45204 Proprietary bright nickel (IP23)
ELECTRICAL:	Impedance: 78 Ohms for BNC Twinax 95 Ohms for keyed 90° Insulation Resistance: 5000 Megohms Voltage Rating: 250 volts for BNC Twinax 500 volts for keyed 90°
ENVIRONMENTAL:	Salt spray per MIL-STD-202 (Method 101) Moisture resistance per MIL-STD-202 (Method 106)

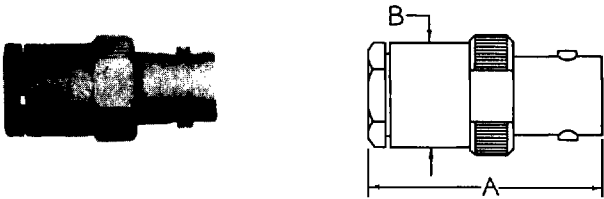
TWINAX SERIES

BNC TWINAX CABLE PLUG



S/C Part No.	Cable	Dimension		Engr. Data
		A	B	
21P101-6	RG108/U	1-3/64	1/2	Straight Cut Style
21P103-4	Belden 9463	1-3/64	1/2	Straight Cut Style
21P104-1	Tensolite 1936TX10C25W	1-3/64	1/2	Straight Cut Style
21P110-1	RG108/U	1-3/64	1/2	V Groove Style Clamping

BNC TWINAX CABLE JACK



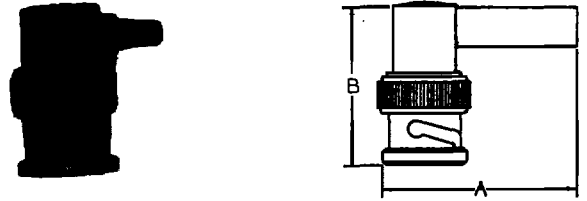
S/C Part No.	Cable	Dimension		Engr. Data
		A	B	
21J100-1	Manhattan M1232	1-1/8	1/2	Straight Cut Style

BNC TWINAX CABLE JACK — SINGLE HOLE MOUNT



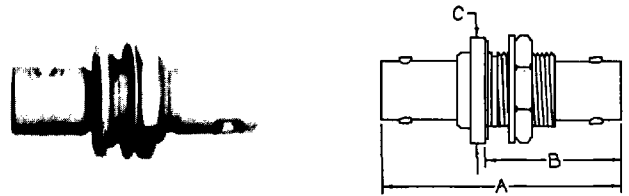
S/C Part No.	Cable	Dimension			Mtg. Hole	Engr. Data
		A	B	C		
21JS100-2	RG-108A/U	1-1/8	13/16	11/16 HEX	D4	V Groove Clamping
21JS103-1	RG-108A/U	1-15/32	3/4	5/8	D4	Isolated Ground
21JS104-1	RG-108A/U	1-1/8	13/16	11/16 HEX	D4	Straight Cut Style

BNC TWINAX CABLE PLUG — RIGHT ANGLE — CRIMP ON STYLE



S/C Part No.	Cable	Dimension		Crimp Tool	Engr. Data
		A	B		
21P107-1	TWC78-1	1-3/32	57/64	.178 HEX	

BNC TWINAX ADAPTER — JACK TO JACK — SINGLE HOLE MOUNT



S/C Part No.	Dimension			Mtg. Hole	Engr. Data
	A	B	C		
21AS101-1	1-3/8	55/64	5/8 HEX	C9	
21AS102-1	1-3/8	55/64	5/8 HEX	C9	Isolated Ground

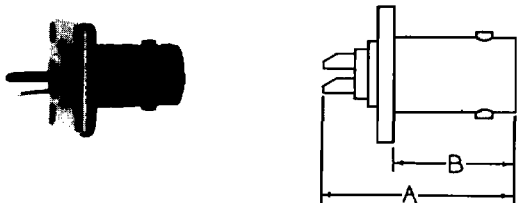
BNC TWINAX JACK RECEPTACLE — SINGLE HOLE MOUNT



S/C Part No.	Dimension		Mtg. Hole	Engr. Data
	A	B		
21JR101-2	1-1/16	15/32	D8	

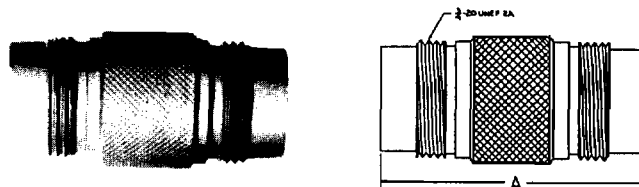
TWINAX SERIES

BNC TWINAX JACK RECEPTACLE — FLANGE MOUNT



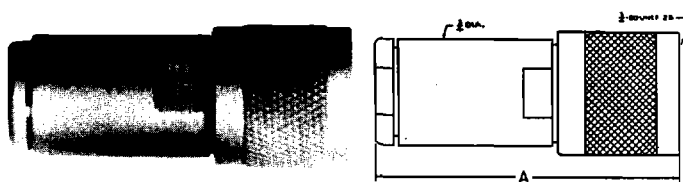
S/C Part No.	Dimension		Mtg. Plate	Engr. Data
	A	B		
21JR107-1	1-1/16	5/8	3A	

TWINAX ADAPTER — JACK TO JACK — KEYED 90°



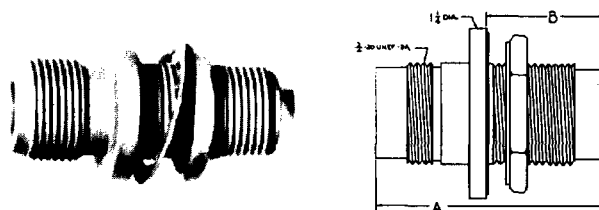
S/C Part No.	Dimension		Engr. Data
	A		
21A100-1	1-43/64		

TWINAX CABLE PLUG — KEYED 90°



S/C Part No.	Cable	Dimension	Engr. Data
		A	
21P114-1	Belden 8227 IBM 7362211 Belden 9207	1-27/32	

TWINAX ADAPTER — JACK TO JACK — SINGLE HOLE MOUNT — KEYED 90°



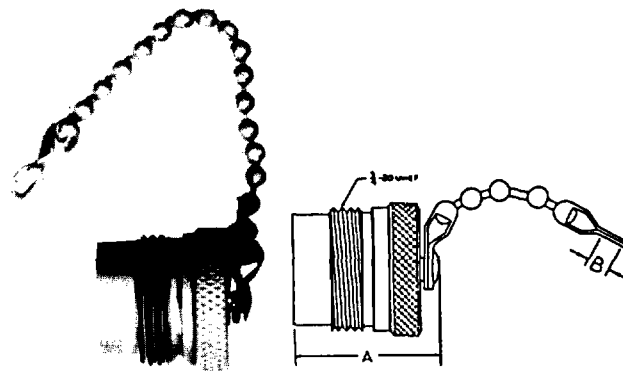
S/C Part No.	Dimension		Mtg. Hole	Engr. Data
	A	B		
21AS103-1	1-43/64	7/8	D2	

TWINAX CABLE JACK — KEYED 90°



S/C Part No.	Cable	Dimension	Engr. Data
		A	
21J101-1	RG-22/U	1-21/32	

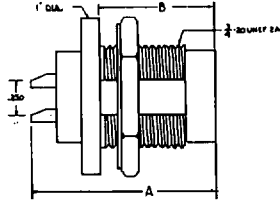
TWINAX JACK — CAP AND CHAIN — KEYED 90°



S/C Part No.	Dimension		Engr. Data
	A	B	
21JC100-2	27/32	.144	3-1/2" Bead Chain

TWINAX SERIES

TWINAX JACK RECEPTACLE — SINGLE HOLE MOUNT — KEYED 90°



S/C Part No.	Dimension		Mtg. Hole	Engr. Data
	A	B		
21JR110-1	1-1/2	53/64	D2	