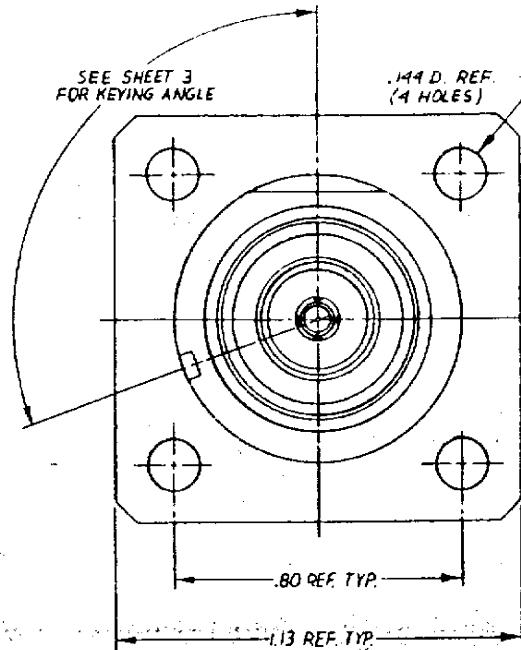
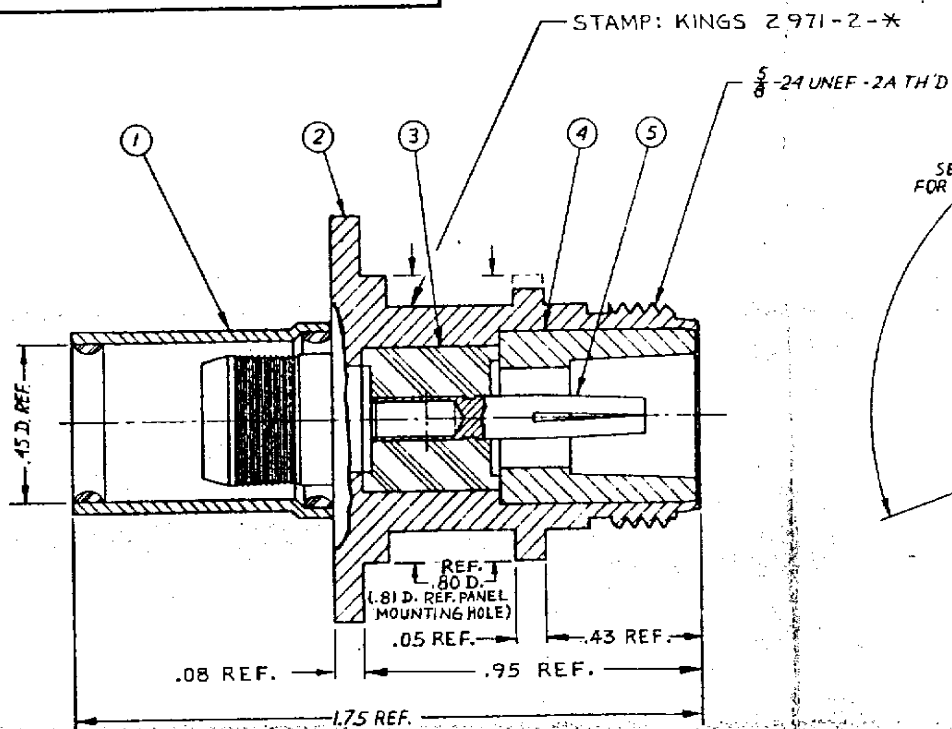


DASH NO	M CODE	MADE FROM
---------	--------	-----------



2971-2-*
(SHEET 1 OF 3)
S-D

REVISIONS	
ISSUE	DATE
0	ER 30585 KH 11MAR89
1	CN 31068 C KH 10 AUG 89

S-D

NOTES:

1. FOR USE WITH RG-393/U CABLE GROUP.
2. FOR CABLING INSTRUCTIONS SEE CP-5450.
3. FOR CABLE TRIMMING USE KTJ-224 & KTD-268.
4. FOR CRIMPING USE DIE SIZE 105.
5. ITEM ⑤ TO BE SUPPLIED UNASSEMBLED.
6. ITEMS ①, ② & ④ TO HAVE KINGS TARNISH RESISTANT FINISH (TR-5)
7. FOR USE WITH .075 MAX PANEL.
8. INTERFACE PER MIL-STD-348, FIG. 304-2.
9. MARK PACKAGE: KINGS 2971-2-*
XXXX (DATE CODE)

UNLESS OTHERWISE SPECIFIED

- 1 TOLERANCES FRACTIONS & 2 PLACE DECIMALS ± .010
- 3 PLACE DECIMALS ± .004
- ANGLES ± 0°30'
- 1.1 R. CONCENTRICITY OF ANY 2 DIAMETERS MAY
- BE EXCEEDED BY THE SUM OF THEIR TOLERANCES

- 2 REMOVE ALL BURRS, BREAK SHARP EDGES .005 MAX
- 3 NO FILLETS PERMITTED
- 4 SURFACE ROUGHNESS 63 MICROINCHES RMS MAX
- 5 ALL DIMENSIONS PRIOR TO PLATING
- 6 ALL PLATING IN ACCORDANCE WITH KER 10004

3:1	
APPROVED FOR RELEASE	
WAS: E-15551A-D	
DESIGN	
REV	
N PANEL JACK KEYED	
DRW: KH	DATE: 11MAR89
APP: JT	DATE: 6MAR89
APP: J	DATE: 10AUG89
2971-2-* (SHEET 1 OF 3)	

DASH NO.	M-CODE	MADE FROM
----------	--------	-----------

KINGS PART NO.	KEYING ANGLE
2971-2-1	42°
2971-2-2	54°
2971-2-3	66°
2971-2-4	78°
2971-2-5	90°
2971-2-6	102°
2971-2-7	114°
2971-2-8	126°
2971-2-9	138°
2971-2-10	150°
2971-2-11	162°
2971-2-12	174°
2971-2-13	186°
2971-2-14	198°
2971-2-15	210°
2971-2-16	222°
2971-2-17	234°
2971-2-18	246°
2971-2-19	258°
2971-2-20	270°
2971-2-21	282°
2971-2-22	294°
2971-2-23	306°
2971-2-24	318°

2971-2-*
(SHEET 3 OF 3)

REVISIONS

ISSUE	CHANGES
0	ER 30585 KH 1MAR89
1	CN 31068 C KH 10 AUG 89

S-D

SCALE

APPROX. SURFACE AREA

USED ON

REF

PART NO. & ANGLE TABLE

DRAWN	PS	DATE	1MAR89
APPR	KH	DATE	2MAR89
APPR	JT	DATE	6MAR89

KINGS
ELECTRONICS CO. INC.
RADIATOR NEW YORK 10007

2971-2-*
(SHEET 3 OF 3)

UNLESS OTHERWISE SPECIFIED:

1. TOLERANCES: FRACTIONS & 2 PLACE DECIMALS ± 0.10
3 PLACE DECIMALS ± 0.04 ANGLES ± 0°30'
2. T 1 R CONCENTRICITY OF ANY 2 DIAMETERS MAY NOT EXCEED HALF THE SUM OF THEIR TOLERANCES

3. REMOVE ALL BURRS, BREAK SHARP EDGES .005 MAX.
4. NO FILLETS PERMITTED.
5. SURFACE ROUGHNESS 63 MICROINCHES RMS MAX.
6. ALL DIMENSIONS PRIOR TO PLATING
7. ALL PLATING IN ACCORDANCE WITH KER 10004