

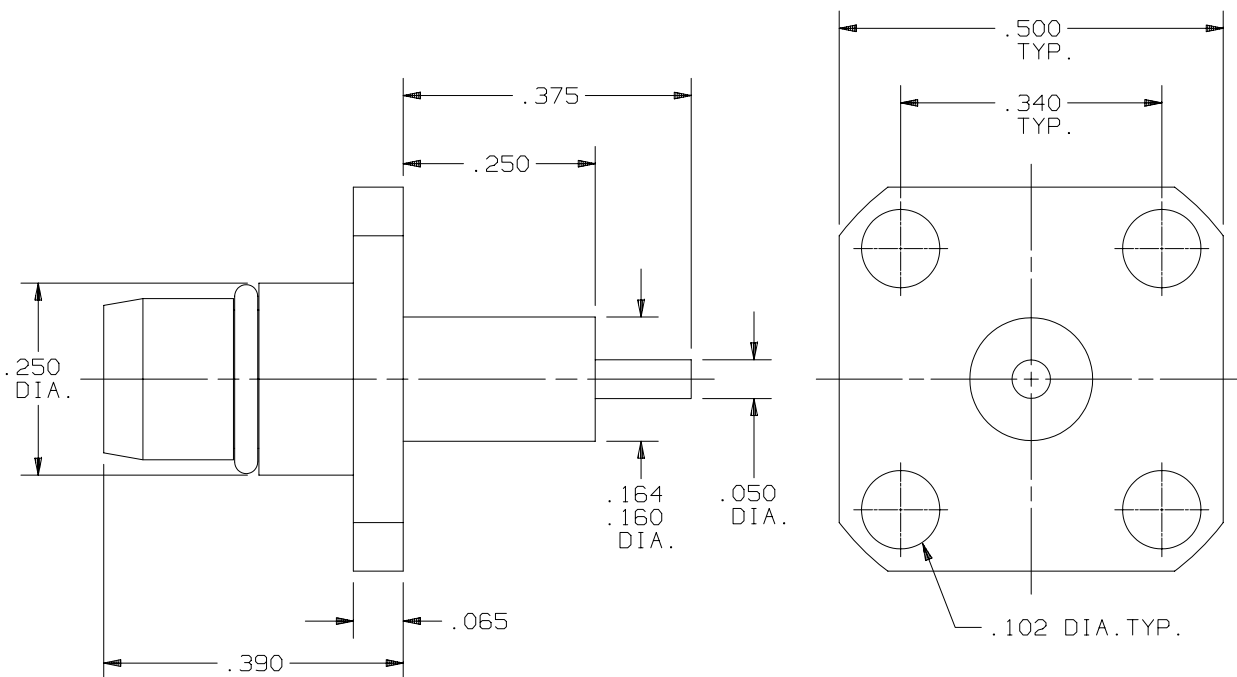
PRODUCT DATA DRAWING

CAD
GENERATED
DRAWING

DCN
CONTROLLED
DOCUMENT

DWG. NO.

SF1755-6106



MATERIAL:

BODY: STAINLESS STEEL PER AMS-5640,
UNS 30300, TYPE 1.

CONTACT: BERYLLIUM COPPER PER
ASTM-B196, COND. TD04,
ALLOY UNS C17300.

INSULATOR: TEFLON PER ASTM-D-1457.

O-RING: FLUOROCARBON RUBBER PER
MIL-R-83248B, TYPE I, CLASS 1

FINISHES:

BODY: PASSIVATE PER QQ-P-35C

CONTACT: GOLD PER MIL-G-45204 TYPE 0,
GRADE C, CLASS 2 OVER
NICKEL PER QQ-N-290 CLASS 2.

ELECTRICAL:

IMPEDANCE: 50 OHMS
FREQ. RANGE: DC TO 22 GHz
INSUL. RES.: 5,000 MEGOHMS MIN.
D.W.V.: 1,500 VRMS

SYM.	DESCRIPTION	DATE	APPR.	UNLESS OTHERWISE SPECIFIED:			DIMENSIONS ARE IN INCHES			<i>SV Microwave, Inc.</i> 3301 Electronics Way West Palm Beach, FL, 33407
-	REL. NRN 25812	1/00	SW	1) ALL DIMENSIONS ARE AFTER PLATING. 2) BREAK CORNERS & EDGES .005 R. MAX. 3) CHAM. 1st & LAST THDS. 4) SURFACE ROUGHNESS 63 / MIL-STD-10. 5) DIAS. ON COMMON CENTERS TO BE CONCENTRIC WITHIN .005 T.I.R. 6) REMOVE ALL BURRS.			TOLERANCES: DECIMALS FRACTIONAL ANGULAR .X ±.030 ±1/64 X° ±1°0' .XX ±.015 X°X' ±15' .XXX ±.005			
				DRAWN: VMJ 1/07/00			MATERIAL: PER BOM			BMA PLUG, FLANGE MOUNT
				CHECKED: SW 1/11/00			FINISH: PER BOM		AREA: N/A	
				APPROVED: SW 1/11/00			SIZE	CAGE NO.	SCALE	
							A	95077	4X	DWG. NO. SF1755-6106