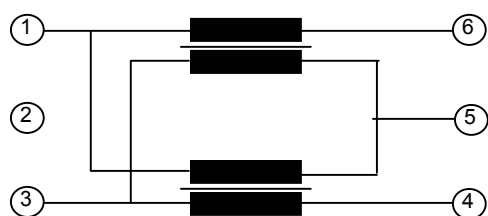


**Application hint:**

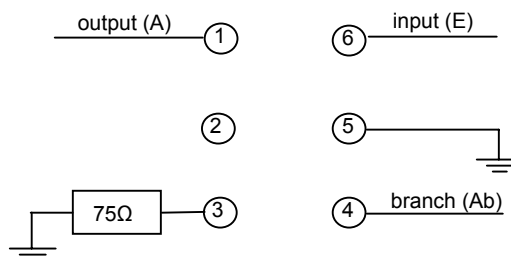
For better return loss at the couped port and a constant value of coupling attenuation set a open stup in parallel to 75Ω resistor.

**Circuit diagram of directional coupler:**

**Test arrangement for directional coupler:**

Measurement instrument: Network Analyser

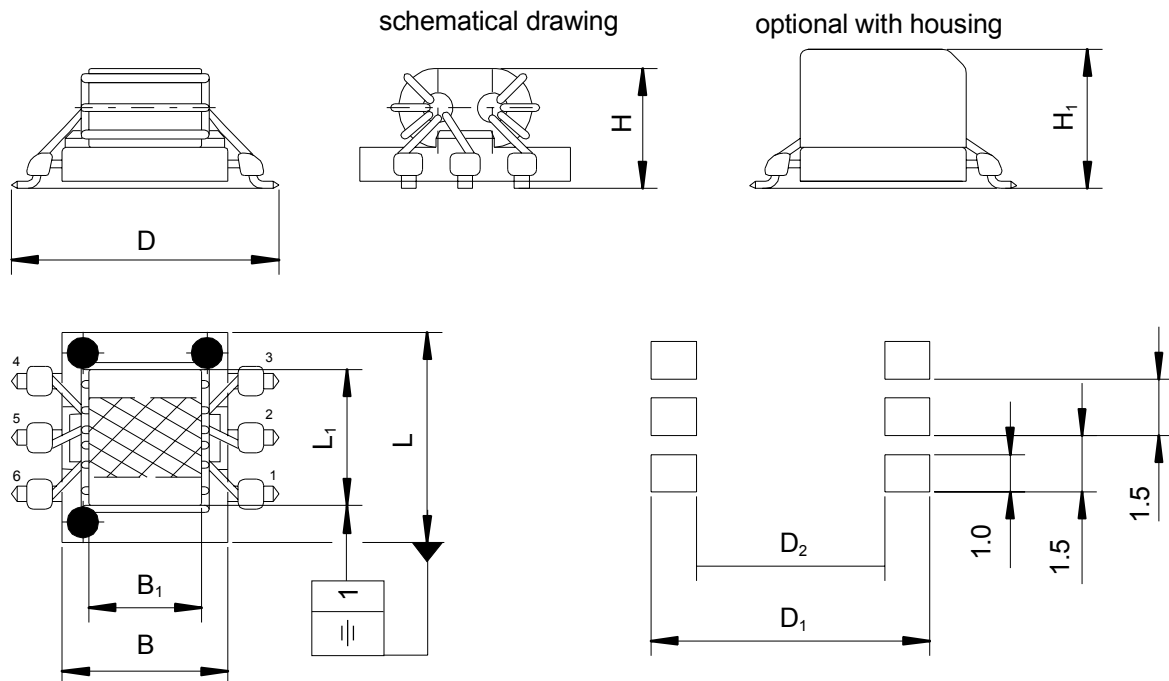
Test platina: RK751

Impedance: 75 Ω


**Typical attenuation values:**

Measurement according the above shown measurement circuit  
(values can be specified after evaluation of the first series)

Insertion Losses (dB)	(f / MHz)			
	47	862	2000	2500
E/A	0.7 ± 0.3	0.7 ± 0.3	1 ± 0.5	< 1.8
E/Ab	15.5 ± 0.3	15.2 ± 0.5	15 ± 1.2	< 17

**Dimension and Layout:**

**Dimensions (mm):**

L	L <sub>1</sub>	B	B <sub>1</sub>	H	H <sub>1</sub>	D	D <sub>2</sub>	D <sub>1</sub>
5,6 <sub>-0,1</sub>	3,6	4,5 <sub>-0,1</sub>	2,5 <sup>1)</sup>	3,4 <sup>1)</sup>	3,9 <sup>1)</sup>	6,9 <sup>1)</sup>	5,1	7,1 <sup>1)</sup>

<sup>1)</sup> max. dimensions

**Without housing**
**Packing:**

Packaging unit: 2.100 pieces/reell

Packaging into blister tape acc. DIN IEC 286-3

blister tape 12 mm on reel 330 mm

**Coplanarity < 0,2mm**

© EPCOS AG 2003. Reproduction, publication and dissemination of this data sheet, enclosures hereto and the information contained therein without EPCOS' prior express consent is prohibited.

Purchase orders are subject to the General Conditions for the Supply of Products and Services of the Electrical and Electronics Industry recommended by the ZVEI (German Electrical and Electronic Manufacturers' Association), unless otherwise agreed.