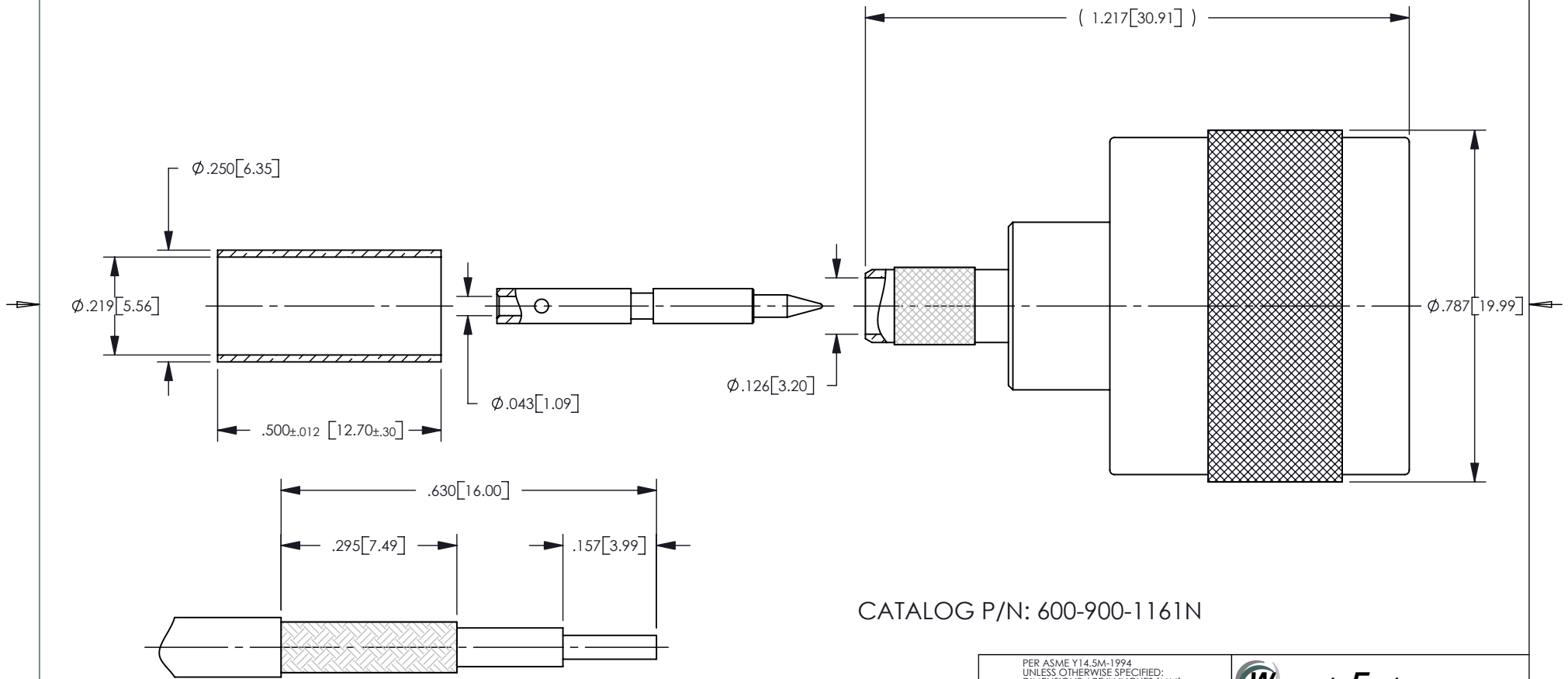


NOTES: UNLESS OTHERWISE SPECIFIED

1. MATERIAL SPECIFICATIONS:
 GASKET: SILICONE RUBBER
 ALL METAL PARTS: BRASS
 INSULATOR: TEFLON
2. FINISH SPECIFICATIONS:
 CENTER CONTACT: GOLD PLATE OVER NICKEL
 ALL OTHER METAL PARTS: NICKEL PLATE
3. FOR USE WITH RG-142 CABLE OR EQUIVALENT.
4. FOR CABLING PROCEDURES, USE CAP CM-03 WITH TRIMMING DIMENSIONS SHOWN.
5. CRIMP FERRULE TO .213 HEX.

| REV | DESCRIPTION | BY DATE | APPD |
|-----|-------------|-----------------|------|
| 01 | EW06-495 | PSM 10/10/06 | XXX |



CABLE TRIMMING DIMENSIONS

CATALOG P/N: 600-900-1161N

| | | | | | |
|---|----------|----------|----------------------|---|-----------------|
| PER ASME Y14.5M-1994 UNLESS OTHERWISE SPECIFIED: DIMENSIONS ARE IN INCHES [MM] TOLERANCES: DECIMAL: .XX [X.X] $\pm .01$ [0.3] .XXX [X.XX] $\pm .005$ [0.13] .XXXX [X.XXX] $\pm .XXXX$ ANGLES: $\pm 2^\circ$ SCALE: 3:1 | | | | Winchester Electronics Corporation 62 Barnes Industrial Road North Wallingford, Connecticut 06492 | |
| CUSTOMER DRAWING | | | TYPE N STRAIGHT PLUG | | |
| DRAWN | DATE | APPROVED | DATE | A | SD600-900-1161N |
| PSM | 10/10/06 | XXX | XX/XX/XX | | |
| APPROVED | DATE | APPROVED | DATE | SHT 1 OF 1 | REV 01 |
| XXX | XX/XX/XX | XXX | XX/XX/XX | | |