

# PL EX 250 REC 18-12AWG PTBR FLAG ✓ ACTIVE

[Positive Lock](#) | [Positive Lock 250](#)

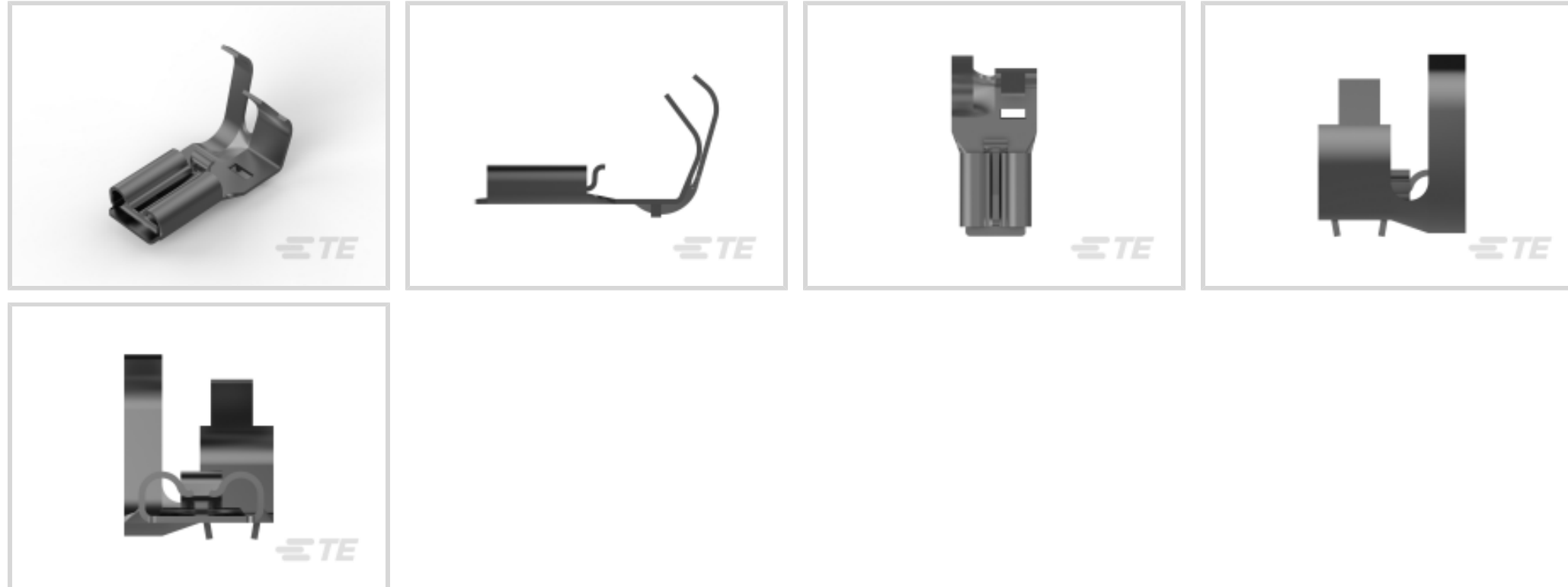
TE Part # 175057-1

TE Internal #: 175057-1

[View on TE.com >](#)



Terminals & Splices > Quick Disconnects



Terminal & Splice Type: **Receptacle**

Wire Size: .82 – 3.31 mm<sup>2</sup>

Mating Tab Width: 6.35 mm [ .25 in ]

Mating Tab Thickness: .81 mm [ .032 in ]

## Features

### Product Type Features

Wire Stop	No
Wire/Cable Type	Regular Wire
Terminates To	Wire & Cable
Insertion Force	Low
Sealable	No
Insulated	No

### Configuration Features

Connection Capacity	Single
---------------------	--------

### Electrical Characteristics

Voltage (Max)	250 V
---------------	-------

### Body Features

Fully Insulated	No
Plating Material	Pre-Tin

### Contact Features

Terminal Type	Receptacle
---------------	------------



Terminal & Splice Type	Receptacle
Terminal Orientation	Flag
Contact Base Material	Brass
Crimp Type	F-Crimp
Barrel Type	Open

**Mechanical Attachment**

Wire Insulation Support	With
-------------------------	------

**Dimensions**

Accepts Wire Insulation Diameter Range	2.8 – 4.1 mm [.11 – .161 in]
Overall Length	19.3 mm [.759 in]
Receptacle Terminal Stock Thickness	.41 mm [.016 in]
Wire Size	.82 – 3.31 mm <sup>2</sup>
Mating Tab Width	6.35 mm [.25 in]
Mating Tab Thickness	.81 mm [.032 in]

**Usage Conditions**

Operating Temperature Range	-40 – 110 °C [-40 – 230 °F]
-----------------------------	-----------------------------

**Packaging Features**

Packaging Quantity	3000
Packaging Method	Strip/Reel

**Product Compliance**

[For compliance documentation, visit the product page on TE.com>](#)

EU RoHS Directive 2011/65/EU	Compliant
EU ELV Directive 2000/53/EC	Compliant
China RoHS 2 Directive MIIT Order No 32, 2016	No Restricted Materials Above Threshold
EU REACH Regulation (EC) No. 1907/2006	Current ECHA Candidate List: JAN 2019 (197) Candidate List Declared Against: JAN 2019 (197)
Halogen Content	Low Halogen - Br, Cl, F, I < 900 ppm per homogenous material. Also BFR/CFR/PVC Free
Solder Process Capability	Not applicable for solder process capability

Product Compliance Disclaimer



This information is provided based on reasonable inquiry of our suppliers and represents our current actual knowledge based on the information they provided. This information is subject to change. The part numbers that TE has identified as EU RoHS compliant have a maximum concentration of 0.1% by weight in homogenous materials for lead, hexavalent chromium, mercury, PBB, PBDE, DBP, BBP, DEHP, DIBP, and 0.01% for cadmium, or qualify for an exemption to these limits as defined in the Annexes of Directive 2011/65/EU (RoHS2). Finished electrical and electronic equipment products will be CE marked as required by Directive 2011/65/EU. Components may not be CE marked. Additionally, the part numbers that TE has identified as EU ELV compliant have a maximum concentration of 0.1% by weight in homogenous materials for lead, hexavalent chromium, and mercury, and 0.01% for cadmium, or qualify for an exemption to these limits as defined in the Annexes of Directive 2000/53/EC (ELV). Regarding the REACH Regulations, TE's information on SVHC in articles for this part number is still based on the European Chemical Agency (ECHA) 'Guidance on requirements for substances in articles' (Version: 2, April 2011), applying the 0.1% weight on weight concentration threshold at the finished product level. TE is aware of the European Court of Justice ruling of September 10th, 2015 also known as O5A (Once An Article Always An Article) stating that, in case of 'complex object', the threshold for a SVHC must be applied to both the product as a whole and simultaneously to each of the articles forming part of its composition. TE has evaluated this ruling based on the new ECHA "Guidance on requirements for substances in articles" (June 2017, version 4.0) and will be updating its statements accordingly.

### Compatible Parts



TE Part # 1717268-1  
PL EX 250 INSULATED  
FLAG REC PVC V-0



TE Part # 1717268-2  
PL EX 250 INSULATED  
FLAG REC PVC V-0

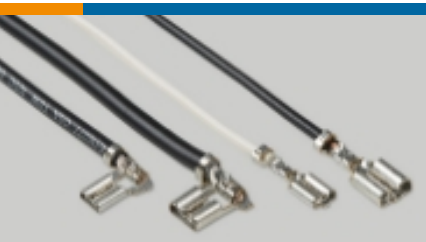
### Also in the Series | Positive Lock 250



Crimp Terminal Housings  
(190)



Insulation Boots & Sleeves  
(6)



Quick Disconnects(180)

### Customers Also Bought



TE Part #179464-1  
POWER DBL LOCK CAP  
HSG F/H 3P



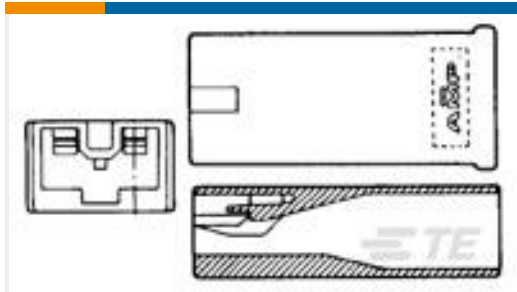
TE Part #173974-1  
PL MKII 187 REC HSG 1P  
NYLON NAT



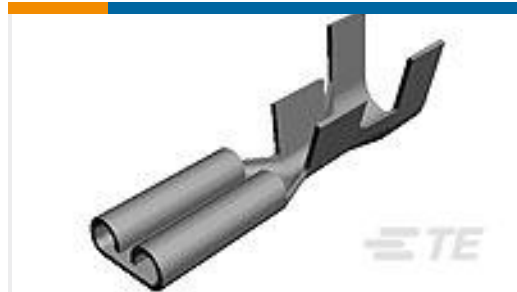
TE Part #177915-2  
AMP POWER DBL LOCK  
REC



TE Part #175019-1  
PL EX MKII 187 REC 22-  
16AWG PTBR



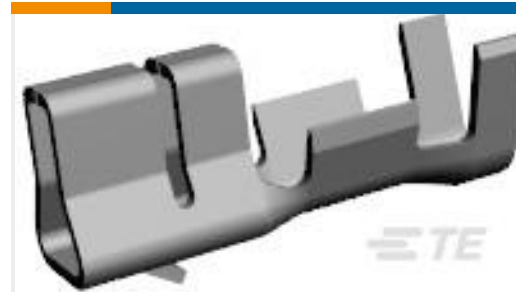
TE Part #179970-1  
PL EXII 250 REC HSG 1P  
NYLON NAT



TE Part #170213-2  
FASTON 250 REC 18-14  
0.44 X 50.29 TPBR



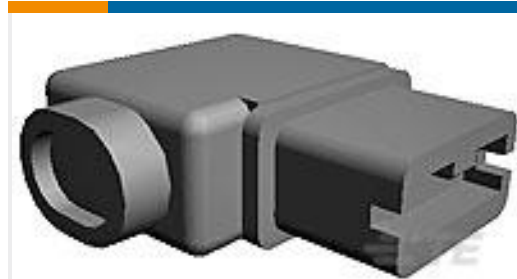
TE Part #175022-1  
PL EX MKII 250 REC 18-  
14AWG PTBR



TE Part #917684-1  
2.5 SIGNAL DBL LOCK  
REC CONT M



TE Part #1-178708-1  
PL EX SLEEVE 187 FLAG  
NATURAL 6/6 NYLON



TE Part #1-176497-1  
PL EX 250 REC HSG 1P  
NYLON NAT

## Documents

### Product Drawings

[PL EX 250 REC 18-12AWG PTBR FLAG](#)

English

### CAD Files

[3D PDF](#)

3D

Customer View Model

[ENG\\_CVM\\_CVM\\_175057-1\\_L1.2d\\_dxf.zip](#)

English

Customer View Model

[ENG\\_CVM\\_CVM\\_175057-1\\_L1.3d\\_igs.zip](#)

English

Customer View Model

[ENG\\_CVM\\_CVM\\_175057-1\\_L1.3d\\_stp.zip](#)

English

### Product Specifications

[Application Specification](#)

English

### Product Environmental Compliance

[MD\\_175057-1\\_11162018854\\_dmtec](#)

English

[MD\\_175057-1\\_11162018854\\_dmtec](#)

English

### Instruction Sheets



[Instruction Sheet \(non U.S.\)](#)

English

[POSITIVE LOCK EX CONTACT](#)

English

---

[Agency Approvals](#)

[Agency Approval Document](#)

English